



JCR

UNIVERSE



ARTIFACTS
CATALOGUE



JCP UNIVERSE IS AN ECLECTIC BRAND
THAT AIMS TO CHANGE THE DESIGN
STATUS QUO IN A REVOLUTIONARY
WAY. BRAINCHILD OF A RADICAL
THINK TANK HELD IN MILAN IN
2015, JCP WAS CONCEIVED BY
ARCHITECT LIVIO BALLABIO AND IS
ORCHESTRATED BY CTRLZAK STUDIO.
A FUSION BETWEEN ART AND DESIGN,
THE BRAND'S CREATIONS BLEND
CLASSIC AND CONTEMPORARY STYLE
IN A SURPRISING NEW IDIOM THAT
DEFIES THE NORMS.

"Kusa no hana
Yes I said yes I will Yes
Get hard as marble"



ABORAM

vases



From a geometric sharply cut block of exquisite stone comes out an elegant metal container, as an arm inviting the user to display flowers, keys and daily bibelots or even a champagne bottle to be shared with loved friends.

Aboram pieces are about re-investing the power of ornamental pieces, standing at home in between sculptures and functional elements and giving to our environment a very special status.

Designer:

Sam Baron

Materials and finishing:

Base in marble (*Onice sultano, Dolce Vita or Irish Green*), body in natural copper or with vert-de-gris finish.

Dimensions (H x W x D) cm:

70 x 38 x 18

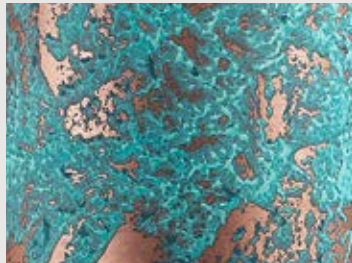
30 x 28 x 10

ABORAM

finishes and marbles



Natural copper



Vert-de-gris



Onice sultano



Dolce Vita



Irish Green



*“Lost in the forest
Warrior women dancing
Look: do not approach”*



AGAXA

stool



Agaxa comes from the combination of the creative power of man and the beauty offered by nature. A binomial in constant search of balance. The iron structure is covered by multiple layers of leather, placed to create color gradations that transforms the normal stool into a valuable object.

Designer:
CTRLZAK

Materials and finishing:
Diverse *Nabuk* hand sanded pieces of leather and diverse *Cavallino* pieces of leather on iron structure in two finishes: matte “tailor made” gold or polished black chrome.

Dimensions (H x W x D) cm:
70 x 70 x 40

AGAXA

leather combinations



Black and grey leather on black chrome structure



Green and brown leather on gold structure



Dark brown and brown leather on gold structure



Orange and brown leather on gold structure



Brown and beige leather on gold structure



*"Without description
Beautiful and nothing hurt
Zetsuen densen"*



AMEDEA

armchair



Amedea is the materialization of the invisible, floating paths that every moment connect our existences to an infinite system of emotions, places, and memories. Like in a revealing frame, these connections become visible, crystallizing in the sinuous curves that constitute the sitting and the back of this armchair: a static piece of furniture that becomes an iconic, dynamic item.

Designer:
Debonademeo

Materials and finishing:
Metal structure with polished gold finish, metal tubes covered in foam, upholstery in black elastic fabric.

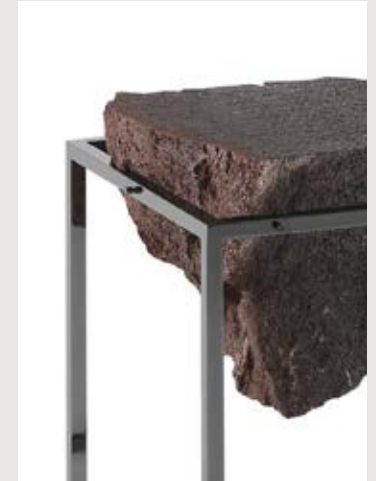
Dimensions (H x W x D) cm:
100 x 147 x 80

*"The floating islands
Of Arrakoth are home to
Many mutant forms"*



ANTIVOL

side tables



A fragment of lava stone cut in half supported by a simple metal frame: nature presented in its primordial form.
An elemental coffee/side table with a structure in matte brass or black chrome finish encapsulating a piece of lava stone from Sicily that is unique each time.

Designer:
CTRLZAK

Materials and finishing:
Lava stone top with metal structure in two finishes: polished black chrome and matte brass.

Dimensions (H x W x D) cm:
65 x 40 x 40
45 x 40 x 40



*“Soft mounds entice you
To the basement, the forest
To find your comforts”*



BELMER

sofa system



Between sculpture and design, *Belmer* is a wonder-object, suggesting a newly discovered sociality. With its big dimension *Belmer* goes against the trend of the growing, contemporary, miniaturization, appearing as an alien organism, coming from a galaxy where everything is yet to be discovered.

Designer:
Matteo Cibic

Materials and finishing:
Wooden structure with patinated gold liquid metal lacquer; polyurethan foam; upholstery in velvet.

Dimensions (H x W x D) cm:
105 x 320 x 160 _ multi-seats sofa
105 x 250 x 110 _ two-seats sofa
78 x 120 x 100 _ armchair
44 x 115 x 85 _ small table

BELMER

sofa system



armchair



small table



two-seats sofa





multi-seats sofa



*"Hanbun no mata
A dream that ends in nothing
Open to claim prize"*



DEBEAM

console



Information technology and geometric shapes drawn inside of an ideal cage that determines mathematically their precision. *Debeam* makes the invisible visible: its dogmatic lines materialize, acquiring aesthetic value, while the geometrical solid fades. A console with a double soul, characterized by contrasting materials, that contains and exposes at the same time.

Designer:
Debonademeo

Materials and finishing:
Metal cage with polished gold finish, extra-clear glass structure.

Dimensions (H x W x D) cm:
90 x 167 x 47

*"Twins are different
The mirror does not reflect
All that it can see"*



DOLMLOD

small table



Dolmłod comes from the meeting between plays of reflections in a mirror and three dimensional volumes. A transparent case that frames and creates a reflected image, preserving and creating a new reality.

Designer:
CTRLZAK

Materials and finishing:
Extraclear silver mirror and extraclear glass with a polyurethane structure in silver finish.

Dimensions (H x W x D) cm:
33 x 140 x 70
33 x 70 x 70

*“At the end of time
When humans live in darkness
Robots see for them”*



DROBOT

lamps



Betoo, Rone and Threeve come from a JCP universe's science-fiction movie, where notions of the past become the future and what we perceive as history has yet to be seen. Looking like little robots with an unexpected soul, they light the unseen and become characters able to transform everyday life.

Designer:
Richard Hutten

Materials and finishing:
Metal structure in chrome finish.

Dimensions (H x W x D) cm:
50 x 26 x 24_ *Betoo*
160 x 40 x 40_ *Rone*
140 x 44 x 38_ *Threeve*

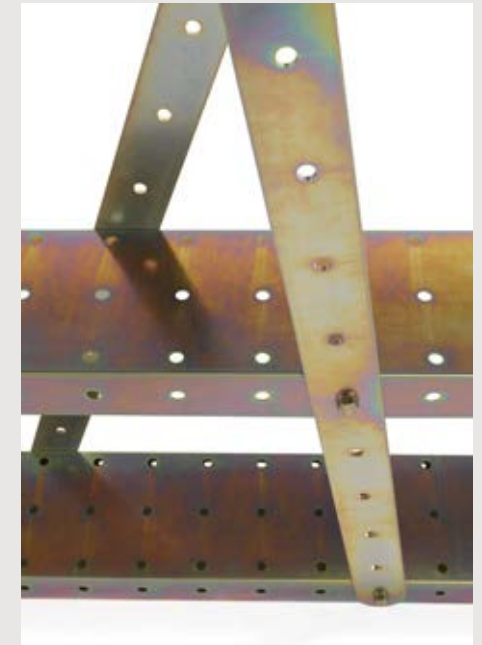


*"Measured out and bolted in
Is where you find your freedom
From all that you want"*



ERET

console



Over a hundred years since its inception, around the world there are thousands of Meccano players and fanatics, many clubs and hundreds of websites covering its history, model building instructions and nostalgia. A toy conceived back in 1898, but the fact is that it is more than a toy: it's educational, it teaches basic mechanical principles and it inspired this brand new artifact.

Eret is a console made of stainless steel consisting of perforated metal surfaces and fixing bolts.

Designer:

Samer Alameen

Materials and finishing:

Galvanized stainless steel.

Dimensions (H x W x D) cm:

200 x 270 x 36

*"Magic is real here
Sooner or later you see
What's on the inside"*



FYLGRADE

sofa \ armchair



Fylgrade is a series of seats whose cuts reveal the careful finishing in fine fabrics from the archives of *Rubelli* and *Luigi Bevilacqua*. A refined and hidden soul emerges from the tears in the leather upholstery. It is an object that challenges the observer to search for the fine details that make it a unique and complete composition.

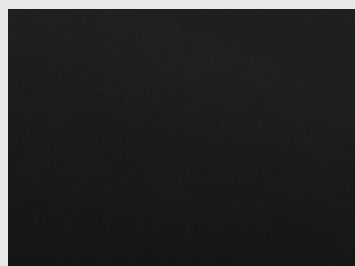
Designer:
CTRLZAK

Materials and finishing:
Upholstery in aniline vegetal-tanned leather (black, stone & taupe) and historical *Luigi Bevilacqua* (turquoise) or *Rubelli* fabric (gold & cardinal red).

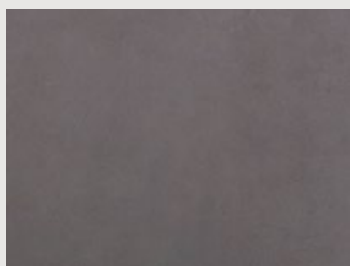
Dimensions (H x W x D) cm:
94 x 208 x 82 _ sofa
90 x 118 x 90 _ armchair

FYLGRADE

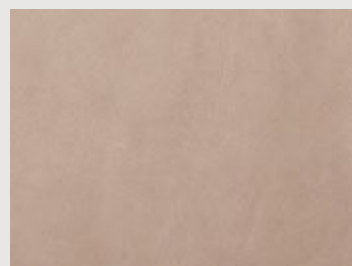
leather and historical fabric selection



Aniline vegetal-tanned leather
BLACK



Aniline vegetal-tanned leather
STONE



Aniline vegetal-tanned leather
TAUPE



historical fabric from the
archives of "Luigi Bevilacqua"
BROCCATELLO - TURQUOISE



historical fabric from the
archives of "Rubelli - Venezia"
JACQUARD - GOLD



historical fabric from the
archives of "Rubelli - Venezia"
JACQUARD - CARDINAL RED



*“Shrugging off the years
The winter clothes you wore out
Hang up your time here”*



GALAVER

hat and coat stand



Galaver is the embodiment of glorification, an ordinary clothing rack that becomes a special and precious object beyond its simple function.

Designer:
Emanuele Magini

Materials and finishing:
Metal structure in “tailor made” gold finish on wooden base in matte black finish.

Dimensions (H x W x D) cm:
180 x 30 x 30

*"Best lenses online
Beware the Jabberwock, my son
Yume no ato"*



GLACOJA

centerpiece \ vase



Emerald



Ochre



Violet

Excavated from the heart of a glacier, formed through the imagination of an artificer nearly arrived in the JCP Universe. A unique piece sculpted through technology and craftsmanship in a block of plexiglass.

Designer:
Analogia Project

Materials and finishing:
Hand-sculpted transparent methacrylate with acrylic coloration.

Dimensions (H x W x D) cm:
7 x 30 x 25
30 x 19 x 10

GLACOJA

centerpiece \ vase



*"You can warp yourself
Through hollow dimensions to
Infinity's end"*



GLOME

vases



Glome X



Glome Y



Glome Z

Cosmic spheres offering glimpses of moments of creation from the JCP Universe. The *Glome* vases are containers of primordial creation, sculptures in their own right, that can nest natural creations of this world. Mouth blown in the island of Murano these unique glass pieces are suspended in a simple metal wireframe base that completes the object in a balance of elementary forms and light.

Designer:
CTRLZAK

Materials and finishing:
Mouth-blown Murano glass with metal base in polished black finish.

Dimensions (H x W x D) cm:
25 x 25 x 25



*"Claustrophiliac
Open up what has been shut
To see the outside"*



IXORB

sofa



The perception of space and the planning of a design on paper come to life in *Ixorb*, the sofa whose volumes are enclosed in a dimension of perspective that guides the eye to see the design beyond the space of reality. A trick of projection or architecture with a perfect perspective?

Designer:
Alessandro Zambelli

Materials and finishing:
Graphite finish metal structure with seats in *Jacroki* \ *Racy* fabric upholstery.

Dimensions (H x W x D) cm:
83 x 162 x 170

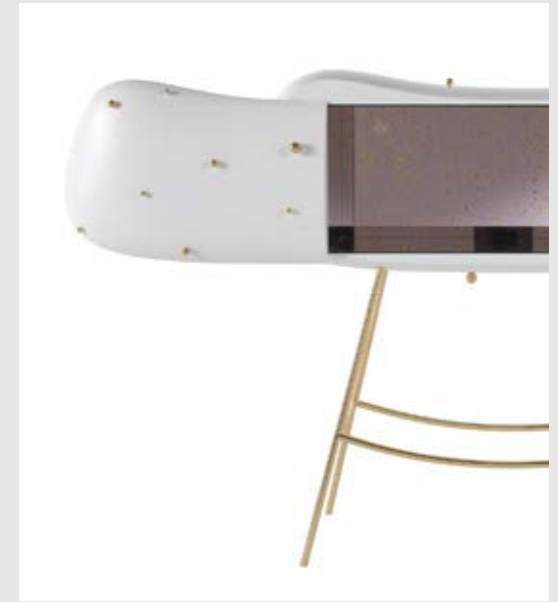


*"Opened up, obscene
Your unfortunate virtue
Is struck by lightning"*



JUSTINE (limited edition 33 pieces)

cabinet



Justine is a wonder-object: in a world where treasured objects dematerialize, containers become the real protagonists. Conceived as a coffer, *Justine*, with its soft and smooth lines, appears in the domestic space as a cabinet with a surprise effect, offering a view on a hybrid universe, characterized by unexpected contrasts.

Designer:

Matteo Cibic

Materials and finishing:

Polished gold finish metal structure; white matte wooden container; polished gold finish metal spheres; inner side in special decorative mirror.

Dimensions (H x W x D) cm:

130 x 150 x 50

*“Remnants of a home
A fortress of solitude
Lit by dying suns”*



KRYPTAL

table lamp



A scientific instrument from the past, lit by magic, sustained in lava stone. A table-top lamp with a base in lava stone, brass parts, borosilicate glass in two finishes and an internal natural led light that is switched on via a touch sensor.

Designer:
CTRLZAK

Materials and finishing:
Lava stone base with matte brass structure and glass body.

Dimensions (H x W x D) cm:
75 x 33 x 15



*“You have been so good
That your lover has brought you
Lavish punishments”*



LAV

vases



Herma

Rapunza

Wanda

War is a nightmare in any Universe and it damages the physiological and mental health of too many civilizations. These small containers come with the idea of overcoming this horrifying reality by using the exact shape of a rocket and transforming it into an humorous, yet functional, home accessory. If opened up these vases reveal a surprise: the concept is to simulate the bang effect of a bomb, causing an explosion of joy and pleasure...

Designer:
Richard Yasmine

Materials and finishing:
Diverse matte marbles and 3D printed elements in patinated bronze finish.

Dimensions (H x W x D) cm:
30 x 13 x 13 _ *Herma*
40 x 8,5 x 8,5 _ *Wanda*
20 x 10,5 x 10,5 _ *Rapunza*

Carrara



Nero Marquina



Pink Portugal



*“Moonscraper music
Machine intelligences
Bound by song and string”*



LIGOMANCER

sofa \ armchair



Ligomancer is a series of seats where that which is normally hidden is shown. More than one hundred meters of elastic band, the type usually used for the internal structure of cushioned furniture, is wrapped and woven around a fine tubular frame.

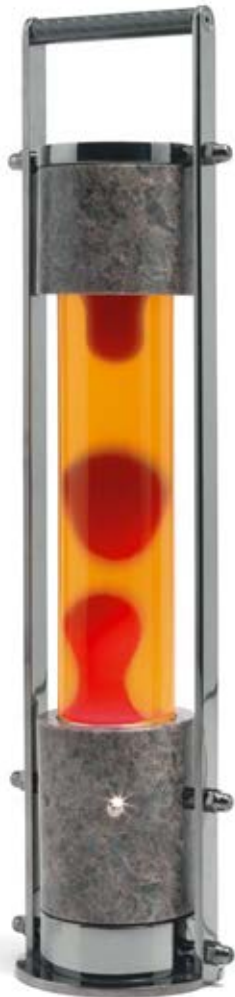
Designer:
CTRLZAK

Materials and finishing:
Black elastic support bands with metal tubular structure in two finishes: “tailor made” copper or polished black.

Dimensions (H x W x D) cm:
80 x 220 x 87 _ sofa
80 x 125 x 87 _ armchair



*“Kakemeguru
Light of my life, fire of my loins
Dark web collectors”*



MALVAZ

lava lamp



An instrument containing the essence of a fire elemental captured directly from the heart of an active volcano. The classic lava lamp re-imagined under the filter of the eclectic JCP Universe.

Designer:
CTRLZAK

Materials and finishing:
Base in *Antique Labrador* granite, body in glass and metal with black chrome finish, wire in carbon, wax and light bulb.

Dimensions (H x W x D) cm:
45 x 9,5 x 7,7

*"Foreign embassy
The clocks were striking thirteen
Natsukashi ya"*



MASEEN

side tables

Maseen A-X



Maseen A



Maseen E



Samer Alameen's passion for Meccano finds a new form in *Maseen* side tables. More than a childhood toy or memory, Meccano represents the possibility for a single piece to mutate form. These circular pieces, just like cogs, give motion and create a feeling of time.

Designer:
Samer Alameen

Materials and finishing:
Structure in metal with matte brass finish (Maseen A-X), matte copper finish (Maseen A), matte chrome finish (Maseen E).

Dimensions (H x W x D) cm:
40 x 50 x 50 _ A-X
45 x 40 x 40 _ A
50 x 30 x 30 _ E

*“Kurumaza ni
What cannot be said will be
Home made growth hormones”*



METTIC

table



Mettic is an uncommon dining table, whose decorated legs remind of plants from a world unseen. With its reflecting surface, it surprises the spectator, encouraging him to look at things from a new perspective.

Designer:
Matteo Cibic

Materials and finishing:
Lacquered wood structure, cylindric applications in metal with polished copper finish, top surface in decorated copper mirror.

Dimensions (H x W x D) cm:
70 x 210 x 89

*“She brushes her black hair
Looking into her own eyes
And planets are made”*



NAIA

table mirror



A reflective surface coupled with an entire planet: vanity in its supreme. A table-top mirror with a matte brass cylindrical base and a semi-circular frame that balances a polished steel mirror attached to a veined marble surface unique for each piece.

Designer:
CTRLZAK

Materials and finishing:
Diverse marbles and super mirror steel with polished brass base and matte brass frame.

Dimensions (H x W x D) cm:
33 x 26 x 6



Honey Onyx



Palomino



Red Travertine



Yellow Travertine



"You try to escape
The further away you run
The more it loves you"



OGLOF (limited edition 33 pieces)

pouf



Oglof is a pouf made from kilometers of fine fringe, that creates a flowing and shining surface. At the limits of the true definition and functionality, *Oglof* is offered as an eccentric piece of furniture with a secret soul – that you can sit on.

Designer:
CTRLZAK

Materials and finishing:
Memory Foam cushioned structure with black and blue thin *Cordonetto* fringes.

Dimensions (H x W x D) cm:
63 x 90 x 92

*"Footstep of a cat
Uncertainty principle
The roots of a cloud"*



ORAURO (limited edition 33 pieces)

sofa



Orauro is the transformation of the idea of a sofa. The classic capitonnée (or quilted upholstery) is emptied: only the trace of its folds and of its volume remains. An intricate and indestructible cage, twine of gold and air that outlines the essence of the object and highlights its precious soul.

Designer:
Emanuele Magini

Materials and finishing:
Metal structure in "tailor made" gold finish.

Dimensions (H x W x D) cm:
85 x 247 x 100

*"The light's energies
Accumulate in your bones
And burst the clouds above you"*



ORGONE

lamp



"Soap bubbles are sparkling and effervescent. They are calm, beautiful, sublime, ever enduring and climbing upward to the borders of the unseen world."

An iconic piece that every adult and child relates to.

An ambient lamp with a base in brass, and borosilicate glass with internal light.

Designer:

Samer Alameen

Materials and finishing:

Brass structure, led light, iridescent borosilicate glass shade.

Dimensions (H x W x D) cm:

32,5 x 70 x 30

*"The Moon-King's three sons
Neutronium covers skin
Supernormal prize"*



OSFORTH

throne



Osforth is a majestic and fairytale style chair. A story told through a luxurious ruby-colored tufted carpet enclosed in a golden frame.

Designer:
Emanuele Magini

Materials and finishing:
Hand-woven red carpet in Bamboo Silk on metal structure in matte "tailor made" gold finish.

Dimensions (H x W x D) cm:
150 x 59 x 62-500

*"They need new mirrors
More than they need strange new worlds
To find aliens"*



PERFLECT

display cabinets



Inspired from the middle age and renaissance gravures about the optical illusion and sense of depth researches, *Perfect* is a set of bookshelves-cabinets made of three black metal thin and elegant structures and mirrored surfaces de-multiplying any collectible items placed in it.

Designer:

Sam Baron

Materials and finishing:

Metal structure in grained black finish with super mirror steel panels.

Dimensions (H x W x D) cm:

200 x 78 x 30 _ central unit

210 x 110 x 30 _ side units



*“Objects reflected
Call you to the other side
To touch them, like here”*



REXALT

seat



An inclined plane: space-time horizon of ephemeral essence that separates and joins at the same time. Two spheres: massive malleable forms that meld together in this plane perceiving themselves through it. Looking like a distorted reality by a mirror, every sphere sees the other one and they recognize themselves only occasionally. This destabilizes uncertainty, suggests that it is not possible to base the knowledge only on what is perceived through the senses, but it is necessary to extend the vision to go deep into the existence.

Designer:

Alessandro Zambelli

Materials and finishing:

Metal structure in matte black finish with PVC net and spheres in Jersey upholstery.

Dimensions (H x W x D) cm:

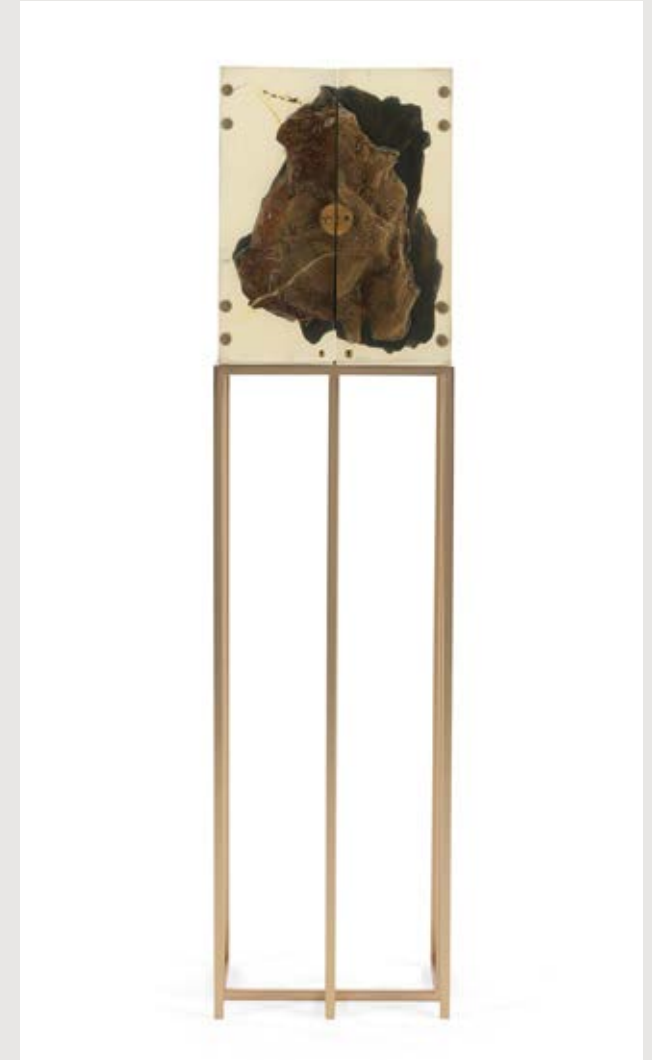
160 x 64 x 71

*“The inhabitants
Revere and preserve the things
That fall from the sky”*



SIDEROID ZENITH (limited edition 33 pieces)

cabinet



Objects of desire coming from the stars (de sidere “from the stars,” from sidus (genitive sideris) “heavenly body, star, constellation”). Art objects that double as containers of precious items. Based on the scan of a real meteorite found in “Sikhote-Alin” impact site and then printed in 3d, the volume of the meteorite (Siderite iron) is segmented and encapsulated in a block of resin finished in brass details.

Designer:

Livio Ballabio + CTRLZAK

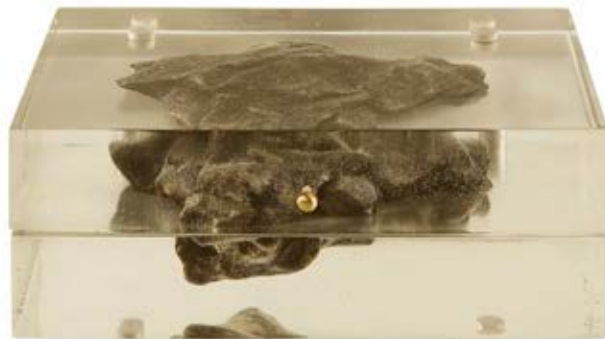
Materials and finishing:

3D printed meteorite in resin body on metal structure in matte brass finish.

Dimensions (H x W x D) cm:

145 x 34,5 x 23

*“The inhabitants
Revere and preserve the things
That fall from the sky”*



SIDEROID AZIMUTH

small coffer



Objects of desire coming from the stars (de sidere “from the stars,” from sidus (genitive sideris) “heavenly body, star, constellation”). Art objects that double as containers of precious items. Based on the scan of a real meteorite found in “Sikhote-Alin” impact site and then printed in 3d, the volume of the meteorite (Siderite iron) is segmented and encapsulated in a block of resin finished in brass details.

Designer:

Nikos Sideris + CTRLZAK

Materials and finishing:

3D printed meteorite in resin body and brass parts.

Dimensions (H x W x D) cm:

11 x 28 x 18

*"Singles in your town
Disturb the universe
Me ha namida"*



SOPOVRIA

coffee tables



Everything has a soul: in many cultures objects, places, and materials are attributed with divine or supernatural qualities. *Sopovria* is a family of diaphanous items, whose contours dissolve and melt with the surroundings. At the same time, we can spot their soul, balanced between transparency and color. Zoomorphic shapes characterize these coffee tables, little creatures that are here to keep us company.

Designer:
Sovrappensiero

Materials and finishing:
Structure in matte plexiglass, surface with gradient print, coral or mint colour.

Dimensions (H x W x D) cm:
35 x 90 x 90 _ *So*
45 x 45 x 45 _ *Va*
30 x 60 x 60 _ *Re*

"Horizon below
The bird and eternity
Both give you new life"



SUN-RA (limited edition 99 pieces)

lamps



Characterized by an hybrid identity, between art and design, the *SUN-RA* lamps highlight the synthesis of Nanda Vigo's career: the search for the interference between space and light where the project stops being only an object and becomes an artwork. Simple lines in the space, find their configuration thanks to a segment of light. *Trait d-union*, both concrete and conceptual, light becomes the joint element of the whole composition and declares at the same time the function of the object itself.

Designer:

Nanda Vigo

Materials and finishing:

Bird/Eternity: chrome finish metal structure, blue strip led.

Horizon: chrome finish metal structure, blue, green and warm white strip led.

Life: chrome finish metal structure, blue and warm white strip led.

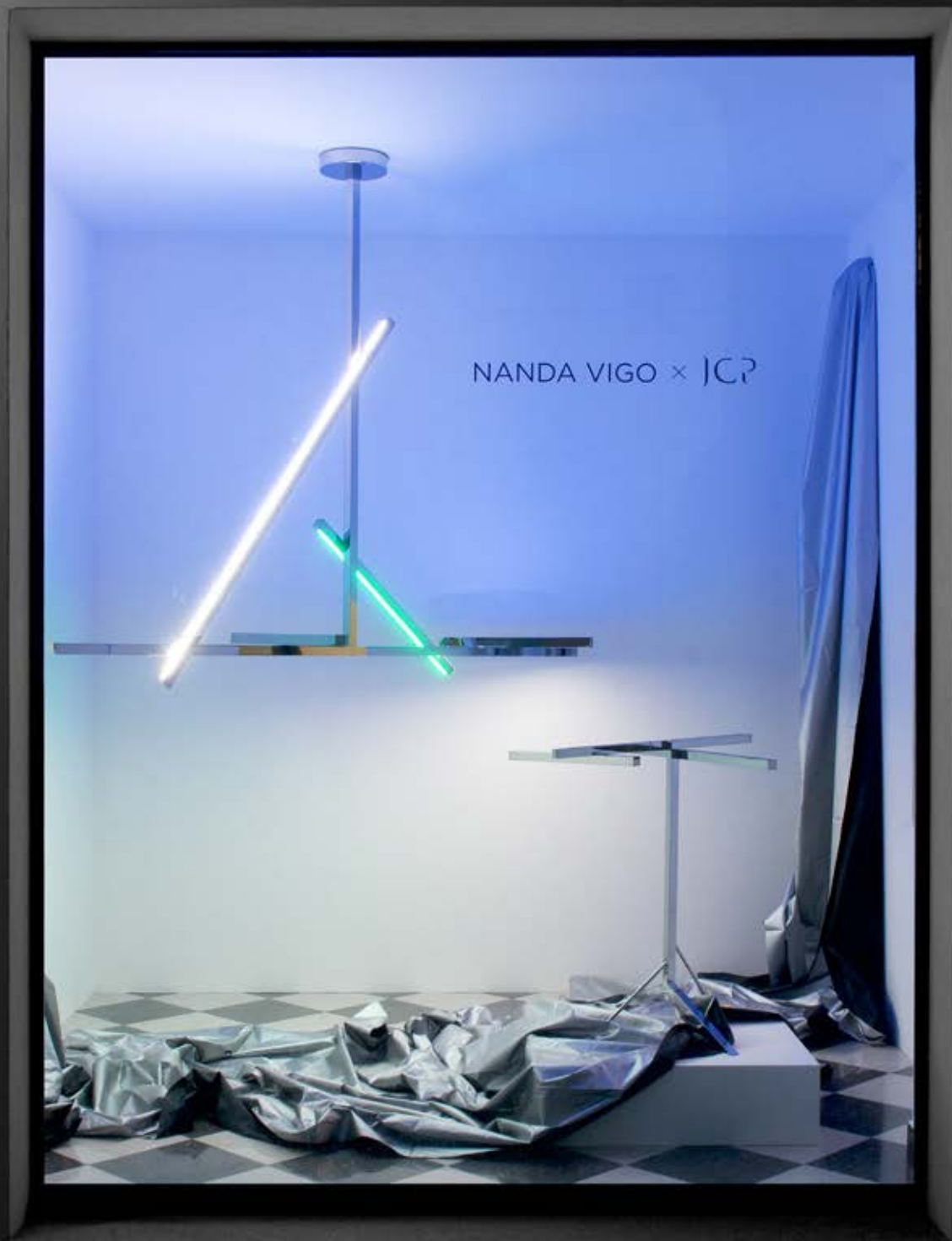
Dimensions (H x W x D) cm:

80 x 60 x 40 _ *Bird*

80 x 82 x 60 _ *Eternity*

150 x 200 x 60 _ *Horizon*

205 x 200 x 60 _ *Life*

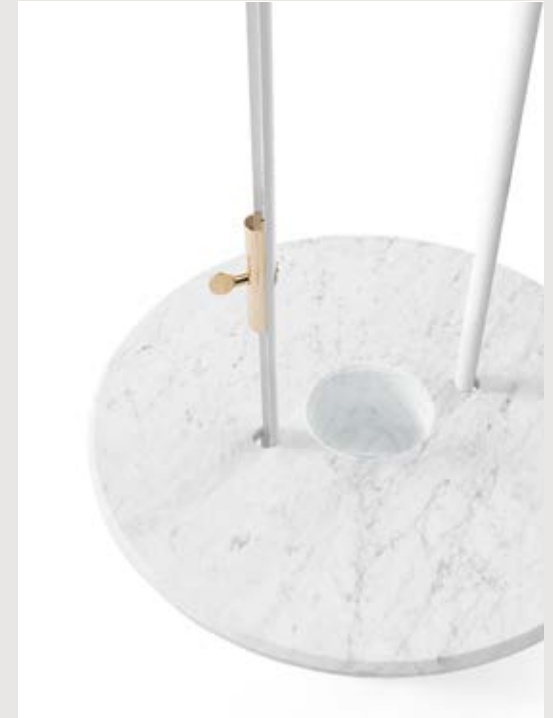


*“Winning but always
Distracted by the beauty
Of things out of reach”*



SURANDE

side table \ lamp



Surande, sculpted from marble and illuminated by a visionary light, it is an object that goes beyond the dimension of reality. The suspended glass sphere – whose height can be regulated – reflects the light and gives its environment an iridescent and beguiling atmosphere.

Designer:
Alessandro Zambelli

Materials and finishing:
Matte finish turned *Carrara* marble and metal structure in white porcelain finish with iridescent borosilicate glass globe.

Dimensions (L x H; H') cm:
65 x 160; 45

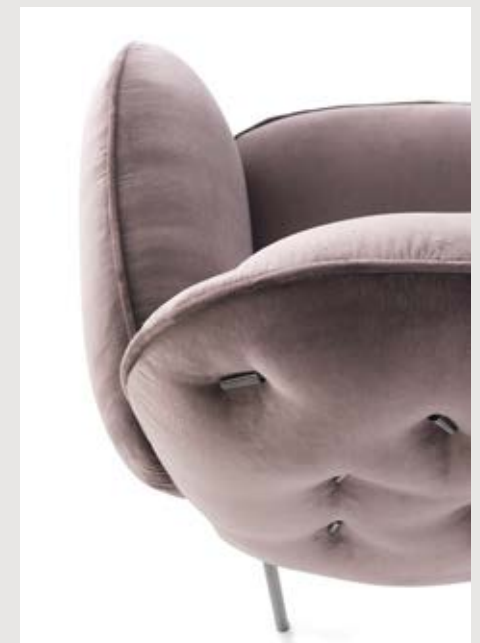
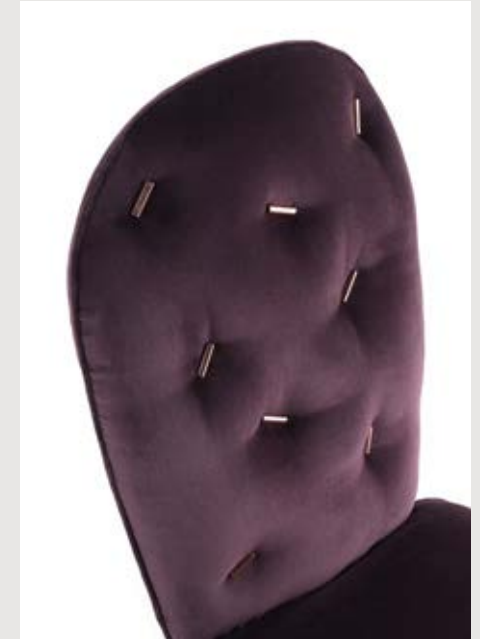


*"Kurumaza ni
What cannot be said will be
Home made growth hormones"*



TTEMIC

chair



Two wonder-objects that revolutionize the traditional dining room: *Ttemic* chairs are unconventional pieces, with upholstery in velvet and cylindric applications.

Designer:
Matteo Cibic

Materials and finishing:
Metal structure with copper or black chrome finish, upholstery in velvet, cylindric applications in metal with copper or black chrome finish.

Dimensions (H x W x D) cm:
98 x 52 x 41,5
98 x 41 x 41,5

*"Hatsu shigure
What light through yonder window
View will expire soon"*



UNDISM

mirror



Doors and windows to the imagination, concrete fragments, visionary passages. Leaning on the wall or on a console, *Undism* mirrors show themselves as simple forms of altered perspectives, openings to another dimension of living.

Designer:
Gumdesign

Materials and finishing:
Super mirror steel, structure in wood with cement finish.

Dimensions (H x W x D) cm:
180 x 60 x 8
80 x 48 x 8

*"Like poison pitchers
Your spaces are not empty
They invite, like traps"*



VENNY

coffee tables



Venny coffee tables are sculptures with a double function, characterized by extravagant colors. They suggest, with their surfaces at different heights and with their circular openings, innovative and extraterrestrial forms, landing in the domestic space as wonder-objects.

Designer:
Matteo Cibic

Materials and finishing:
Polished gold finish metal structure with top surfaces in special decorative mirror.

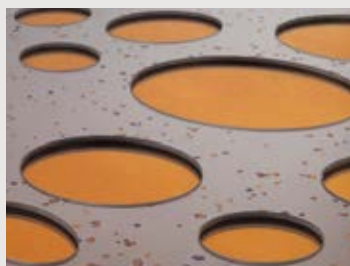
Dimensions (H x W x D) cm:
38 x 100 x 94
30 x 80 x 75

VENNY

colours combinations



Moon



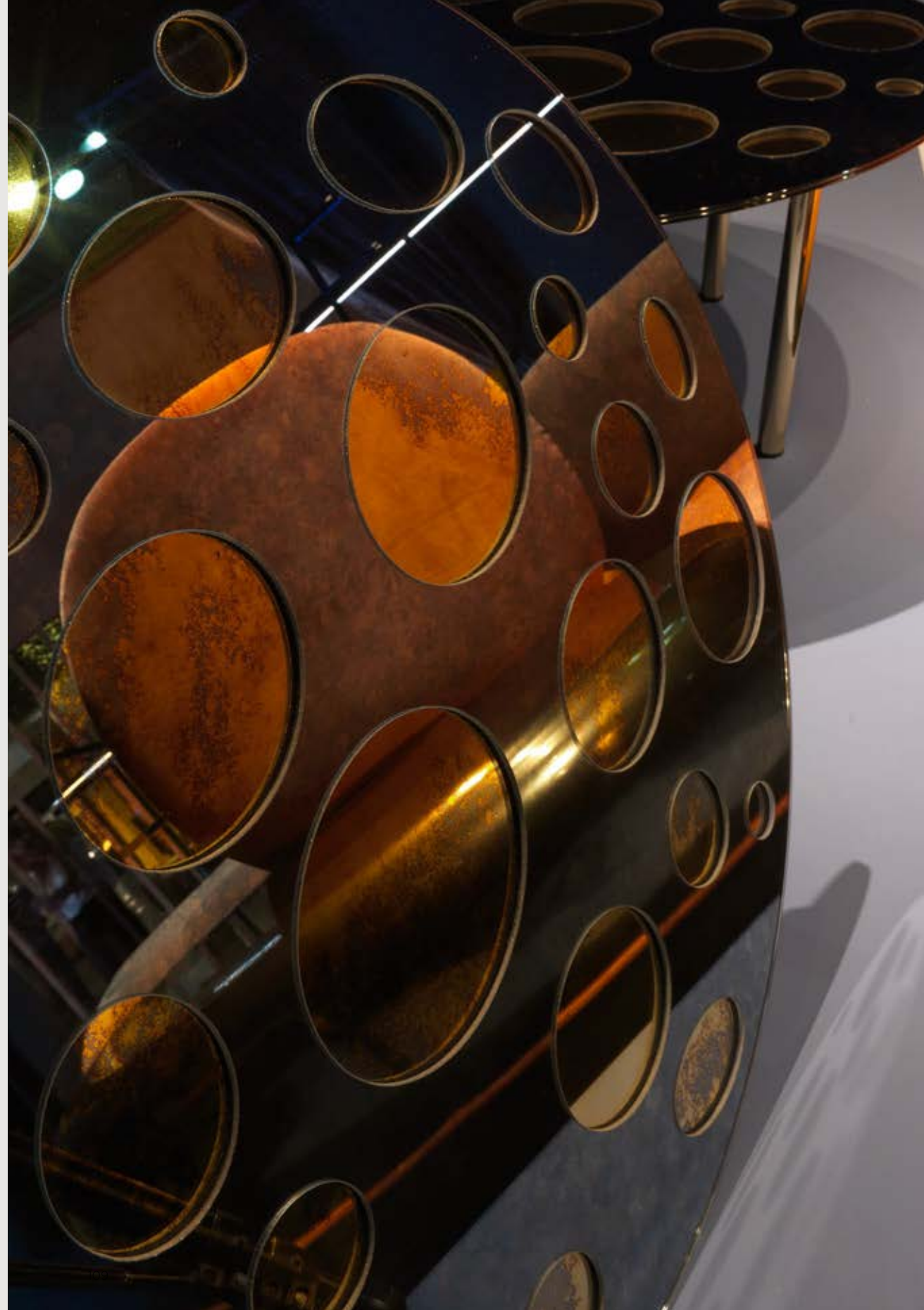
Pink Star Dust



Blue Star Dust



Cobalt Blue Volcano



WORLDS UNSEEN

foulard



JCP Universe, in partnership with *Galleria Bianconi*, was glad to present a new suggestive exhibition curated by CTRLZAK on the occasion of Milan Fashion Week. The event aims to bring the creativity of contemporary art in the world of fashion, showcasing the work of 12 creatives from diverse backgrounds through a common canvas made of silk.

Designer:

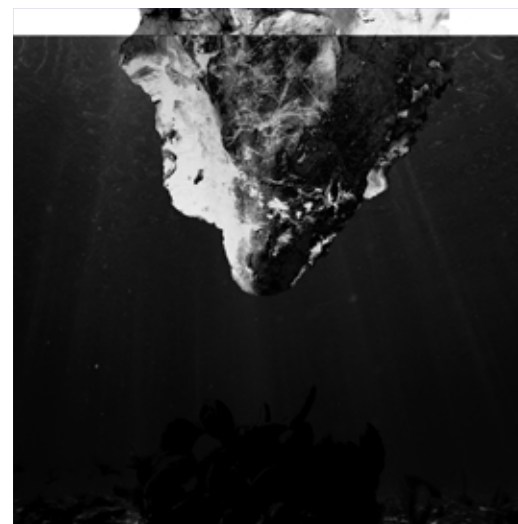
Athanasios Alexo, Livio Ballabio, Alistair Gentry, Kensuke Koike, Lidia Meneghini, Claudia Origgi, Federico Pepe, Nikos Sideris, Leonardo Sonnoli, Davide Tranchina, Poka Yio, Thanos Zakopoulos

Materials and finishing:

Digital print on silk.

Dimensions (W x D) cm:

90 x 90



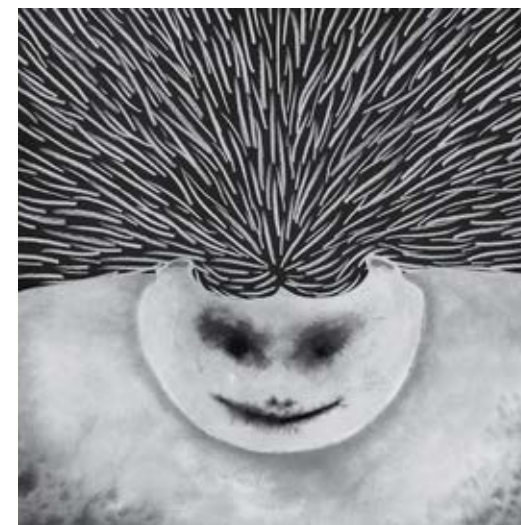
Sinergia
by Athanasios Alexo



Mortal Mandala
by Livio Ballabio



The Traveller
by Alistair Gentry



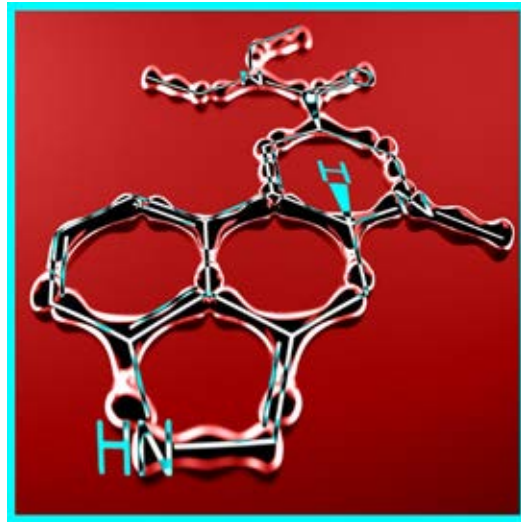
Ghost
by Kensuke Koike

WORLDS UNSEEN

foulard



Mnemonic
by Lidia Meneghini



The Gate
by Claudia Origgi



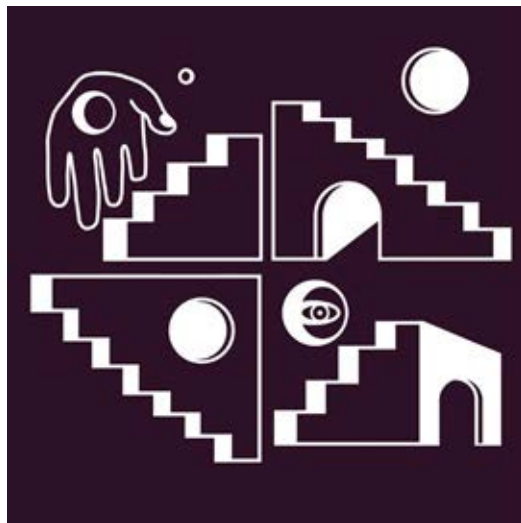
Unseen hijab
by Leonardo Sonnoli



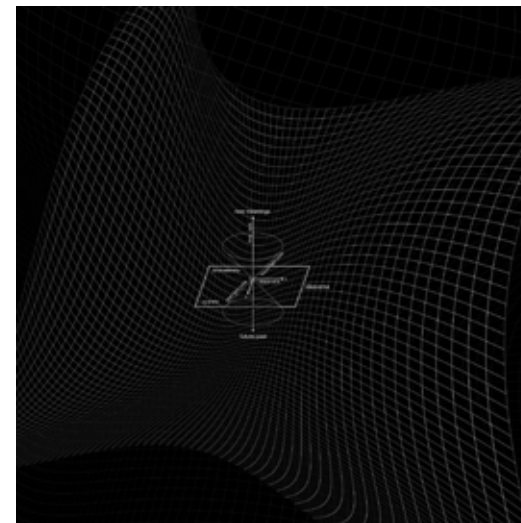
40notti Montecristo #2
by Davide Tranchina



Un Esploso
by Federico Pepe



Temples of the Universe
by Nikos Sideris



Creation of a Universe
by Thanos Zakopoulos



Rearranged Omonoia
by Poka Yio

TRANSFORM
NORMALITY

JCP is conceived by:

Livio Ballabio

&

Orchestrated by:

CTRLZAK

Haiku:

Alistair Gentry

Photos:

Silvio Macchi

Photos Postproduction:

Monogramma Graphic Lab

Printed & Binded in 2019 by

Grafica Gioia

JCP s.r.l.

Via Montesolaro 14/B

22063 Cantù (CO)

Italy

+39 031 7075 777

info@jcpuniverse.com

www.jcpuniverse.com

VAT number

IT03677300133

