



RUG'SOCIETY
THE DELUXE OF PAST & PRESENT

RUG'SOCIETY

THE DELUXE OF PAST & PRESENT

RUGS
RUGS
RUGS
RUGS
RUGS
RUGS

CONTENTS

01 About Rug'Society5

02 Our Best Rugs8

03 New Urban Collection106

06 All Products136

ABOUT US

ABOUT US

RUG'SOCIETY





AGATHA Rug, WALES Bench by BRABBU and CYRUS DOUBLE II XL Wall Light by BRABBU

ABOUT US

Rug'Society is an exquisite Portuguese brand of handcrafted and bespoke carpets and rugs that aims to transform rugs into pieces of art. Rug'Society's starting point for every design is a strong connotation to the eclectic style and the goal to transmit emotions, while keeping up with the latest trends, to make unique, exclusive and premium design products. Each product is operated by talented artisans who share a passion for handcrafted and bespoke carpets and rugs.

It is time to be masters in tapestry.

THE DELUXE OF



PAST & PRESENT

THE DELUXE OF



TED Rug and NAICCA Pendant Light by BRABBU

TED

SHAGGY COLLECTION



Dimensions:
200 x 300cm | 78,74" x 118,11" / 300 x 450cm | 118,11" x 177,17"
400 x 600cm | 157,48" x 236,22" / 600 x 800cm | 236,22" x 314,96"
*Custom dimensions upon request
Materials and Techniques: Hand-tufted | Botanical Silk, New Zealand Wool

TED Rug was born to create the first legacy of the shaggy collection. This exclusive rug mixes unique tones and unforgettable touches. An elegant and 100% hand-tufted rug, made with Bamboo Silk and New Zealand Wool, that brings comfort to your project.



SNAKE 8 Rug, CYRUS Table Light by BRABBU and COLOSSEUM Console by BRABBU

SNAKE 8

BOTANICAL COLLECTION

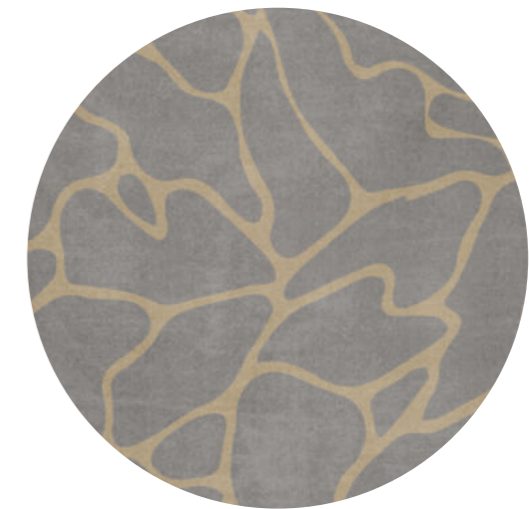


Dimensions:
200 x 300cm | 78,74" x 118,11" / 300 x 450cm | 118,11" x 177,17"
400 x 600cm | 157,48" x 236,22" / 600 x 800cm | 236,22" x 314,96"
*Custom dimensions upon request
Materials and Techniques: Hand-tufted, Overtufting | Natural Wool, Botanical Silk

The SNAKE 8 rug design is a representation and homage to the snake for having a very important significance in the culture of antiquities. A 100% handmade rug that combines the use of hand-tufted and overtufting techniques with natural wool and botanical silk.



CELL RUG
NEUTRAL COLLECTION



Dimensions:

Rectangular:

200 x 300cm | 78,74" x 118,11"
 300 x 450cm | 118,11" x 177,17"
 400 x 600cm | 157,48" x 236,22"
 600 x 800cm | 236,22" x 314,96"

Round:

Diam. 200cm | 78,74"

Runner:

W 115cm | 45,28"

*Custom dimensions upon request

Materials and Techniques: Hand-tufted, Overtufting, Carving | Natural Wool, Botanical Silk, Lurex

This rug will be the body of your dining room, bringing together all the other design cells in one perfect design body. CELL rug combines the grandiosity of three materials: Botanical Silk, Natural Wool and Lurex.



OSLO

SHAGGY COLLECTION



| 17

Dimensions:

Diam. 200cm | 78,74"

*Custom dimensions upon request

Materials and Techniques: Hand-tufted | Botanical Silk, New Zealand Wool

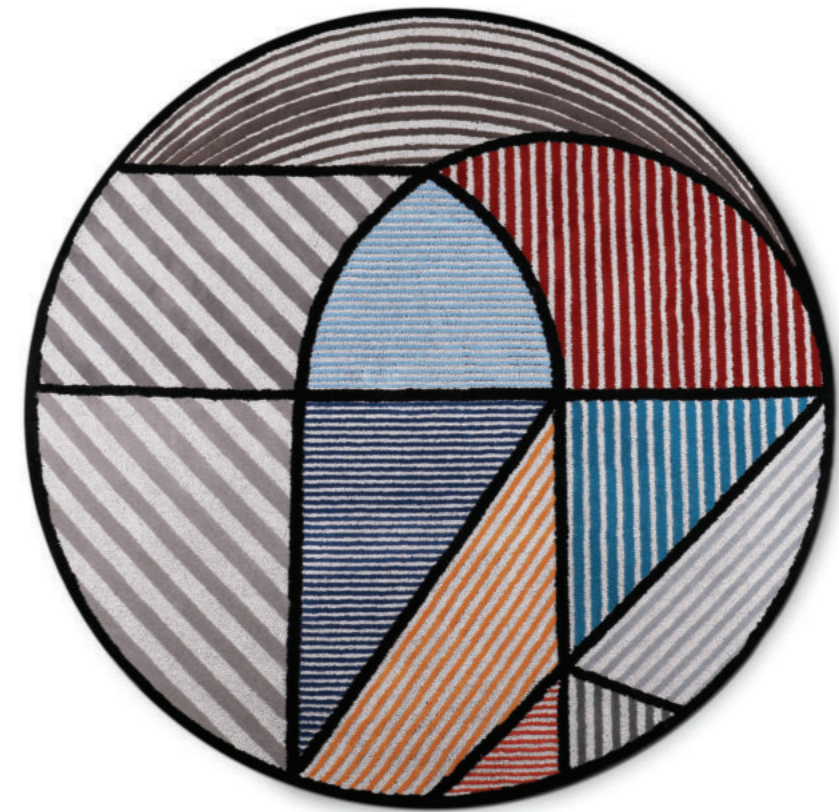
A rug that combines comfort with nobility, which shows that it is the perfect rug to dress a room in a cozier and more comfortable way. Made with Bamboo Silk and New Zealand Wool, this handmade rug promises to warm your heart on cold days.



LOLA Rug, BATAK BOLD Armchair by BRABBU, LATZA Side Table by BRABBU, CALLA Table Light by BRABBU and VELLUM Suspension Light by BRABBU

LOLA

GEOMETRIC COLLECTION



Dimensions:

Diam. 200cm | 78,74"

*Custom dimensions upon request

Materials and Techniques: Hand-tufted, Overtufting, Carving | Natural Wool, Botanical Silk Linen

Pop style and geometry hold hands in LOLA, a round modern rug full of personality dynamism, in which the design plays with the conjugation of straight lines and the round shape of the rug. A hand-tufted rug, made with New Zealand wool and Linen.



MIRA RUG
GEOMETRIC COLLECTION



Dimensions:

Rectangular:

200 x 300cm | 78,74" x 118,11"
300 x 450cm | 118,11" x 177,17"
400 x 600cm | 157,48" x 236,22"
600 x 800cm | 236,22" x 314,96"

Round:

Diam. 200cm | 78,74"

**Custom dimensions upon request*

Materials and Techniques: Hand-tufted | New Zealand Wool, Bambu Silk

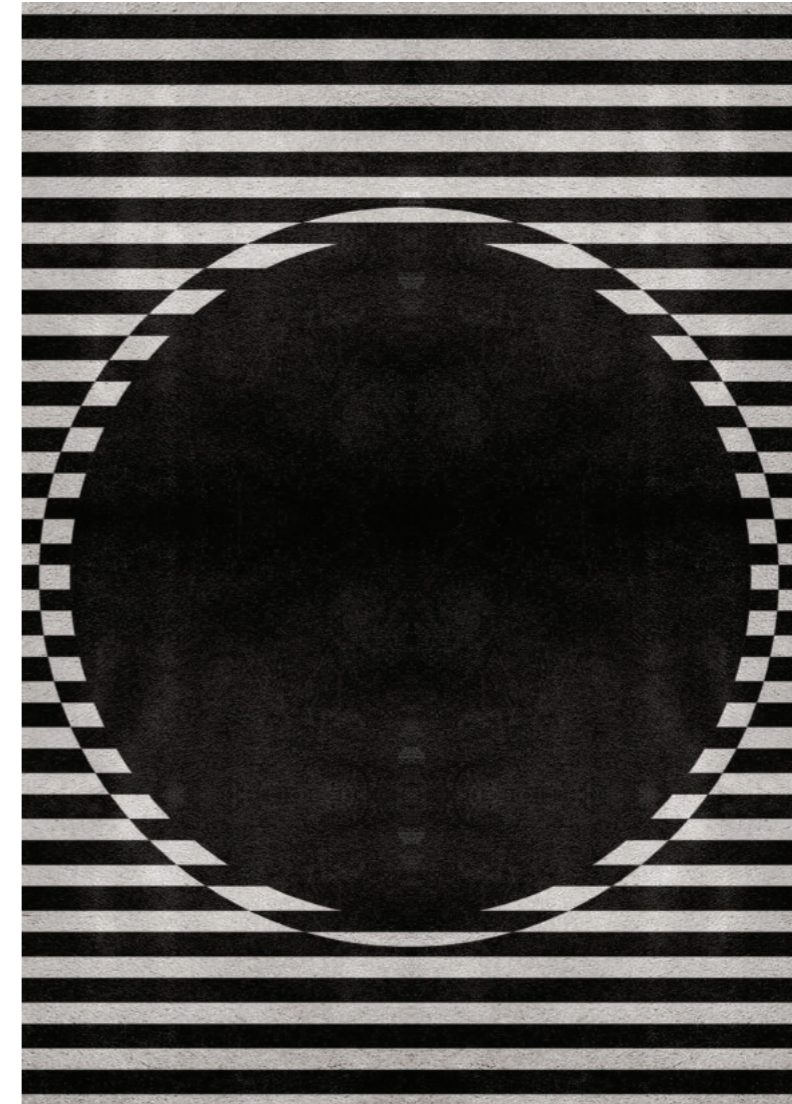
This bespoke rug, hand-tufted in botanical silk, deconstructs classic concepts with solid and simple plans, representing the influence of history in contemporary design.



OCLI Rug, AMIK Table Light by BRABBU and HUANG Sideboard by BRABBU

OCLI

GEOMETRIC COLLECTION

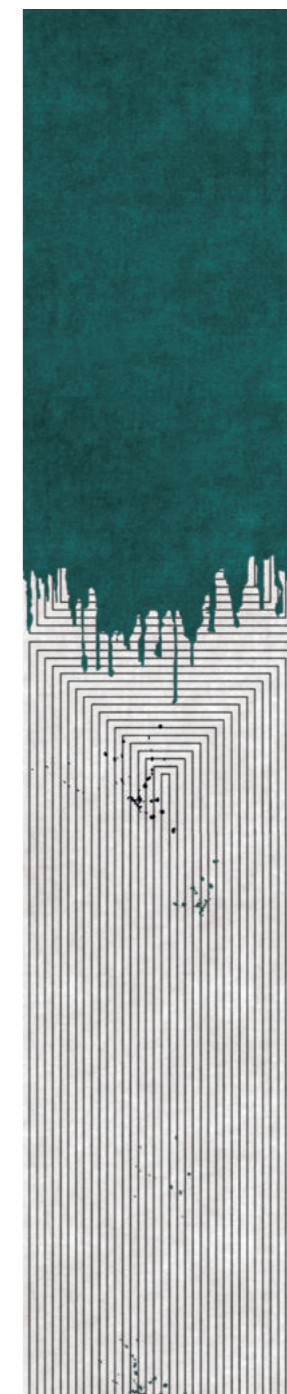


Dimensions:
200 x 300cm | 78,74" x 118,11" / 300 x 450cm | 118,11" x 177,17"
400 x 600cm | 157,48" x 236,22" / 600 x 800cm | 236,22" x 314,96"
*Custom dimensions upon request
Materials and Techniques: Hand-tufted, Overtufting, Carving | Natural Wool, Botanical Silk

With a minimalist sense, OCLI is a luxury contemporary rug that combines three different techniques, hand-tufted, overtufting, and carving, and is a 100% handmade rug made with natural wool and botanical silk.



VALENCIA RUG
CLASSIC COLLECTION



Dimensions:

Rectangular:
200 x 300cm | 78,74" x 118,11"
300 x 450cm | 118,11" x 177,17"
400 x 600cm | 157,48" x 236,22"
600 x 800cm | 236,22" x 314,96"

Square:
200 x 200cm | 78,74" x 78,74"

Runner:
W 115cm | 45,28"

*Custom dimensions upon request

Materials and Techniques: Hand-tufted, Overtufting | Natural Wool, Botanical Silk

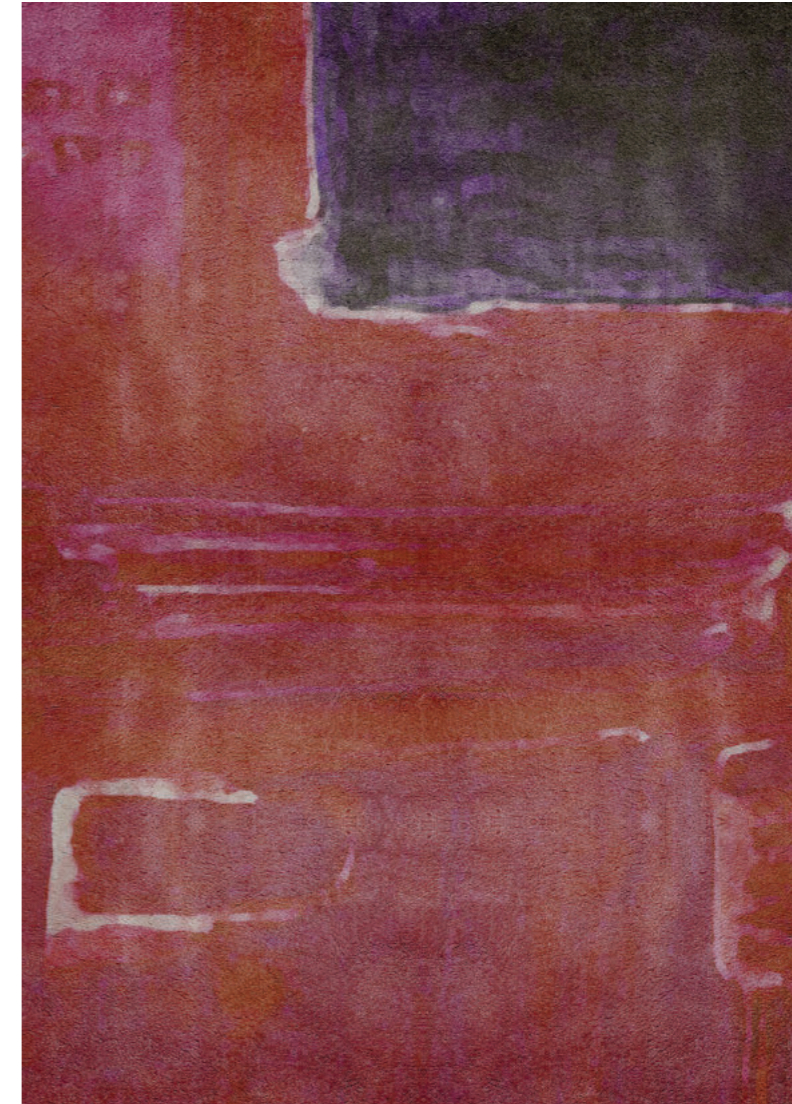
Inspired on a Summer trip to Valencia, a Spanish city where the heat is dominant and the colors vibrant. The registration of neutral but warm colors that transports us for an unparalleled comfort. VALENCIA rug is hand-tufted in Botanical Silk.



TOULOUSSE Rug and HORUS II Suspension Light by BRABBU

TOULOUSSE

NEUTRAL COLLECTION



Dimensions:

200 x 300cm | 78,74" x 118,11" / 300 x 450cm | 118,11" x 177,17"
400 x 600cm | 157,48" x 236,22" / 600 x 800cm | 236,22" x 314,96"
*Custom dimensions upon request

Materials and Techniques: Hand-tufted, Overtufting | Natural Wool, Botanical Silk

TOULOUSSE rug was born to transform any ambiance in a dream in shades of pink. A 100% handmade rug with Natural Wool and Botanical Silk, that transforms the comfort and beauty of your project.



HERON RUG
NEUTRAL COLLECTION



Dimensions:

| | |
|--|---------------------------------------|
| Rectangular: 200 x 300cm 78,74" x 118,11" 300 x 450cm 118,11" x 177,17" 400 x 600cm 157,48" x 236,22" 600 x 800cm 236,22" x 314,96" | Round: Diam. 200cm 78,74" |
| | Runner: W 115cm 45,28" |

*Custom dimensions upon request

Materials and Techniques: Hand-tufted | Botanical Silk

HERON rug was inspired in the elegance and grace of this beautiful species with the same name. The rug design features different heights of hand-tufted botanical silk, giving the rug a three-dimensional feel.



ROYALIS Rug, ARDARA II Console by BRABBU, ARUNA Wall Light and KAYAN Mirror by BRABBU

ROYALIS

CLASSIC COLLECTION



Dimensions:
200 x 300cm | 78,74" x 118,11" / 300 x 450cm | 118,11" x 177,17"
400 x 600cm | 157,48" x 236,22" / 600 x 800cm | 236,22" x 314,96"
*Custom dimensions upon request
Materials and Techniques: Hand-knotted | Natural Wool, Botanical Silk

ROYALIS is a luxury rug that was created to bring all the glamour of the royal style into the interiors. It is a 100% hand-knotted rug, made with Nobel materials:
Natural Wool and Botanical Silk.



IMPERIAL SNAKE RUG
NEUTRAL COLLECTION



Dimensions:

Rectangular:
200 x 300cm | 78,74" x 118,11"
300 x 450cm | 118,11" x 177,17"
400 x 600cm | 157,48" x 236,22"
600 x 800cm | 236,22" x 314,96"

Square:
200 x 200cm | 78,74" x 78,74"

Runner:
W 115cm | 45,28"

*Custom dimensions upon request

Materials and Techniques: Hand-tufted | Botanical Silk

The snake is one of the oldest and most well-known mythological symbols. IMPERIAL SNAKE is the most luxurious of our snake-based rugs, with its cream colors in botanical silk framing an elaborate and trendy design.



FELINE Rug, TELLUS BOLD Armchair by BRABBU and BRYCE Side Table by BRABBU

FELINE

BOTANICAL COLLECTION



Dimensions:

200 x 300cm | 78,74" x 118,11" / 300 x 450cm | 118,11" x 177,17"
400 x 600cm | 157,48" x 236,22" / 600 x 800cm | 236,22" x 314,96"
*Custom dimensions upon request

Materials and Techniques: Hand-tufted, Overtufting, Carving | Natural Wool, Botanical Silk

Rich in different textures and different materials, the FELINE rug is a metaphoric force that the animal may have in controversy with human action. A 100% handmade rug with Natural Wool and Botanical Silk.



ANTELOPE RUG
GEOMETRIC COLLECTION



Dimensions:

Rectangular:

200 x 300cm | 78,74" x 118,11"
 300 x 450cm | 118,11" x 177,17"
 400 x 600cm | 157,48" x 236,22"
 600 x 800cm | 236,22" x 314,96"

Square:

200 x 200cm | 78,74" x 78,74"

Runner:

W 115cm | 45,28"

*Custom dimensions upon request

Materials and Techniques: Hand-tufted | Botanical Silk

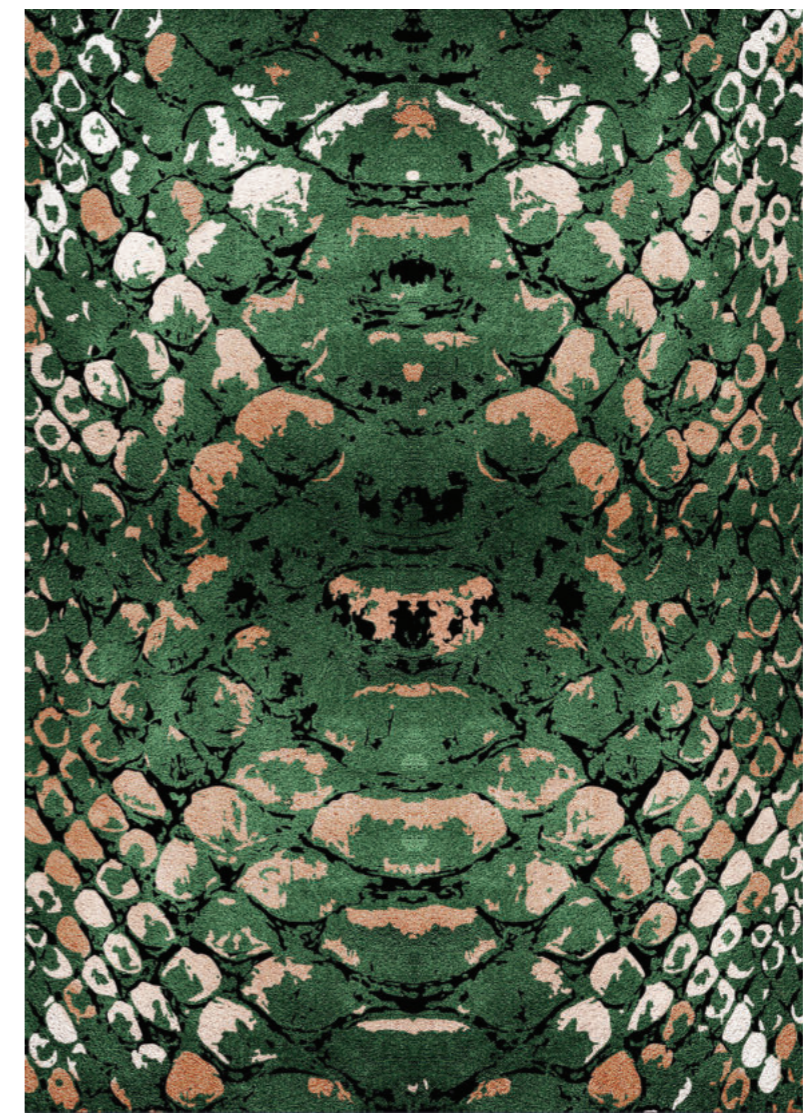
Antelope is the name we give to fabulous animals that are wild and hard to catch. There are 91 species being Impala the most famous ones. Honoring this symbology, the ANTELOPE geometric rug is ideal to bring magic to your projects.



REPTILUS Rug, DALYAN Dining Chair by BRABBU and AMIK Table Light by BRABBU

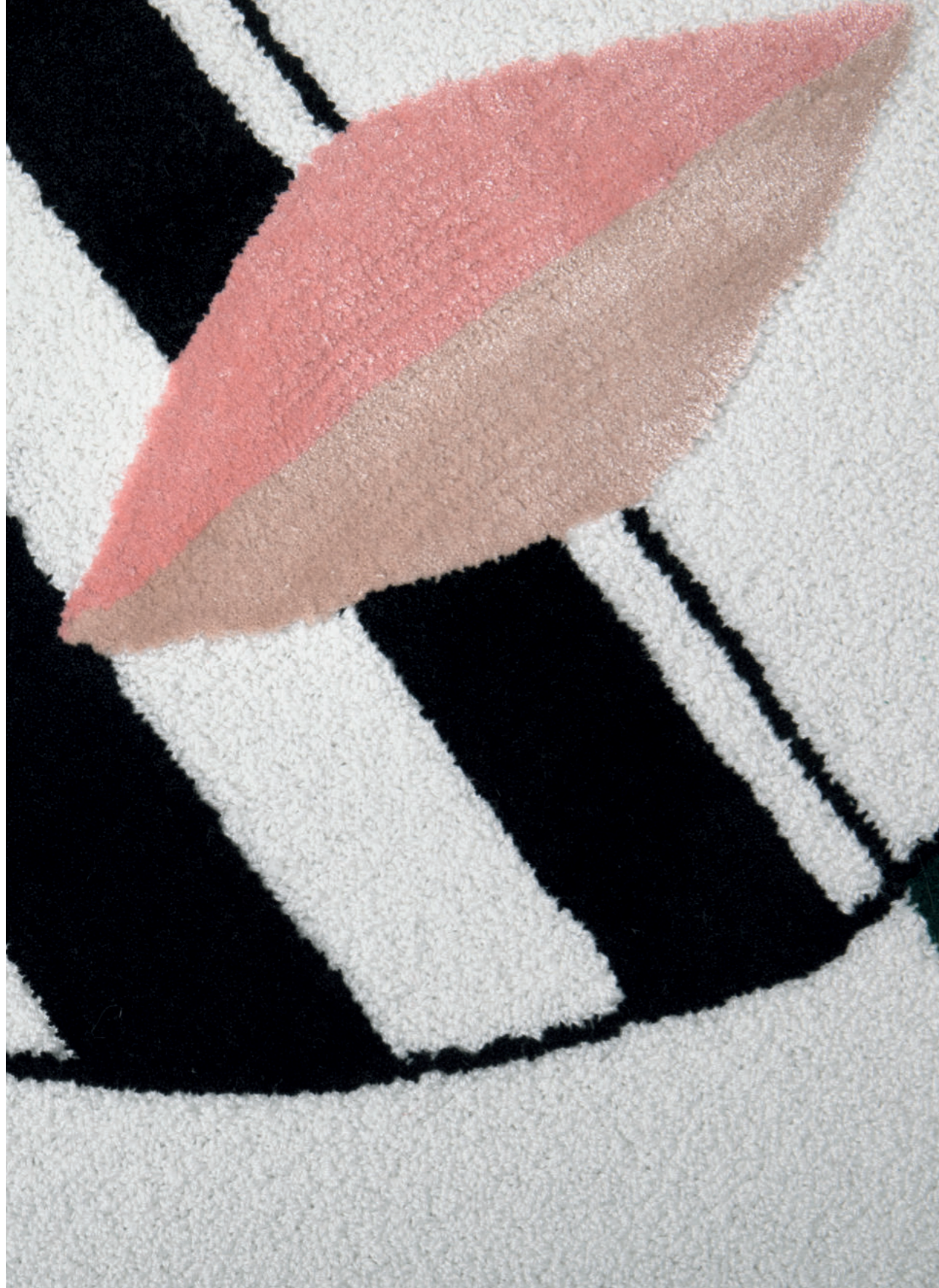
REPTILUS

BOTANICAL COLLECTION



Dimensions:
200 x 300cm | 78,74" x 118,11" / 300 x 450cm | 118,11" x 177,17"
400 x 600cm | 157,48" x 236,22" / 600 x 800cm | 236,22" x 314,96"
*Custom dimensions upon request
Materials and Techniques: Hand-tufted, Overtufting | Natural Wool, Botanical Silk

REPTILUS is a hand-tufted and overtufting rug, made of natural wool and botanical silk that is easy to combine in every space and brings the strength of nature to your home.



OSCAR RUG
GEOMETRIC COLLECTION



Dimensions:

Rectangular:

200 x 300cm | 78,74" x 118,11"
300 x 450cm | 118,11" x 177,17"
400 x 600cm | 157,48" x 236,22"
600 x 800cm | 236,22" x 314,96"

Round:

Diam. 200cm | 78,74"

Runner:

W 115cm | 45,28"

*Custom dimensions upon request

Materials and Techniques: Hand-tufted, Overtufting, Carving | Natural Wool, Botanical Silk

Oscar is the Masculine representation of the classical canons of ancient Greece. A rug with cubist language that refers us to a half-hybrid figure because at that time the canons of the human body were represented in a universal way.



SPIRIT Rug

SPIRIT

STUDIO COLLECTION



Dimensions:

200 x 300cm | 78,74" x 118,11" / 300 x 450cm | 118,11" x 177,17"
400 x 600cm | 157,48" x 236,22" / 600 x 800cm | 236,22" x 314,96"
*Custom dimensions upon request

Materials and Techniques: Hand-tufted, Overtufting | Natural Wool, Botanical Silk

SPIRIT translates the forces of nature into communion with the strength of spirit.
A hand-tufted and overtufting rug made with Natural Wool and Botanical Silk.



FOIL RUG

GEOMETRIC COLLECTION



Dimensions:

Rectangular:

200 x 300cm | 78,74" x 118,11"
300 x 450cm | 118,11" x 177,17"
400 x 600cm | 157,48" x 236,22"
600 x 800cm | 236,22" x 314,96"

Round:

Diam. 200cm | 78,74"

*Custom dimensions upon request

Materials and Techniques: Hand-tufted, Carving | Botanical Silk

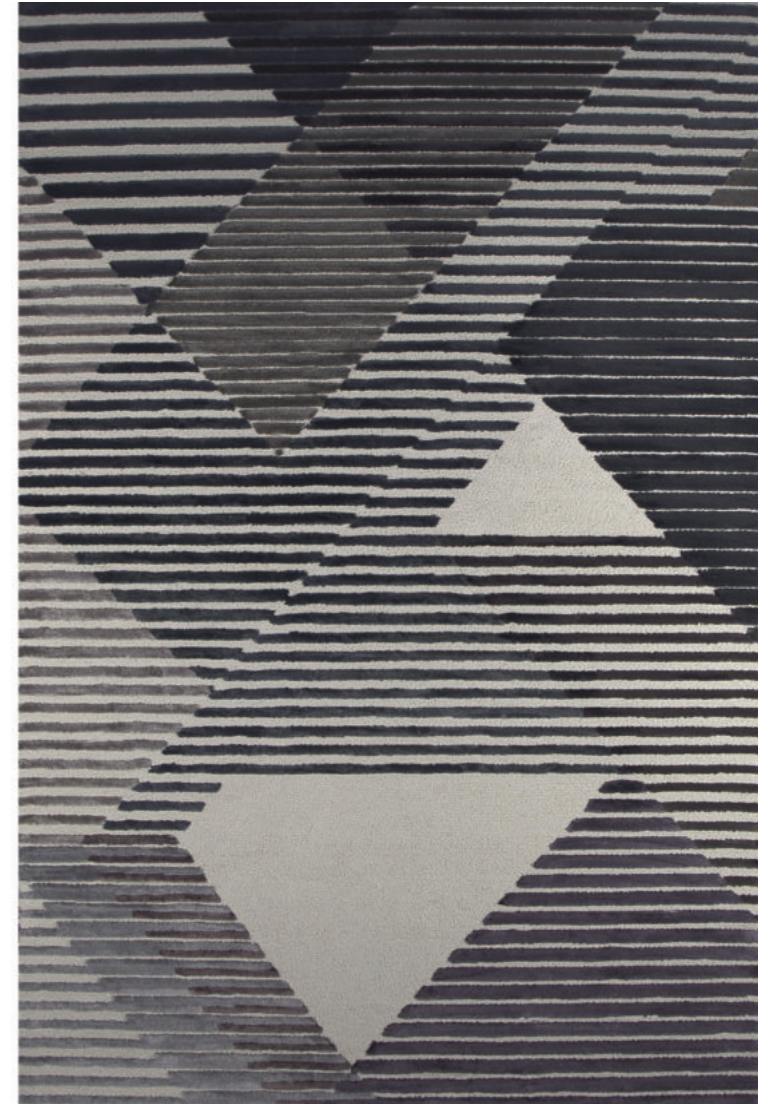
FOIL rug is a handmade rug with a geometric and unusual design, ready to make the difference in interior design. A Botanical Silk rug that combines neutral tones, geometric shapes and colored intersections.



AIR Rug and NAU Sofa by BRABBU

AIR

GEOMETRIC COLLECTION

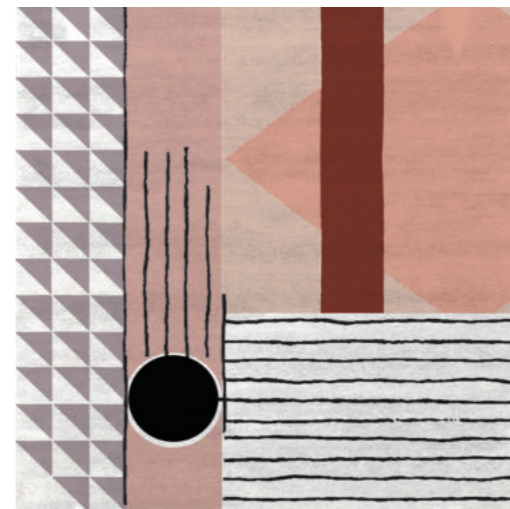


Dimensions:

200 x 300cm | 78,74" x 118,11" / 300 x 450cm | 118,11" x 177,17"
400 x 600cm | 157,48" x 236,22" / 600 x 800cm | 236,22" x 314,96"
*Custom dimensions upon request

Materials and Techniques: Hand-tufted, Overtufting, Carving | Natural Wool, Botanical Silk

Air rug is a triumph of geometric patterns and straight lines. Using three different techniques, hand-tufted, overtufting, and carving, Air rug is made with the noblest materials - Natural Wool and Botanical Silk.



SIMBA RUG
GEOMETRIC COLLECTION

Dimensions:
Rectangular:
 200 x 300cm | 78,74" x 118,11"
 300 x 450cm | 118,11" x 177,17"
 400 x 600cm | 157,48" x 236,22"
 600 x 800cm | 236,22" x 314,96"
Square:
 200 x 200cm | 78,74" x 78,74"
Runner:
 W 115cm | 45,28"

*Custom dimensions upon request
Materials and Techniques: Hand-tufted, Loop, Overtufting, Carving | Natural Wool, Botanical Silk

With a very uniform palette of colors and using three different techniques, hand-tufted, loop and cut, SIMBA stands out for the harmony between different elements, a perfect match between the rigid shapes and the curves.



BAUHAU Rug, MARCO Dining Chair by Essential Home

BAUHAU

GEOMETRIC COLLECTION



Dimensions:
200 x 300cm | 78,74" x 118,11" / 300 x 450cm | 118,11" x 177,17"
400 x 600cm | 157,48" x 236,22" / 600 x 800cm | 236,22" x 314,96"
*Custom dimensions upon request
Materials and Techniques: Hand-tufted, Loop | Visrayon

A journey through the history of the Bauhaus is style, modernity, and ideology, which can be your living room rug. A high-end rug full of history made with noble materials and sophisticated techniques.



DÊCO RUG
NEUTRAL COLLECTION



Dimensions:
Rectangular: 211 x 300cm | 83,07" x 78,74"
Square: 200 x 200cm | 78,74" x 78,74"
Runner: W 115cm | 45,28"

*Custom dimensions upon request
Materials and Techniques: Hand-tufted | Natural Wool, Botanical Silk

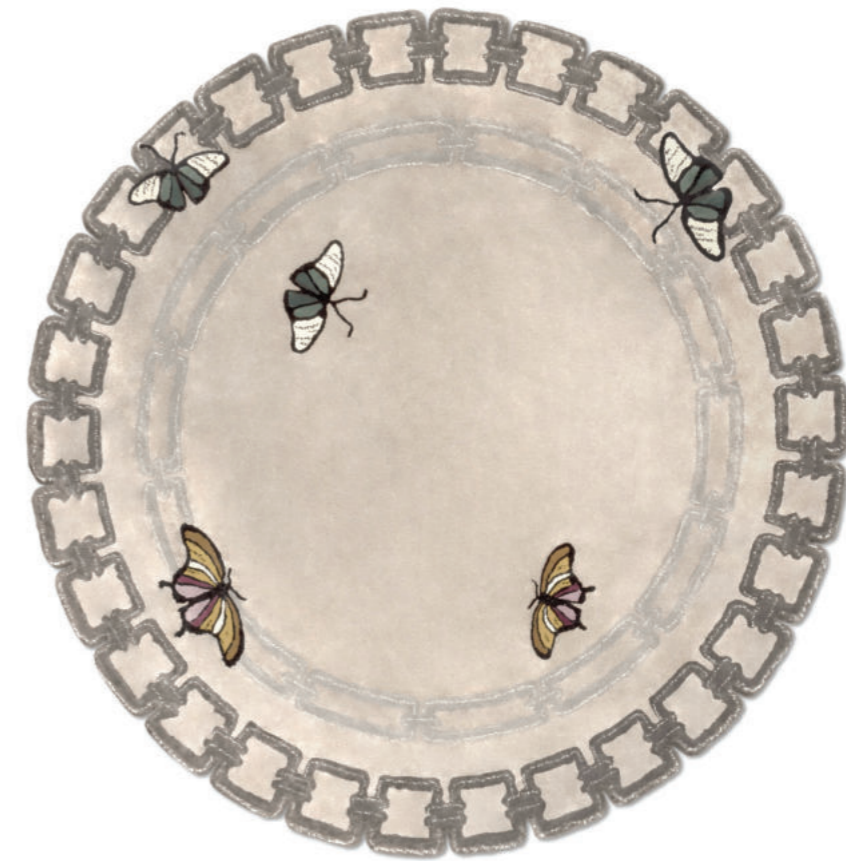
Rug'Society created the DÊCO rug, which represents the neutral collection in the best way possible. A handmade rug full of glamour and sophistication, with an unusual shape and the addition of fringes.



METAMORPHOSIS Rug and NAICCA Pendant Light by BRABBU

METAMORPHOSIS

NEUTRAL COLLECTION



Dimensions:

Diam. 200cm | 78,74"

*Custom dimensions upon request

Materials and Techniques: Hand-tufted | Botanical Silk

Metamorphosis literally means transformation or transforming; thus, this round modern rug is going to transform any room it goes to. METAMORPHOSIS is a 100% hand-tufted rug in botanical silk that promises to bring flora power into your home.



APOLLO Rug, ARDARA II Console by BRABBU, ARUNA Wall Light and KAYAN Mirror by BRABBU

APOLLO

NEUTRAL COLLECTION

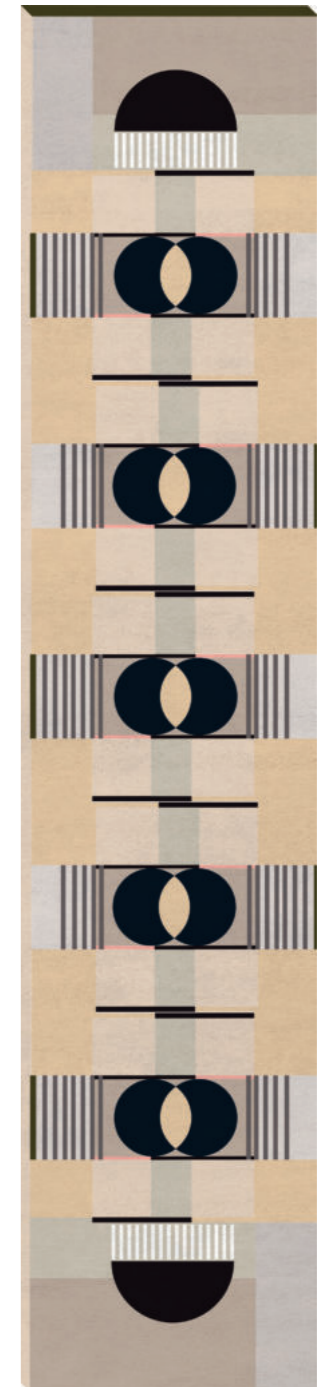


Dimensions:
200 x 300cm | 78,74" x 118,11" / 300 x 450cm | 118,11" x 177,17"
400 x 600cm | 157,48" x 236,22" / 600 x 800cm | 236,22" x 314,96"
*Custom dimensions upon request
Materials and Techniques: Hand-tufted | Lucca

The strength of this Apollo God is a remarkable feature from where APOLLO modern rug was born: a strong, powerful, and 100% handmade and hand-tufted rug that transforms the comfort and beauty of your project.



ISAAC RUG
GEOMETRIC COLLECTION



Dimensions:

| | |
|--|---|
| Rectangular: 200 x 300cm 78,74" x 118,11" 300 x 450cm 118,11" x 177,17" 400 x 600cm 157,48" x 236,22" 600 x 800cm 236,22" x 314,96" | Square: 200 x 200cm 78,74" x 78,74" |
| | Runner: W 115cm 45,28" |

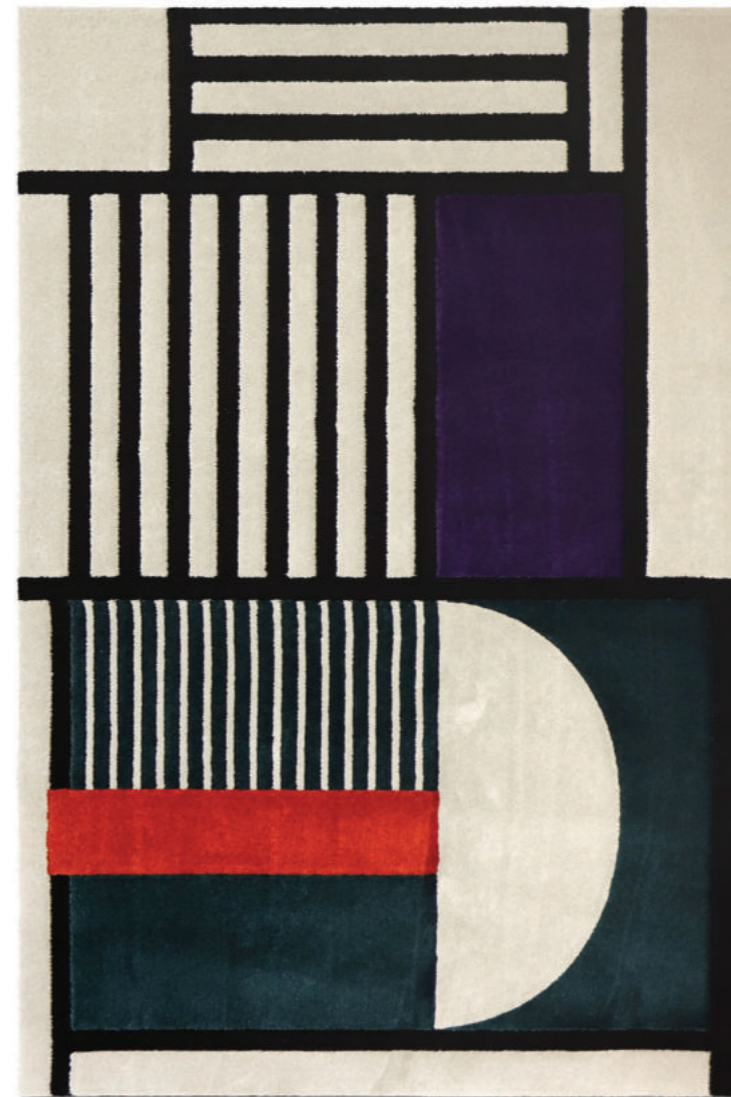
*Custom dimensions upon request
Materials and Techniques: Hand-tufted | Natural Wool, Botanical Silk

A rug with botanical silk and natural wool, where are present four different techniques, giving the rug a three-dimensional feel that makes it stand out in every room.



PRISMA I Rug, SHINTO II Console by BRABBU

PRISMA I
GEOMETRIC COLLECTION



Dimensions:

200 x 300cm | 78,74" x 118,11" / 300 x 450cm | 118,11" x 177,17"
400 x 600cm | 157,48" x 236,22" / 600 x 800cm | 236,22" x 314,96"
*Custom dimensions upon request

Materials and Techniques: Hand-tufted, Overtufting | Natural Wool, Botanical Silk

Prisma I rug is an inspiration in the conception of geometric forms with a modern appearance by neutral tones and overlays of forms. A hand-tufted rug with a modern design inspired by the classic Bauhaus shapes.



MERMAID Rug, KAFE Sideboard by Caffelatte, ROBIN Mirror by Boca do Lobo and NAICCA Pendant Light by BRABBU

MERMAID

LOUNGE RUGS COLLECTION

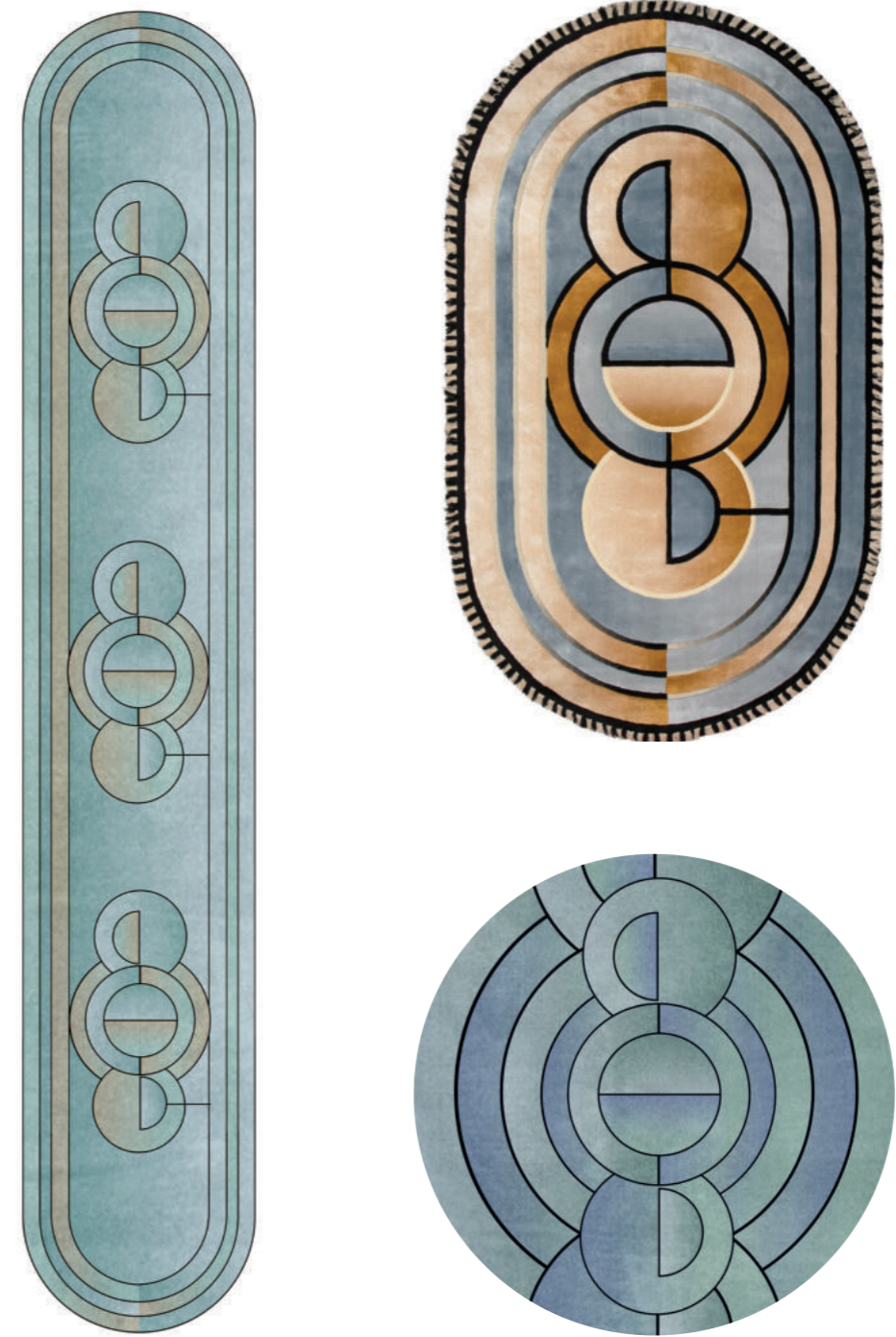


Dimensions:
350 X 450cm | 137,79" x 177,17"
*Custom dimensions upon request
Materials and Techniques: Hand-tufted | Botanical Silk, Lurex

MERMAID Rug is inspired by the feminine representation of the sea and its delicacy. An elegant and 100% handmade rug, made with botanical silk and lurex, that transforms the comfort and beauty of your project.



KLEOPATRA LOUNGE RUG
LOUNGE COLLECTION



Dimensions:
Rectangular: 220 x 380cm | 86,6" x 149,6"
Runner: W 115cm | 45,28"
Round: Diam. 200cm | 78,74"

*Custom dimensions upon request
Materials and Techniques: Hand-tufted | Botanical Silk, New Zealand Wool

KLEOPATRA, a rug inspired by ancient Egypt, not only for the chromatic choice but also for the linear and rigid graphics that served as the basis of language throughout history. The rug is a 100% handmade in Botanical Silk.



LUCY Rug, NAICCA Chandelier by BRABBU and AGRA Bar Table by BRABBU

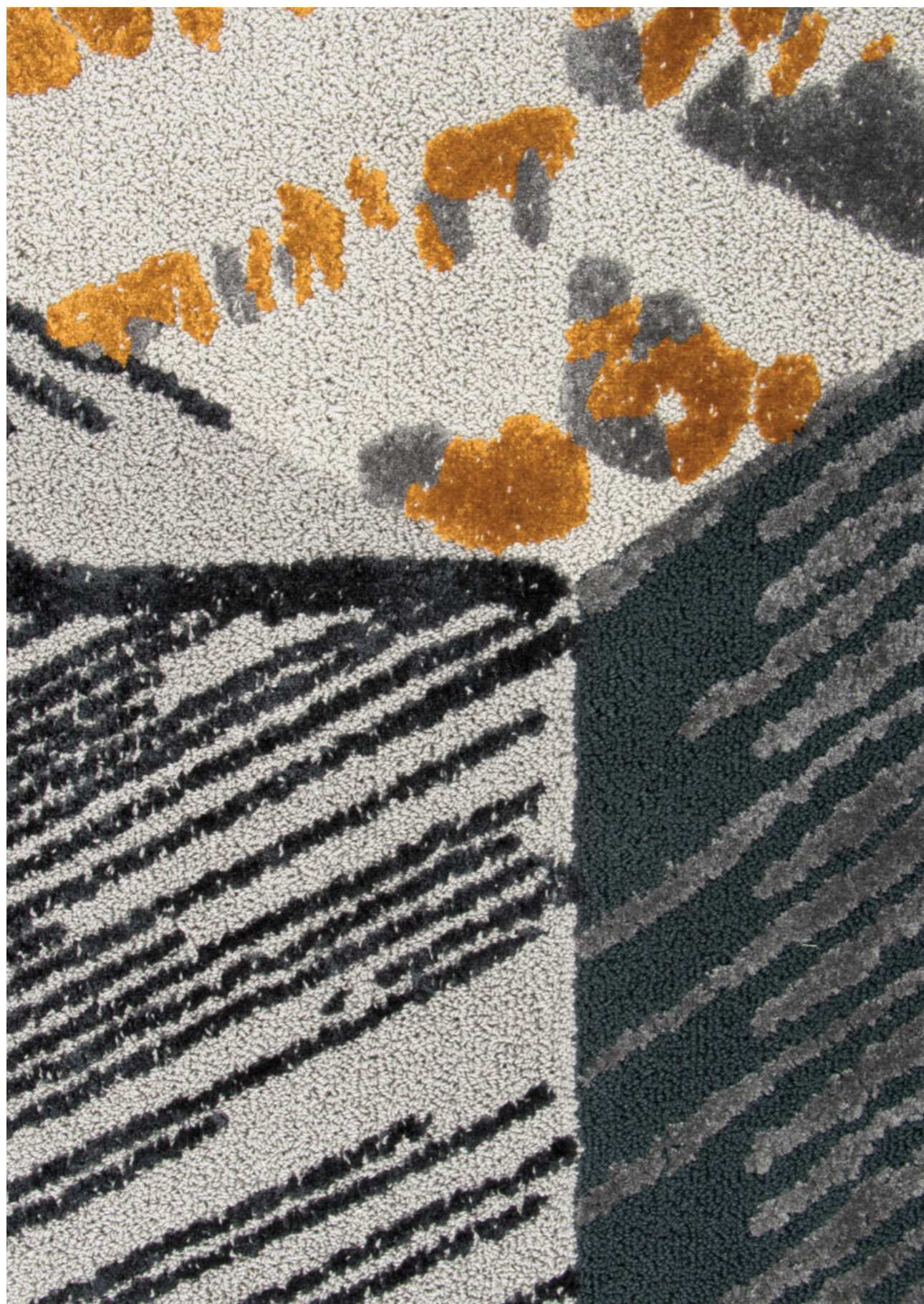
LUCY

LOUNGE RUGS COLLECTION

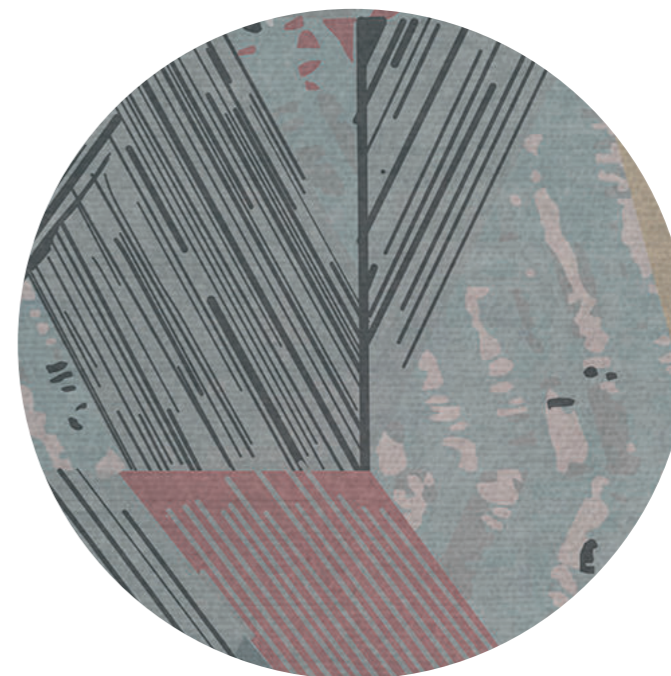


Dimensions:
227 X 400cm | 89,37" x 157,48"
*Custom dimensions upon request
Materials and Techniques: Hand-tufted | Natural Wool, Botanical Silk

With unique lines and unmistakable shapes, LUCY is a modern rug inspired by geometrical shapes and shades of pastel pink that make this astonishing lounge rug.



XISTO RUG
GEOMETRIC COLLECTION



Dimensions:

Rectangular:

200 x 300cm | 78,74" x 118,11"
300 x 450cm | 118,11" x 177,17"
400 x 600cm | 157,48" x 236,22"
600 x 800cm | 236,22" x 314,96"

Round:

Diam. 200cm | 78,74"

*Custom dimensions upon request

Materials and Techniques: Hand-tufted, Overtufting | Natural Wool, Botanical Silk

XISTO is inspired by various types of metamorphic rocks strongly laminated. A 100% handmade product that combines the use of hand-tufted and overtufting techniques with different materials - natural wool and botanical silk.



WEST Rug and AGRA Console by BRABBU

WEST GEOMETRIC COLLECTION

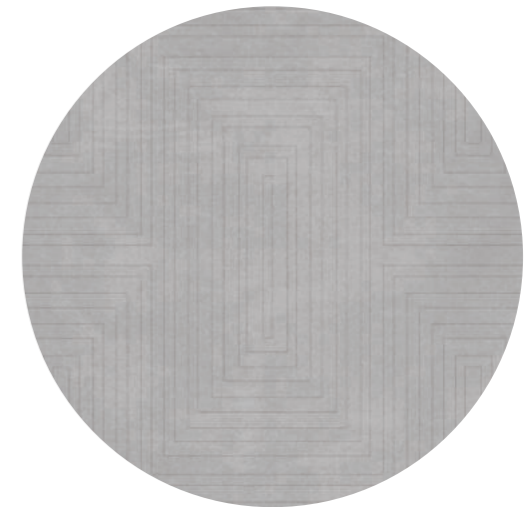


Dimensions:
200 x 300cm | 78,74" x 118,11" / 300 x 450cm | 118,11" x 177,17"
400 x 600cm | 157,48" x 236,22" / 600 x 800cm | 236,22" x 314,96"
*Custom dimensions upon request
Materials and Techniques: Hand-tufted, Overtufting, Carving | Natural Wool, Botanical Silk

With a modern rug design, WEST combines three different techniques, hand-tufted, overtufting and carving, and is a 100% handmade rug made with natural wool and botanical silk.



WHITE GARDEN RUG
NEUTRAL COLLECTION



Dimensions:

Rectangular:

200 x 300cm | 78,74" x 118,11"
300 x 450cm | 118,11" x 177,17"
400 x 600cm | 157,48" x 236,22"
600 x 800cm | 236,22" x 314,96"

Round:

Diam. 200cm | 78,74"

Runner:

W 115cm | 45,28"

*Custom dimensions upon request

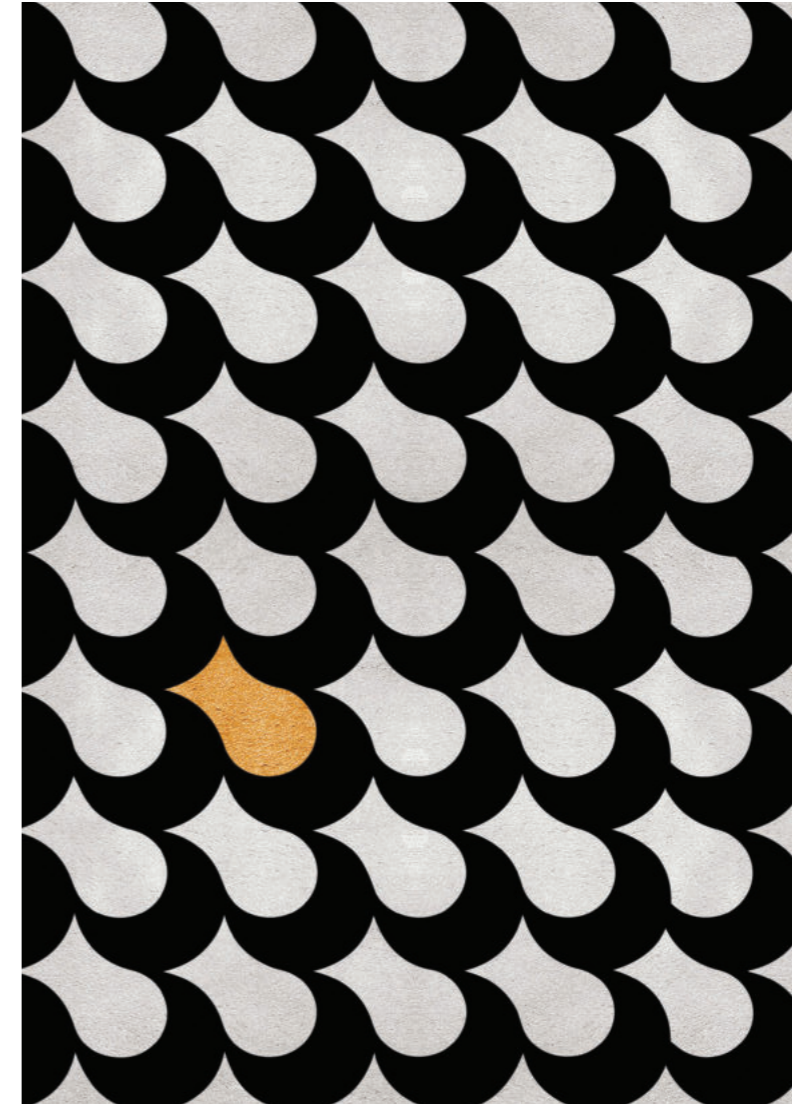
Materials and Techniques: Hand-tufted | Botanical Silk

WHITE GARDEN is a square-shaped rug, which with its shades of white, is suitable for any environment. A 100% handmade rug made with botanical silk that transmits us comfort and a warm feeling.



ADLER Rug, MANUKA Side Table by BRABBU, ELK Armchair by BRABBU and NANCY Wall by DelightFULL

ADLER
GEOMETRIC COLLECTION



Dimensions:
 200 x 300cm | 78,74" x 118,11" / 300 x 450cm | 118,11" x 177,17"
 400 x 600cm | 157,48" x 236,22" / 600 x 800cm | 236,22" x 314,96"
 *Custom dimensions upon request
Materials and Techniques: Hand-tufted | Natural Wool, Botanical Silk

ADLER is a hand-tufted rug, made with natural wool and botanical silk, and it's proof that we can have a piece of art into our spaces.



JOH RUG
 GEOMETRIC COLLECTION



Dimensions:

| | |
|---------------------------------|----------------------|
| Rectangular: | Round: |
| 200 x 300cm 78,74" x 118,11" | Diam. 200cm 78,74" |
| 300 x 450cm 118,11" x 177,17" | |
| 400 x 600cm 157,48" x 236,22" | Runner: |
| 600 x 800cm 236,22" x 314,96" | W 115cm 45,28" |

*Custom dimensions upon request

Materials and Techniques: Hand-tufted, Overtufting, Carving | Botanical Silk

Rug design inspired by the conjugation of light and shadows with different perspectives of relief colors. The reference of wood brown shades makes this rug the perfect Mid-Century product.



MÖOS Rug, OTTER Ottoman by BRABBU, CYRUS Floor Light by BRABBU and CAY Square Mirror by BRABBU

MÖOS

NEUTRAL COLLECTION



Dimensions:

200 x 300cm | 78,74" x 118,11" / 300 x 450cm | 118,11" x 177,17"
400 x 600cm | 157,48" x 236,22" / 600 x 800cm | 236,22" x 314,96"

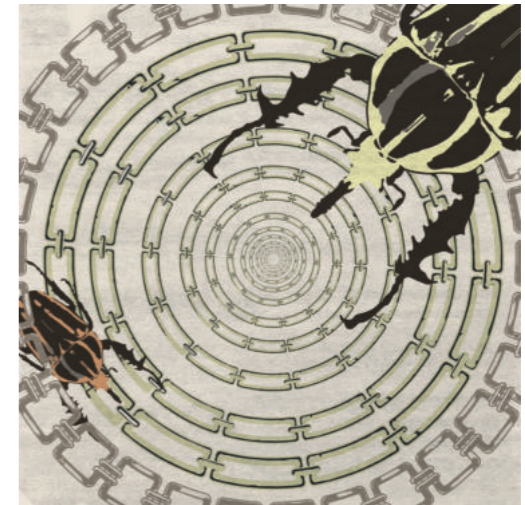
*Custom dimensions upon request

Materials and Techniques: Hand-tufted, Overtufting | Natural Wool, Botanical Silk

Möos is German for swamp or moss. A 100% handmade rug made with Natural Wool and Botanical Silk, which promises to make you think your projects are breathing.



GOLDEN BUGS RUG
NEUTRAL COLLECTION



Dimensions:
Suqare: 200 x 200cm | 78,74" x 78,74"
Round: Diam. 200cm | 78,74"
Runner: W 115cm | 45,28"

*Custom dimensions upon request
Materials and Techniques: Hand-tufted | Botanical Silk

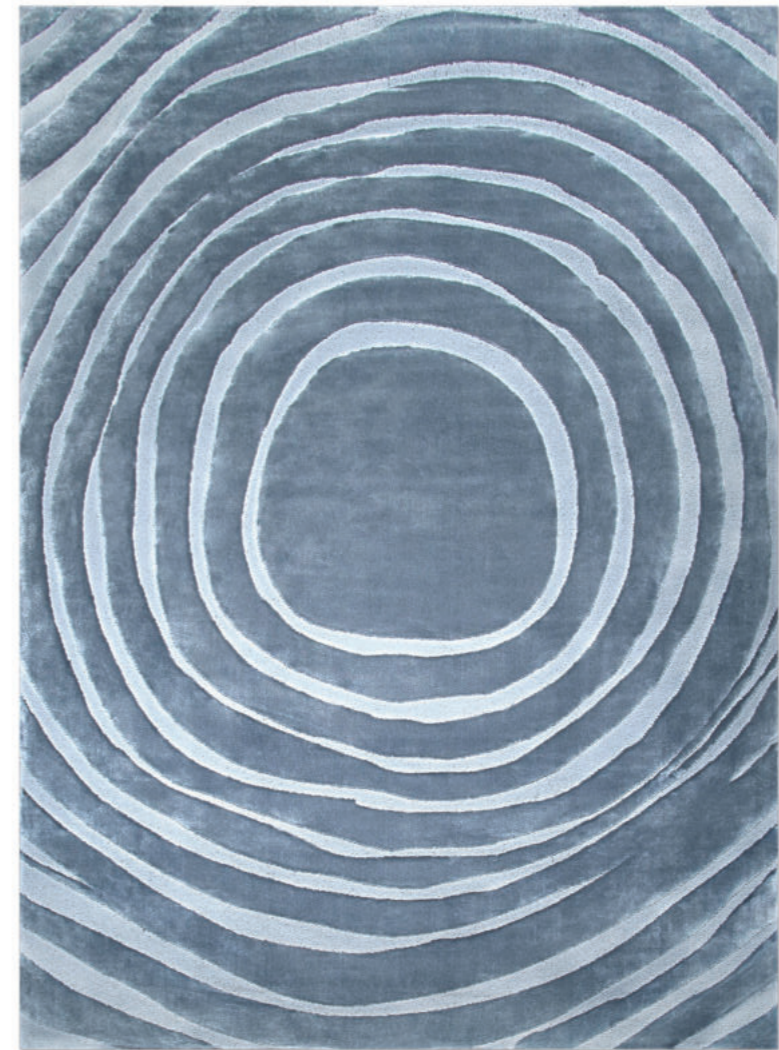
Inspired by the relationship between bugs and spirituality, GOLDEN BUGS is a 100% botanical silk rug that was created to conceive the perfect harmony in your interior design, with a touch of mother earth.



EYE Rug, HUDSON Armchair by Essential Home and BOTTI Side Table by Essential Home

EYE

NEUTRAL COLLECTION



Dimensions:

200 x 300cm | 78,74" x 118,11" / 300 x 450cm | 118,11" x 177,17"
400 x 600cm | 157,48" x 236,22" / 600 x 800cm | 236,22" x 314,96"

*Custom dimensions upon request

Materials and Techniques: Hand-tufted, Overtufting, Carving | Natural Wool, Botanical Silk

Eyes are the window to the soul. By bringing this rug into your home, will definitely make everyone fall in love with it and elevate the design in your home. A 100% handmade rug that combines the use of hand-tufted, cut and loop techniques with different materials - Natural Wool and Botanical Silk.



AMAZON RUG
BOTANICAL COLLECTION



Dimensions:

Rectangular:

200 x 300cm | 78,74" x 118,11"
300 x 450cm | 118,11" x 177,17"
400 x 600cm | 157,48" x 236,22"
600 x 800cm | 236,22" x 314,96"

Square:

200 x 200cm | 78,74" x 78,74"

Runner:

W 115cm | 45,28"

*Custom dimensions upon request

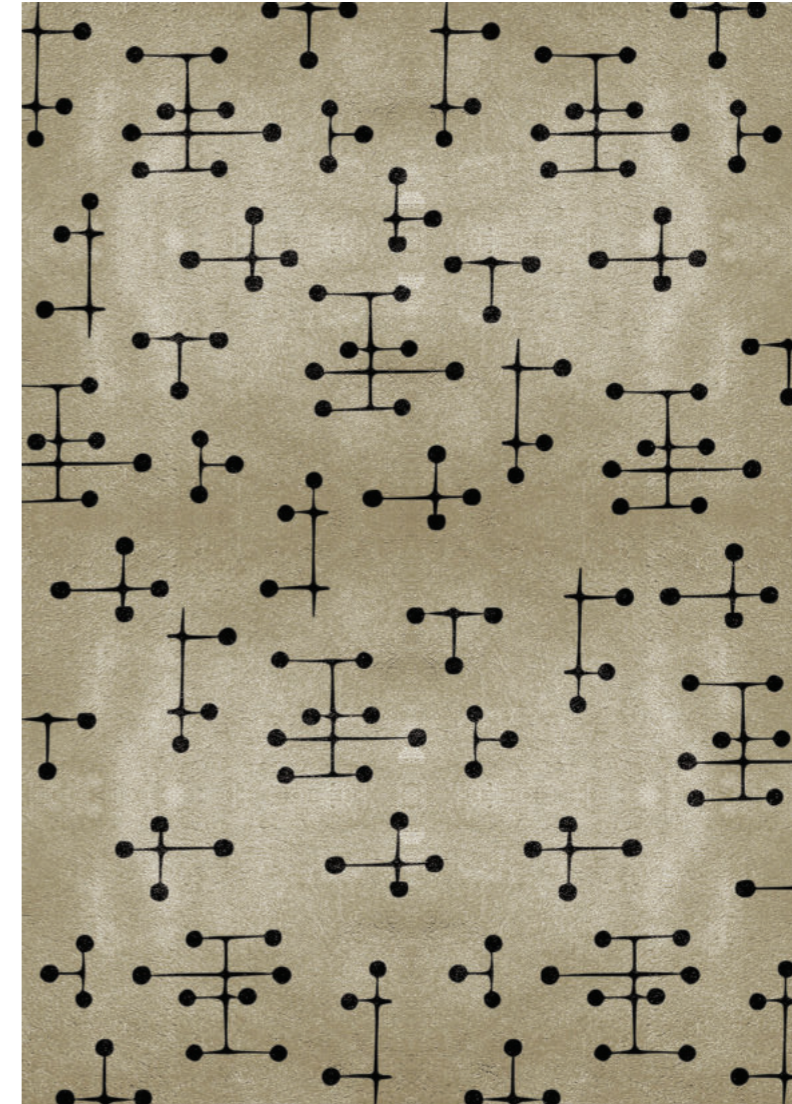
Materials and Techniques: Hand-tufted, Overtufting | Natural Wool, Botanical Silk

Inspired by the life and the greatness of the Amazon Forest, AMAZON rug was created. A strong, green-colored rug made from hand-tufted and over tufting techniques, and natural wool and botanical silk.



UMLAZA Rug, LÁTZA Center Table by BRABBU and FITZROY Corner Sofa by BRABBU

UMLAZA NEUTRAL COLLECTION



Dimensions:

200 x 300cm | 78,74" x 118,11" / 300 x 450cm | 118,11" x 177,17"
400 x 600cm | 157,48" x 236,22" / 600 x 800cm | 236,22" x 314,96"

*Custom dimensions upon request

Materials and Techniques: Hand-tufted, Overtufting, Carving | Natural Wool, Botanical Silk

UMLAZA is a handmade rug that was born by the inspiration of the constellations that combines the use of hand-tufted, overtufting, and carving techniques with different materials - Natural Wool and Botanical Silk.



MERFILUS RUG
BOTANICAL COLLECTION



Dimensions:

Rectangular:

200 x 300cm | 78,74" x 118,11"
300 x 450cm | 118,11" x 177,17"
400 x 600cm | 157,48" x 236,22"
600 x 800cm | 236,22" x 314,96"

Square:

200 x 200cm | 78,74" x 78,74"

Runner:

W 115cm | 45,28"

*Custom dimensions upon request

Materials and Techniques: Hand-tufted, Overtufting | Natural Wool, Botanical Silk

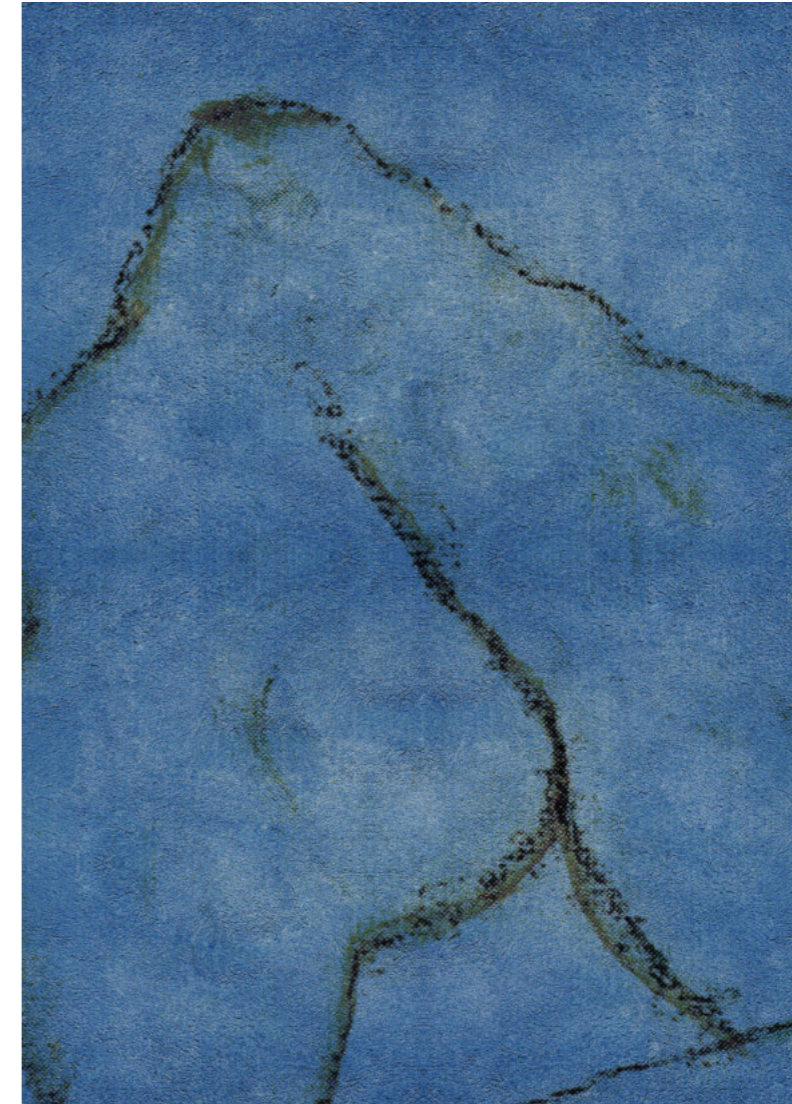
MERFILUS rug was designed with a strong connection with the water element to give a calm vision to any interior. Transform your home in a stress-free place with this 100% handmade rug made with Botanical Silk and Natural Wool.



MIRÓ Rug, WALES Bench by BRABBU and CYRUS DOUBLE II XL Wall Light by BRABBU

MIRÓ

NEUTRAL COLLECTION



Dimensions:
200 x 300cm | 78,74" x 118,11" / 300 x 450cm | 118,11" x 177,17"
400 x 600cm | 157,48" x 236,22" / 600 x 800cm | 236,22" x 314,96"
*Custom dimensions upon request
Materials and Techniques: Hand-tufted | Botanical Silk

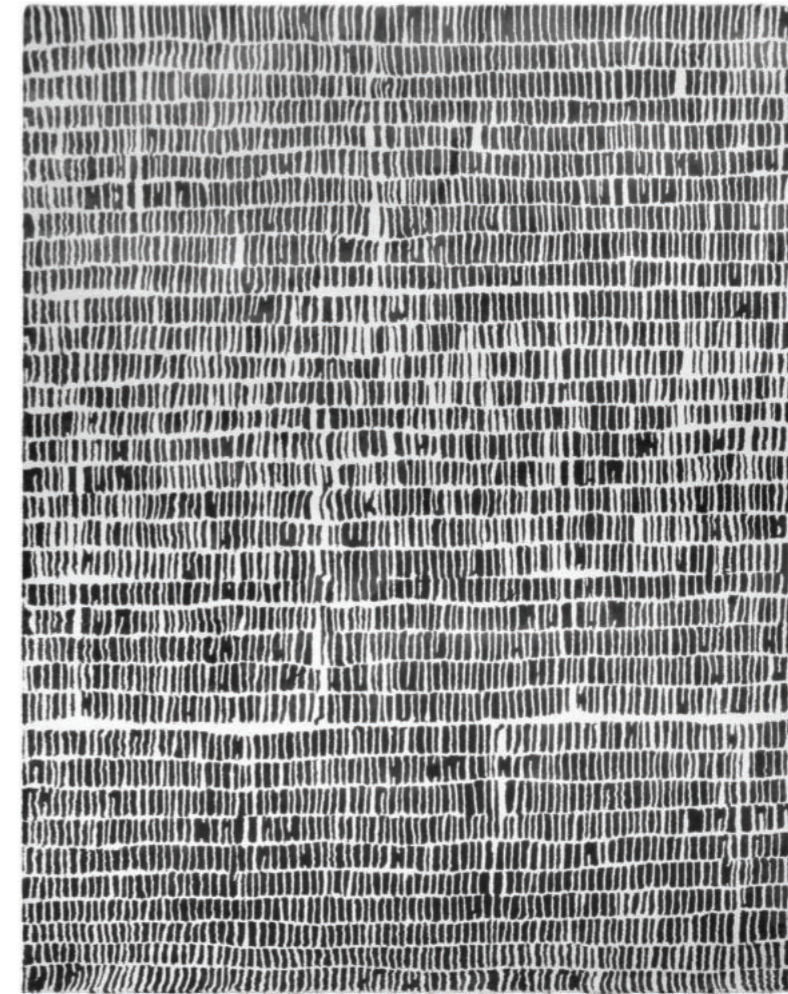
With balance simplicity and imaginative elements, MIRÓ is an exclusive rug, made with Natural Wool and Botanical Silk, which is perfect to give some peaceful elements.



COLL Rug, DARIAN Vanity Cabinet by Maison Valentina, DARIAN Bathtub by Maison Valentina, YOHO Stool by BRABBU, NEIL Suspension and TURNER Wall by DelightFULL

COLL

NEUTRAL COLLECTION



Dimensions:

200 x 300cm | 78,74" x 118,11" / 300 x 450cm | 118,11" x 177,17"
 400 x 600cm | 157,48" x 236,22" / 600 x 800cm | 236,22" x 314,96"

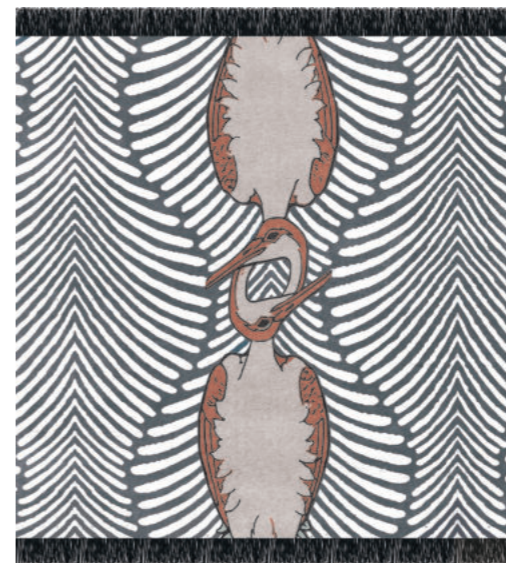
*Custom dimensions upon request

Materials and Techniques: Hand-tufted, Loop | Natural Wool, Botanical Silk

COLL rug, with a simple rug design and minimalist style, combines the loop and hand-tufted techniques with natural wool and botanical silk.



COUPLE RUG
BOTANICAL COLLECTION



Dimensions:

Rectangular:

200 x 300cm | 78,74" x 118,11"
300 x 450cm | 118,11" x 177,17"
400 x 600cm | 157,48" x 236,22"
600 x 800cm | 236,22" x 314,96"

Square:

200 x 200cm | 78,74" x 78,74"

Runner:

W 115cm | 45,28"

*Custom dimensions upon request

Materials and Techniques: Hand-tufted, Overtufting | Natural Wool, Botanical Silk

COUPLE brings a certain aura of romanticism, mystery, and magic to any ambience. A 100% handmade rug that combines the hand-tufted and overtufting techniques with the noblest materials: Natural Wool and Botanical Silk.



VASE Rug, NOAKI Stool by BRABBU

VASE

CLASSIC COLLECTION



Dimensions:

200 x 300cm | 78,74" x 118,11" / 300 x 450cm | 118,11" x 177,17"
400 x 600cm | 157,48" x 236,22" / 600 x 800cm | 236,22" x 314,96"
*Custom dimensions upon request

Materials and Techniques: Hand-tufted, Overtufting, Carving | Natural Wool, Botanical Silk

The simple design and the basic colors, transform this 100% handmade rug on a desired tapestry. With Natural Wool and Botanical Silk, VASE is a new rug that applies three different techniques: Hand-tufted, Overtufting, and Carving.



Snake Rug, LATZA Side Table by BRABBU and COMO Armchair by BRABBU

Snake

BOTANICAL COLLECTION



Dimensions:
300 x 450cm | 118,11" x 177,17" / 400 x 600cm | 157,48" x 236,22" / 600 x 800cm | 236,22" x 314,96"
*Custom dimensions upon request
Materials and Techniques: Hand-tufted / Natural Wool, Botanical Silk

The snake is one of the oldest and most well-known mythological symbols, being present in different cultures with similar meanings. The Snake rug design is a tribute to this majestic animal and to the meaning it was endowed with in the past, which it still possesses. A 100% handmade rug that combines the use of hand-tufted and overtufting techniques with different materials - natural wool and botanical silk.



REDLEH RUG
CLASSIC COLLECTION



Dimensions:

Rectangular:

200 x 300cm | 78,74" x 118,11"
 300 x 450cm | 118,11" x 177,17"
 400 x 600cm | 157,48" x 236,22"
 600 x 800cm | 236,22" x 314,96"

Square:

200 x 200cm | 78,74" x 78,74"

Runner:

W 115cm | 45,28"

*Custom dimensions upon request

Materials and Techniques: Hand-tufted | Natural Wool, Botanical Silk

REDLEH is 100% handmade and hand-tufted rug made with Natural Wool and Botanical Silk, that promises to bring to the interiors the power, strength, nobility and good luck of the dragon.



TERRAZZO Rug and WALES Bench by BRABBU

TERRAZZO

NEUTRAL COLLECTION



Dimensions:
200 x 300cm | 78,74" x 118,11" / 300 x 450cm | 118,11" x 177,17"
400 x 600cm | 157,48" x 236,22" / 600 x 800cm | 236,22" x 314,96"
*Custom dimensions upon request
Materials and Techniques: Hand-tufted / Botanical Silk

Terrazzo, an Italian flooring composite, is one of the biggest current trends in fashion and interior design, thanks to its bespoke and unreplicable look. Rug'Society is proud of bringing this craze to the tapestry world with our TERRAZZO Rug, one of the most trendy rugs and choices to bring any ambiance together.



AGATHA

BOTANICAL COLLECTION



Dimensions:

200 x 300cm | 78,74" x 118,11" / 300 x 450cm | 118,11" x 177,17"
400 x 600cm | 157,48" x 236,22" / 600 x 800cm | 236,22" x 314,96"
*Custom dimensions upon request

Materials and Techniques: Hand-tufted, Overtufting | Natural Wool, Botanical Silk

Agata is a type of quartz, known for irregular shapes and its typical colors: grey and bluish-grey. Most agates occur like nodules in eruptive rocks and when cut, they show all their inner beauty. AGATHA modern rug was born with a strong connection with nature and the two techniques present on this luxury rug, Hand-tuft and Overtufting, enhance the beauty of this product.

URBAN COLLECTION

NEW COLLECTION



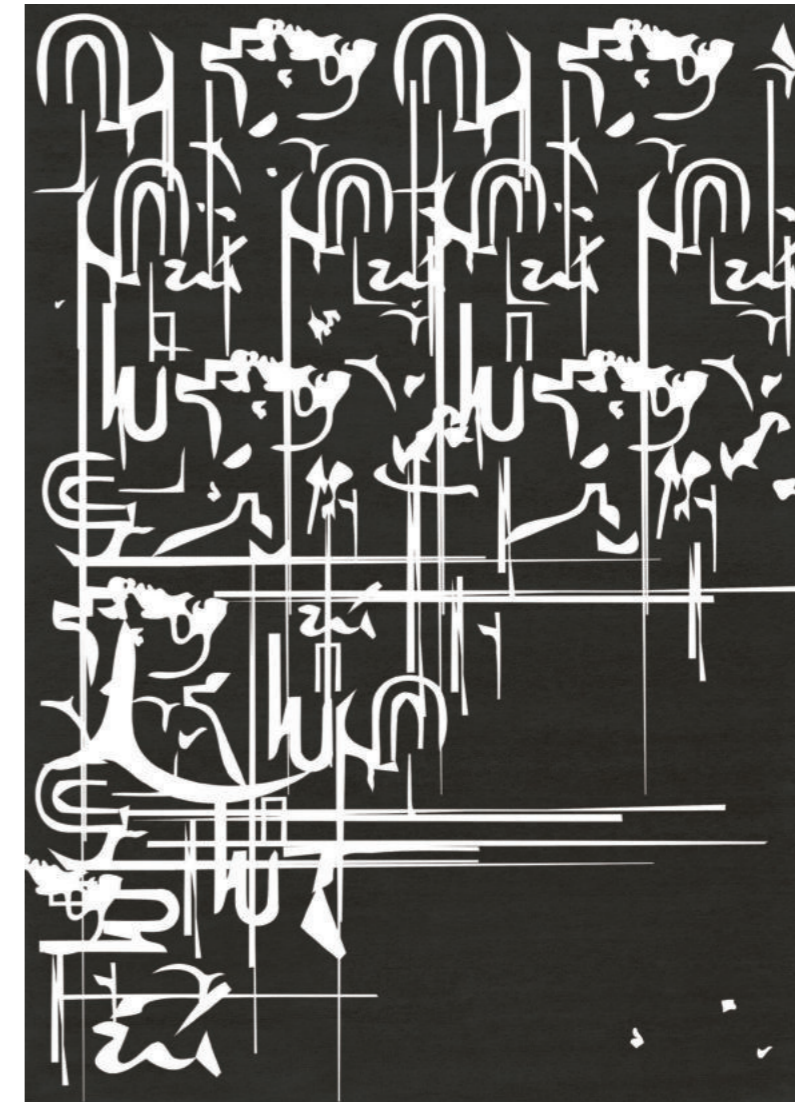
URBAN COLLECTION



BLANC INK Rug, KAAMOS Mirror by BRABBU, INFINITY Console by Boca do Lobo, SHINTO Rectangle Center Table by BRABBU and REEVES Chair by Essential Home

BLANC INK

URBAN COLLECTION



Dimensions:
 200 x 280cm | 78,74" x 110,24" / 300 x 430cm | 118,11" x 169,29"
 400 x 570cm | 157,48" x 124,41" / 600 x 850cm | 236,2" x 335,65"
 *Custom dimensions upon request
Materials and Techniques: Hand-tufted | Botanical Silk

BLANC INK is inspired in the creation of minimalistic and abstract designs. With simple lines and basic colors, this modern rug is linked to a simple way of life and practicality.



BLACK INK Rug, COLOSSEUM Console by BRABBU and CYRUS Wall Light by BRABBU

BLACK INK

URBAN COLLECTION



Dimensions:

200 x 280cm | 78,74" x 110,24" / 300 x 430cm | 118,11" x 169,29"
400 x 570cm | 157,48" x 124,41" / 600 x 850cm | 236,2" x 335,65"

*Custom dimensions upon request

Materials and Techniques: Hand-tufted | Botanical Silk

This handmade rug is the perfect option to create a mysterious and discreet look but never failing to create a statement wherever placed.



INKAHOLE Rug and BRYCE II Side Table by BRABBU

INKAHOLE
URBAN COLLECTION



Dimensions:
 200 x 280cm | 78,74" x 110,24" / 300 x 430cm | 118,11" x 169,29"
 400 x 570cm | 157,48" x 124,41" / 600 x 850cm | 236,2" x 335,65"
 *Custom dimensions upon request
Materials and Techniques: Hand-tufted | Botanical Silk

Let this rug inkahole your room. INKAHOLE rug will catch your eyes and get you tied in like a piece of art that makes a strong presence in an art gallery.



INKAGE Rug and ELLA Puff by Maison Valentina

INKAGE

URBAN COLLECTION



Dimensions:

200 x 280cm | 78,74" x 110,24" / 300 x 430cm | 118,11" x 169,29"
400 x 570cm | 157,48" x 124,41" / 600 x 850cm | 236,2" x 335,65"

*Custom dimensions upon request

Materials and Techniques: Hand-tufted | Botanical Silk

INKAGE rug is inspired in the tattoo work and the art of perpetuating a story through the skin. Like tattoos, this handmade rug will show your personality through your home design and make you feel comfortable.



INKAHOLIC Rug, BRYCE FAUX II Console by BRABBU and CYRUS Table Light by BRABBU

INKAHOLIC

URBAN COLLECTION



Dimensions:
 200 x 280cm | 78,74" x 110,24" / 300 x 430cm | 118,11" x 169,29"
 400 x 570cm | 157,48" x 124,41" / 600 x 850cm | 236,2" x 335,65"
 *Custom dimensions upon request
Materials and Techniques: Hand-tufted | Botanical Silk

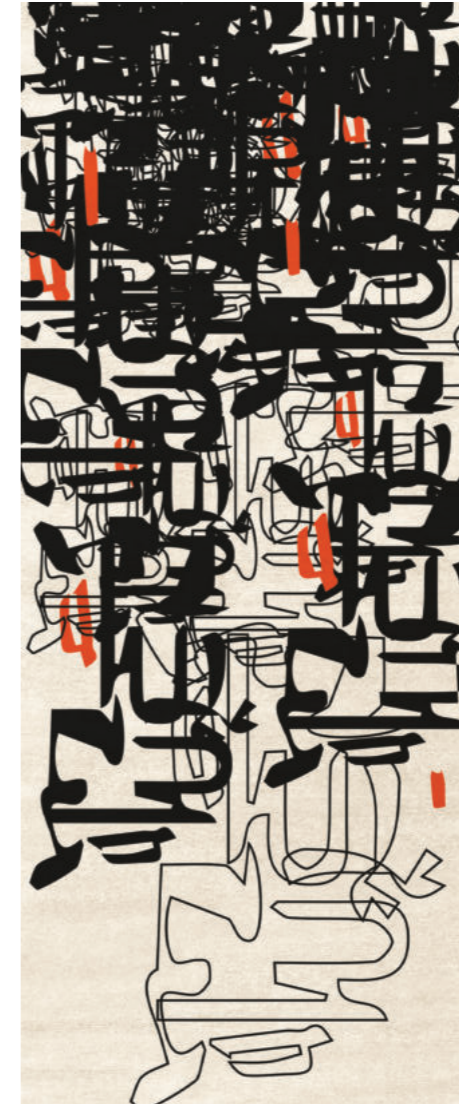
Tattoos are a form of expression of our feelings and life story. The INKAHOLIC rug was born to tribute the ones who like to express this art on the skin and take some of that expression to interior design.



INKBLIND I Rug and FITZROY Corner Sofa by BRABBU

INKBLIND I

URBAN COLLECTION



Dimensions:

300 x 730cm | 118,11" x 287,4" / 400 x 970cm | 157,48" x 381,89"
500 x 1210cm | 196,85" x 476,38" / 600 x 1450cm | 236,2" x 570,87"

*Custom dimensions upon request

Materials and Techniques: Hand-tufted | Botanical Silk

This rug is the perfect representation of the power that body arts have in modern life and the goal is to bring that power into interior design.



INKBLIND II Rug

INKBLIND II

URBAN COLLECTION



Dimensions:

300 x 730cm | 118,11" x 287,4" / 400 x 970cm | 157,48" x 381,89"
 500 x 1210cm | 196,85" x 476,38" / 600 x 1450cm | 236,2" x 570,87"
 *Custom dimensions upon request

Materials and Techniques: Hand-tufted | Botanical Silk

INKBLIND II rug is a natural rug inspired in the phenomena of one becoming more attractive toward others after receiving multiple tattoos.



RUIN Rug, and MATHENY XL Wall by DelightFULL

RUIN

URBAN COLLECTION



Dimensions:
300 x 540cm | 118,11" x 212,6" / 400 x 730cm | 157,48" x 287,4"
500 x 910cm | 196,85" x 358,27" / 600 x 1090cm | 236,2" x 429,13"
*Custom dimensions upon request
Materials and Techniques: Hand-tufted | Botanical Silk

With a neutral and simple design, RUIN rug is inspired in the beauty of the ruins and with it, brings a little of its historical importance to our home. A custom rug that will make you travel back in time.



GRAFFILOSOPHY Rug and BORNEO Single Sofa by BRABBU

GRAFFILOSOPHY

URBAN COLLECTION



Dimensions:

200 x 280cm | 78,74" x 110,24" / 300 x 430cm | 118,11" x 169,29"
 400 x 570cm | 157,48" x 124,41" / 600 x 850cm | 236,2" x 335,65"

*Custom dimensions upon request

Materials and Techniques: Hand-tufted | Botanical Silk

Graffilosophy is the philosophy depicted through street art of graffiti.
 The design of GRAFFILOSOPHY rug is the perfect representation of how to
 express feelings through art.



GRAFFINESQUE Rug, and NUI Stool by Maison Valentina

GRAFFINESQUE

URBAN COLLECTION



Dimensions:

200 x 280cm | 78,74" x 110,24" / 300 x 430cm | 118,11" x 169,29"
400 x 570cm | 157,48" x 224,41" / 600 x 850cm | 236,2" x 335,65"

*Custom dimensions upon request

Materials and Techniques: Hand-tufted | Botanical Silk

GRAFFINESQUE rug will bring some intensity to your home decoration by the unusual combination of colors, which making it impossible to not observe.



INKBLIND | Rug, GRAFF Rug and OTTER Ottoman by BRABBU

GRAFF
URBAN COLLECTION



Dimensions:
 200 x 280cm | 78,74" x 110,24" / 300 x 430cm | 118,11" x 169,29"
 400 x 570cm | 157,48" x 124,41" / 600 x 850cm | 236,2" x 335,65"
 *Custom dimensions upon request
Materials and Techniques: Hand-tufted | Botanical Silk

GRAFF is a tribute to the form of art and expression of graffitis and it is the perfect rug to bring irreverent to the home decoration.



DISRUPTION Rug and DALYAN Armchair by BRABBU

DISRUPTION

URBAN COLLECTION



| 131

Dimensions:

200 x 280cm | 78,74" x 110,24" / 300 x 430cm | 118,11" x 169,29"
400 x 570cm | 157,48" x 124,41" / 600 x 850cm | 236,2" x 335,65"

*Custom dimensions upon request

Materials and Techniques: Hand-tufted | Botanical Silk

DISRUPTION rug is the rug that makes you want to break the limits. Inspired by the disruption act, this handmade rug is supposed to sound radical and cool, like a revolution.



GRAFFITIFIED I Rug, KOTTA Rug, NAJ Armchair and NAJ Ottoman by BRABBU

GRAFFITIFIED I

URBAN COLLECTION



Dimensions:

200 x 280cm | 78,74" x 110,24" / 300 x 430cm | 118,11" x 169,29"
 400 x 570cm | 157,48" x 124,41" / 600 x 850cm | 236,2" x 335,65"

*Custom dimensions upon request

Materials and Techniques: Hand-tufted | Botanical Silk

GRAFFITIFIED I is a premium rug inspired on the act of graffiting. If you want a rug that reminds you of the best of the urban art and to offer you the energy of city life, GRAFFITIFIED I rug will definitely conquer your heart.



GRAFFITIFIED II Rug

GRAFFITIFIED II

URBAN COLLECTION



Dimensions:

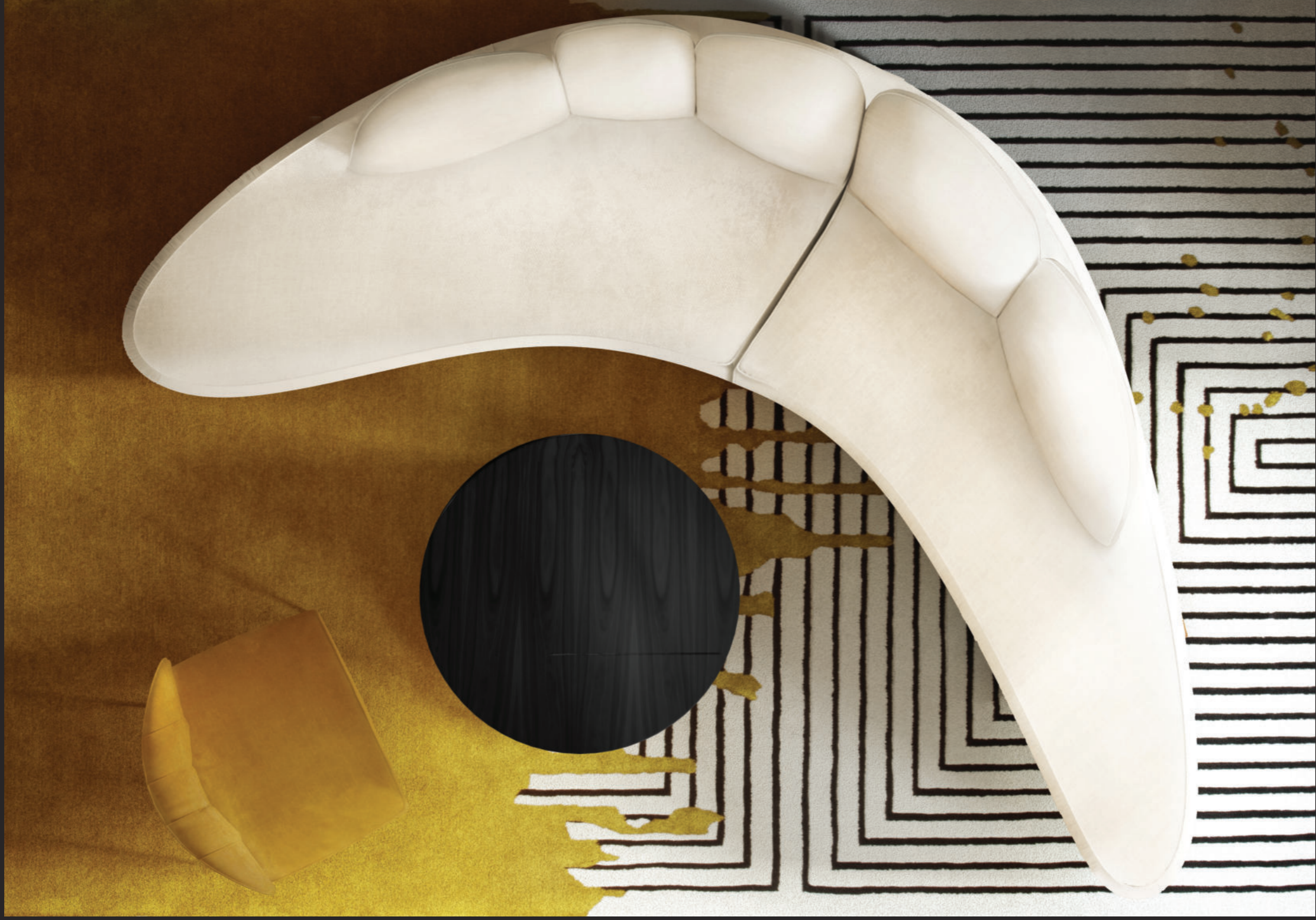
200 x 280cm | 78,74" x 110,24" / 300 x 430cm | 118,11" x 169,29"
400 x 570cm | 157,48" x 124,41" / 600 x 850cm | 236,2" x 335,65"

*Custom dimensions upon request

Materials and Techniques: Hand-tufted | Botanical Silk

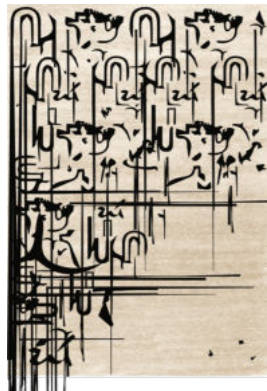
GRAFFITIFIED II is a premium rug inspired on the act of graffiting. If you want a rug that reminds you of the best of the urban art and to offer you the energy of city life, GRAFFITIFIED II rug will definitely conquer your heart.

ALL PRODUCTS

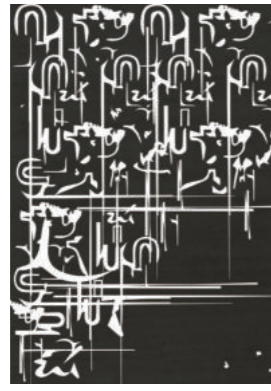


ALL RUGS

ALL PRODUCTS



BLACK INK
Techniques / Materials: Hand-tufted / Botanical Silk
200 x 280cm | 78,74" x 110,24"
300 x 430cm | 118,11" x 169,29"
400 x 570cm | 157,48" x 124,41"
600 x 850cm | 236,2" x 335,65"
*Custom dimensions upon request



BLANC INK
Techniques / Materials: Hand-tufted / Botanical Silk
200 x 280cm | 78,74" x 110,24"
300 x 430cm | 118,11" x 169,29"
400 x 570cm | 157,48" x 124,41"
600 x 850cm | 236,2" x 335,65"
*Custom dimensions upon request



DISRUPTION
Techniques / Materials: Hand-tufted / Botanical Silk
200 x 280cm | 78,74" x 110,24"
300 x 430cm | 118,11" x 169,29"
400 x 570cm | 157,48" x 124,41"
600 x 850cm | 236,2" x 335,65"
*Custom dimensions upon request



GRAFF
Techniques / Materials: Hand-tufted / Botanical Silk
200 x 280cm | 78,74" x 110,24"
300 x 430cm | 118,11" x 169,29"
400 x 570cm | 157,48" x 124,41"
600 x 850cm | 236,2" x 335,65"
*Custom dimensions upon request



GRAFFILOSOPHY
Techniques / Materials: Hand-tufted / Botanical Silk
200 x 280cm | 78,74" x 110,24"
300 x 430cm | 118,11" x 169,29"
400 x 570cm | 157,48" x 124,41"
600 x 850cm | 236,2" x 335,65"
*Custom dimensions upon request



LA LAND
Techniques / Materials: Hand-tufted / New Zealand Wool, Bambu Silk
200 x 300cm | 78,74" x 118,11"
300 x 450cm | 118,11" x 177,17"
400 x 600cm | 157,48" x 236,22"
600 x 800cm | 236,2" x 314,9"
*Custom dimensions upon request



OSLO
Techniques / Materials: Hand-tufted / New Zealand Wool, Bambu Silk
Diam. 200cm | 78,74"
*Custom dimensions upon request



MERMAID
Techniques / Materials: Hand-tufted / Botanical Silk, Lurex
350 X 450cm | 137,79" x 177,17"
*Custom dimensions upon request



IMPERIAL SNAKE LOUNGE
Techniques / Materials: Hand-tufted / New Zealand Wool, Bambu Silk
200 x 425 cm | 78,7" x 167,3"
330 x 720 cm | 129,92" x 283,47"
*Custom dimensions upon request



KLEOPATRA
Techniques / Materials: Hand-tufted / New Zealand Wool, Bambu Silk
220 x 380cm | 86,6" x 149,6"
*Custom dimensions upon request



GARFFINESQUE
Techniques / Materials: Hand-tufted / Botanical Silk
200 x 280cm | 78,74" x 110,24"
300 x 430cm | 118,11" x 169,29"
400 x 570cm | 157,48" x 124,41"
600 x 850cm | 236,2" x 335,65"
*Custom dimensions upon request



GRAFFITIFIED I
Techniques / Materials: Hand-tufted / Botanical Silk
200 x 280cm | 78,74" x 110,24"
300 x 430cm | 118,11" x 169,29"
400 x 570cm | 157,48" x 124,41"
600 x 850cm | 236,2" x 335,65"
*Custom dimensions upon request



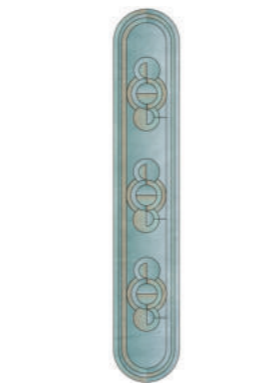
GRAFFITIFIED II
Techniques / Materials: Hand-tufted / Botanical Silk
200 x 280cm | 78,74" x 110,24"
300 x 430cm | 118,11" x 169,29"
400 x 570cm | 157,48" x 124,41"
600 x 850cm | 236,2" x 335,65"
*Custom dimensions upon request



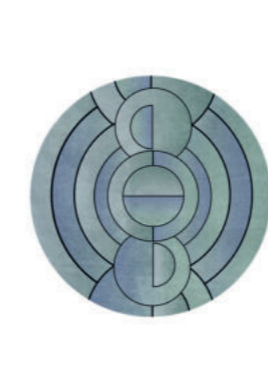
INKAGE
Techniques / Materials: Hand-tufted / Botanical Silk
200 x 280cm | 78,74" x 110,24"
300 x 430cm | 118,11" x 169,29"
400 x 570cm | 157,48" x 124,41"
600 x 850cm | 236,2" x 335,65"
*Custom dimensions upon request



INKAHOLE
Techniques / Materials: Hand-tufted / Botanical Silk
200 x 280cm | 78,74" x 110,24"
300 x 430cm | 118,11" x 169,29"
400 x 570cm | 157,48" x 124,41"
600 x 850cm | 236,2" x 335,65"
*Custom dimensions upon request



KLEOPATRA II
Techniques / Materials: Hand-tufted / New Zealand Wool, Bambu Silk
W 115cm | 45, 28"
*Custom dimensions upon request



KLEOPATRA III
Techniques / Materials: Hand-tufted / New Zealand Wool, Bambu Silk
Diam. 200cm | 78,74"
*Custom dimensions upon request



LUCY
Techniques / Materials: Hand-tufted / Natural Wool, Botanical Silk
227 X 400cm | 89,37" x 157,48"
*Custom dimensions upon request



DIAMOND
Techniques / Materials: Hand-tufted / Botanical Silk
200 x 300cm | 78,74" x 118,11"
300 x 450cm | 118,11" x 177,17"
400 x 600cm | 157,48" x 236,22"
600 x 800cm | 236,2" x 314,9"
*Custom dimensions upon request



ANTELOPE
Techniques / Materials: Hand-tufted / Botanical Silk
200 x 300cm | 78,74" x 118,11"
300 x 450cm | 118,11" x 177,17"
400 x 600cm | 157,48" x 236,22"
600 x 800cm | 236,2" x 314,9"
*Custom dimensions upon request



INKAHOLIC
Techniques / Materials: Hand-tufted / Botanical Silk
200 x 280cm | 78,74" x 110,24"
300 x 430cm | 118,11" x 169,29"
400 x 570cm | 157,48" x 124,41"
600 x 850cm | 236,2" x 335,65"
*Custom dimensions upon request



INKBLIND I
Techniques / Materials: Hand-tufted / Botanical Silk
300 x 730cm | 118,11" x 287,4"
400 x 970cm | 157,48" x 381,89"
500 x 1210cm | 196,85" x 476,38"
600 x 1450cm | 236,2" x 570,87"
*Custom dimensions upon request



INKBLIND II
Techniques / Materials: Hand-tufted / Botanical Silk
300 x 730cm | 118,11" x 287,4"
400 x 970cm | 157,48" x 381,89"
500 x 1210cm | 196,85" x 476,38"
600 x 1450cm | 236,2" x 570,87"
*Custom dimensions upon request



RUIN
Techniques / Materials: Hand-tufted / Botanical Silk
300 x 540cm | 118,11" x 212,6"
400 x 730cm | 157,48" x 287,4"
500 x 910cm | 196,85" x 358,27"
600 x 1090cm | 236,2" x 429,13"
*Custom dimensions upon request



TED
Techniques / Materials: Hand-tufted / New Zealand Wool, Bambu Silk
200 x 300cm | 78,74" x 118,11"
300 x 450cm | 118,11" x 177,17"
400 x 600cm | 157,48" x 236,22"
600 x 800cm | 236,22" x 314,96"
*Custom dimensions upon request



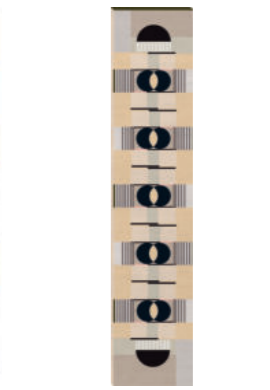
ANTELOPE II
Techniques / Materials: Hand-tufted / Botanical Silk
W 115cm | 45, 28"
*Custom dimensions upon request



ANTELOPE III
Techniques / Materials: Hand-tufted / Botanical Silk
200 x 200cm | 78,74" x 78,74"
*Custom dimensions upon request



ISAAC
Techniques / Materials: Hand-tufted / Natural Wool, Botanical Silk
200 x 300cm | 78,74" x 118,11"
300 x 450cm | 118,11" x 177,17"
400 x 600cm | 157,48" x 236,22"
600 x 800cm | 236,2" x 314,9"
*Custom dimensions upon request



ISAAC II
Techniques / Materials: Hand-tufted / Natural Wool, Botanical Silk
W 115cm | 45, 28"
*Custom dimensions upon request



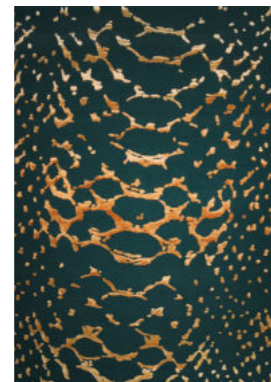
ISAAC III
Techniques / Materials: Hand-tufted / Natural Wool, Botanical Silk
200 x 200cm | 78,74" x 78,74"
*Custom dimensions upon request



TRIOLOGY
Techniques / Materials: Hand-tufted / Botanical Silk
200 x 300cm | 78,74" x 118,11"
300 x 450cm | 118,11" x 177,17"
400 x 600cm | 157,48" x 236,22"
600 x 800cm | 236,2" x 314,9"
*Custom dimensions upon request



REPTILUS
Techniques / Materials: Hand-tufted / Natural Wool, Botanical Silk
200 x 300cm | 78,74" x 118,11"
300 x 450cm | 118,11" x 177,17"
400 x 600cm | 157,48" x 236,22"
600 x 800cm | 236,2" x 314,9"
*Custom dimensions upon request



META
Techniques / Materials: Hand-tufted / Natural Wool, Botanical Silk
200 x 300cm | 78,74" x 118,11"
300 x 450cm | 118,11" x 177,17"
400 x 600cm | 157,48" x 236,22"
600 x 800cm | 236,2" x 314,9"
*Custom dimensions upon request



KOTTA
Techniques / Materials: Hand-tufted / Natural Wool, Botanical Silk
200 x 300cm | 78,74" x 118,11"
300 x 450cm | 118,11" x 177,17"
400 x 600cm | 157,48" x 236,22"
600 x 800cm | 236,2" x 314,9"
*Custom dimensions upon request



COUPLE
Techniques / Materials: Hand-tufted / Natural Wool, Botanical Silk
200 x 300cm | 78,74" x 118,11"
300 x 450cm | 118,11" x 177,17"
400 x 600cm | 157,48" x 236,22"
600 x 800cm | 236,2" x 314,9"
*Custom dimensions upon request



HELLO, STRANGER
Techniques / Materials: Hand-tufted / Botanical Silk, Wool Light
Diam. 200cm | 78,74"
*Custom dimensions upon request



PLANET PARTY
Techniques / Materials: Hand-tufted, details in Overtufting / Botanical Silk, Wool Light
258 x 400cm | 101,6" x 157,5"
*Custom dimensions upon request



PLANET PARTY ROUND
Techniques / Materials: Hand-tufted, details in Overtufting / Botanical Silk, Wool Light
Diam. 350cm | 138"
*Custom dimensions upon request



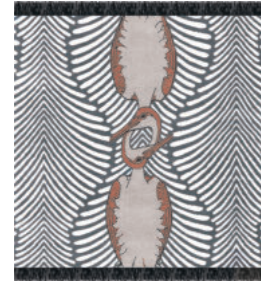
MR. MARTION ROUND
Techniques / Materials: Hand-tufted, details in Overtufting / Botanical Silk, Wool Light
Diam. 300cm | 118,11"
*Custom dimensions upon request



SOLAR SYSTEM
Techniques / Materials: Hand-tufted, details in Loop / Wool Light, Botanical Silk, Bamboo Silk
Diam. 300cm | 118,11"
*Custom dimensions upon request



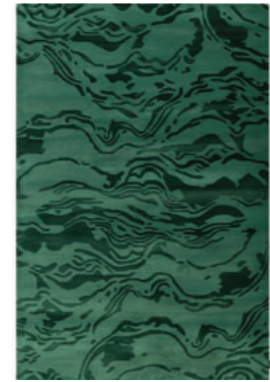
COUPLE II
Techniques / Materials: Hand-tufted / Natural Wool, Botanical Silk
W 115cm | 45,28"
*Custom dimensions upon request



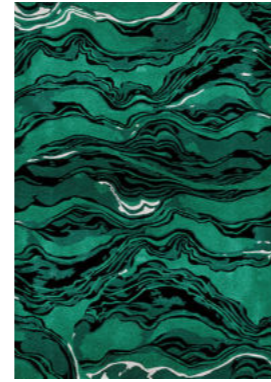
COUPLE III
Techniques / Materials: Hand-tufted / Natural Wool, Botanical Silk
200 x 200cm | 78,74" x 78,74"
*Custom dimensions upon request



HAAR
Techniques / Materials: Hand-tufted / Natural Wool, Botanical Silk
200 x 300cm | 78,74" x 118,11"
300 x 450cm | 118,11" x 177,17"
400 x 600cm | 157,48" x 236,22"
600 x 800cm | 236,2" x 314,9"
*Custom dimensions upon request



CONGO
Techniques / Materials: Hand-tufted, Loop / Natural Wool, Botanical Silk
200 x 300cm | 78,74" x 118,11"
300 x 450cm | 118,11" x 177,17"
400 x 600cm | 157,48" x 236,22"
600 x 800cm | 236,2" x 314,9"
*Custom dimensions upon request



AMAZON
Techniques / Materials: Hand-tufted, Loop / Botanical Silk
200 x 300cm | 78,74" x 118,11"
300 x 450cm | 118,11" x 177,17"
400 x 600cm | 157,48" x 236,22"
600 x 800cm | 236,2" x 314,9"
*Custom dimensions upon request



STELLAR
Techniques / Materials: Hand-tufted, details in Overtufting and Loop / Botanical Silk
300 x 400cm | 118" x 157,4"
*Custom dimensions upon request



STELLAR ROUND
Techniques / Materials: Hand-tufted, details in Overtufting and Loop / Botanical Silk
Diam. 300cm | 118,11"
*Custom dimensions upon request



THUNDER ROCKET
Techniques / Materials: Hand-tufted, details in Overtufting and Loop / Botanical Silk
140 x 210cm | 55" x 82,6"
*Custom dimensions upon request



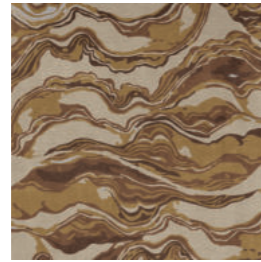
THUNDER ROCKET ROUND
Techniques / Materials: Hand-tufted, details in Overtufting and Loop / Botanical Silk
Diam. 160cm | 63"
*Custom dimensions upon request



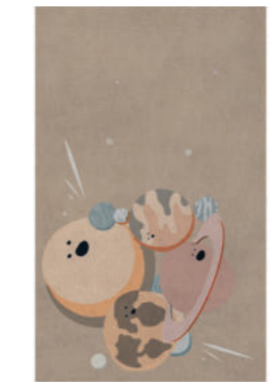
GIRAFFE JUNGLE
Techniques / Materials: Hand-tufted, Over-tufting / Botanical Silk, Contract
160 x 230cm | 63" x 90,5"
*Custom dimensions upon request



AMAZON II
Techniques / Materials: Hand-tufted, Loop / Botanical Silk
W 115cm | 45,28"
*Custom dimensions upon request



AMAZON III
Techniques / Materials: Hand-tufted, Loop / Botanical Silk
200 x 200cm | 78,74" x 78,74"
*Custom dimensions upon request



IV PLANETS
Techniques / Materials: Hand-tufted, details in Overtufting / Wool Light, Botanical Silk, Bamboo Silk
258 x 400cm | 101,6" x 157,5"
*Custom dimensions upon request



IV PLANETS ROUND
Techniques / Materials: Hand-tufted, details in Overtufting / Botanical Silk, Wool Light
Diam. 300cm | 118,11"
*Custom dimensions upon request



ASTROMAN
Techniques / Materials: Hand-tufted, details in Loop / Botanical Silk
Diam. 140cm | 55"
*Custom dimensions upon request



MOWGLI FRIENDS I
Techniques / Materials: Hand-tufted, Over-tufting / Botanical Silk, Contract
140 x 140cm | 55" x 55"
*Custom dimensions upon request



MOWGLI FRIENDS II
Techniques / Materials: Hand-tufted, Overtufting / Botanical Silk, Contract
160 x 230cm | 63" x 90,55"
*Custom dimensions upon request



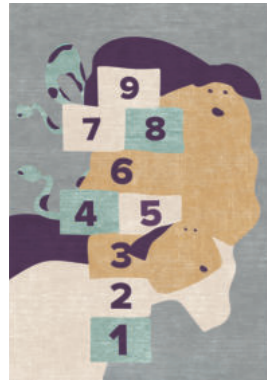
MR. RHINO
Techniques / Materials: Hand-tufted, Over-tufting / Botanical Silk, Contract
140 x 155cm | 55" x 61"
*Custom dimensions upon request



MR. ICE
Techniques / Materials: Hand-tufted, Over-tufting / Botanical Silk, Contract
140 x 140cm | 55" x 55"
*Custom dimensions upon request



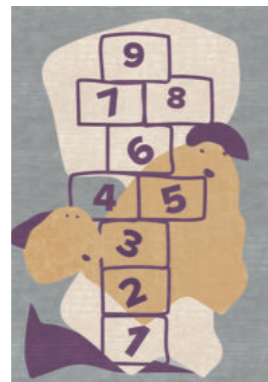
KAA
Techniques / Materials: Hand-tufted, Over-tufting / Botanical Silk, Contract
140 x 148cm | 55" x 58,2"
*Custom dimensions upon request



THE JUNGLE GAME
Techniques / Materials: Hand-tufted, Over-tufting / Botanical Silk, Contract
160 x 230cm | 63" x 90,5"
*Custom dimensions upon request



OCEAN'S ABC
Techniques / Materials: Hand-tufted, Over-tufting / Botanical Silk, Contract
Diam. 200cm | 78,7"
*Custom dimensions upon request



MR. POTATO GAME
Techniques / Materials: Hand-tufted, Over-tufting / Botanical Silk, Contract
160 x 230cm | 63" x 90,5"
*Custom dimensions upon request



PARTY ANIMAL
Techniques / Materials: Hand-tufted, Over-tufting / Botanical Silk, Contract
200 x 280cm | 78,7" x 110,2"
*Custom dimensions upon request



THE ELEPHANT'S SPELL
Techniques / Materials: Hand-tufted, Over-tufting / Botanical Silk, Contract
Diam. 200cm | 78,7"
*Custom dimensions upon request



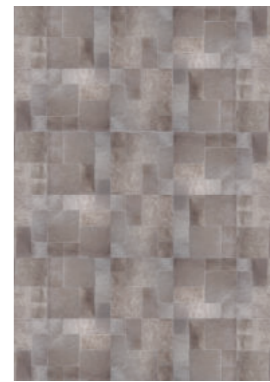
PALM
Techniques / Materials: Hand-tufted / Natural Wool, Botanical Silk
200 x 300cm | 78,74" x 118,11"
300 x 450cm | 118,11" x 177,17"
400 x 600cm | 157,48" x 236,22"
600 x 800cm | 236,2" x 314,9"
*Custom dimensions upon request



MILA
Techniques / Materials: European cowhide rug, made in oblongs
160 x 200cm | 62,99" x 78,74"
200 x 240cm | 78,74" x 94,49"
240 x 320cm | 94,49" x 125,98"
*Custom dimensions upon request



PETE
Techniques / Materials: European cowhide rug, made in oblongs
180 x 240cm | 70,87" x 94,49"
230 x 300cm | 90,55" x 118,11"
270 x 360cm | 106,30" x 141,73"
*Custom dimensions upon request



ART
Techniques / Materials: European cowhide rug, made in different squares and oblongs
160 x 200cm | 62,99" x 78,74"
200 x 240cm | 78,74" x 94,49"
240 x 280cm | 94,49" x 110,24"
*Custom dimensions upon request



PANEL METAL
Techniques / Materials: European cowhide rug, made in square, with metal laser incision
160 x 200cm | 62,99" x 78,74"
200 x 240cm | 78,74" x 94,49"
240 x 280cm | 94,49" x 110,24"
*Custom dimensions upon request



THE POWER ELEPHANT
Techniques / Materials: Hand-tufted, Over-tufting / Botanical Silk, Contract
200 x 280cm | 78,7" x 110,2"
*Custom dimensions upon request



THE RHINO'S TROUPE
Techniques / Materials: Hand-tufted, Over-tufting / Botanical Silk, Contract
160 x 230cm | 63" x 90,5"
*Custom dimensions upon request



THE RHINO'S TROUPE ROUND
Techniques / Materials: Hand-tufted, Over-tufting / Botanical Silk, Contract
Diam. 200cm | 78,7"
*Custom dimensions upon request



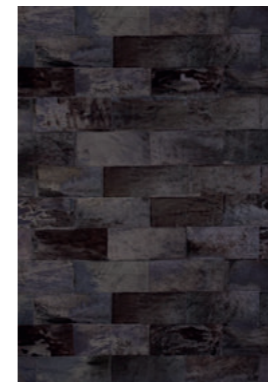
THE TURTLE TOWER
Techniques / Materials: Hand-tufted, Over-tufting / Botanical Silk, Contract
160 x 230cm | 63" x 90,5"
*Custom dimensions upon request



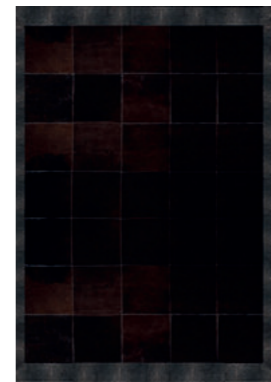
THE WHALE'S CLASS
Techniques / Materials: Hand-tufted, Over-tufting / Botanical Silk, Contract
160 x 230cm | 63" x 90,5"
*Custom dimensions upon request



PANEL PRINT
Techniques / Materials: European cowhide rug, made in square, printed in zebra, leopard
160 x 200cm | 62,99" x 78,74"
200 x 240cm | 78,74" x 94,49"
240 x 300cm | 94,49" x 118,11"
*Custom dimensions upon request



BRICK
Techniques / Materials: European cowhide rug, made in oblongs
160 x 200cm | 62,99" x 78,74"
200 x 260cm | 78,74" x 102,36"
240 x 300cm | 94,49" x 118,11"
*Custom dimensions upon request



CHIC
Techniques / Materials: European cowhide rug, made in squares and finished with a border of bovine leather engraved in stingray
160 x 200cm | 62,99" x 78,74"
200 x 260cm | 78,74" x 102,36"
260 x 320cm | 102,36" x 125,98"
*Custom dimensions upon request



GINGER
Techniques / Materials: European cowhide rug and merinito lamb
145 x 180cm | 57,09" x 70,87"
180 x 250cm | 70,87" x 98,43"
250 x 320cm | 98,43" x 125,98"
*Custom dimensions upon request



HUT
Techniques / Materials: European cowhide rug, made in squares and finished with a border of Mongolian goat
140 x 200cm | 55,12" x 78,74"
170 x 230cm | 66,93" x 90,55"
200 x 290cm | 78,74" x 114,17"
*Custom dimensions upon request



THE WHALE'S TALE
Techniques / Materials: Hand-tufted, Over-tufting / Botanical Silk, Contract
140 x 115cm | 55" x 42"
*Custom dimensions upon request



THREE'S A CROWD
Techniques / Materials: Hand-tufted, Over-tufting / Botanical Silk, Contract
Diam. 200cm | 78,7"
*Custom dimensions upon request



TREE OF NUMBERS
Techniques / Materials: Hand-tufted, Over-tufting / Botanical Silk, Contract
Diam. 200cm | 78,7"
*Custom dimensions upon request



TURTLE SHELL
Techniques / Materials: Hand-tufted, Over-tufting / Botanical Silk, Contract
140 x 150cm | 55" x 59"
*Custom dimensions upon request



UPSIDE DOWN
Techniques / Materials: Hand-tufted, Over-tufting / Botanical Silk, Contract
140 x 130cm | 55" x 51"
*Custom dimensions upon request



COW PRINT
Techniques / Materials: European printed cowhide rug
3 m2 | 4650 in2
4 m2 | 6200 in2
5 m2 | 7750 in2
*Custom dimensions upon request



COW COLOR
Techniques / Materials: European dyed cowhide rug
3 m2 | 4650 in2
4 m2 | 6200 in2
5 m2 | 7750 in2
*Custom dimensions upon request



COW CROCO
Techniques / Materials: European cowhide rug engraved in croco
3 m2 | 4650 in2
4 m2 | 6200 in2
5 m2 | 7750 in2
*Custom dimensions upon request



COW NATURAL
Techniques / Materials: European natural cowhide rug
3 m2 | 4650 in2
4 m2 | 6200 in2
5 m2 | 7750 in2
*Custom dimensions upon request



RUG'SOCIETY

THE DELUXE OF PAST & PRESENT



COMPETE
2020

PORTUGAL
2020

UNIÃO EUROPEIA
Fundo Europeu
de Desenvolvimento Regional

WWW.RUGSOCIETY.EU | INFO@RUGSOCIETY.EU