



roberto cavalli  
HOME  
INTERIORS



<b>ASSAL SOFA</b>	4
<b>KRUGER SOFA</b>	14
<b>ARUBA SECTIONAL SOFA</b>	26
<b>VICTORIA SECTIONAL SOFA</b>	40
<b>CLIFTON SOFA</b>	54
<b>KINGSTON SOFA</b>	60
<b>MANHATTAN SOFA</b>	72
<b>SMOKING.2 SOFA</b>	80
<b>CLIFTON SOFA</b>	88
<b>DARLINGTON.2 SECTIONAL SOFA</b> <b>DARLINGTON SOFA</b>	98
<b>INANDA SOFA</b>	116
<b>MALAWI SOFA</b>	124
<b>BAOBAB DINING TABLE</b>	134
<b>COMORE DINING TABLE</b>	142
<b>ANTIGUA DINING TABLE</b>	152
<b>SIORAF DINING TABLE</b>	160
<b>KIBO DINING TABLE</b>	174
<b>NYOS DINING TABLE</b>	182
<b>KARIBA BAR</b>	188
<b>ELGON BED</b>	194
<b>SMOKING BED</b>	202
<b>NILO BED</b>	210
<b>MALAWI BED</b>	218
<b>MORNE BED</b>	228
<b>NAKURU WALK-IN CLOSET</b>	238
<b>ANTIGUA DESK</b>	246
<b>COMPLEMENTS</b>	254
<b>PRODUCTS INFO</b>	262
<b>JEWEL HANDLES</b>	292

AN IRRESISTIBLE  
INVITATION TO RELAX.  
ASSAL SOFA SINUOUS  
AND SENSUAL LINES  
ARE PERFECT TO  
SHARE MOMENTS OF  
CAREFREENESS AND  
REST. ITS CLEAN DESIGN  
AND SUBTLE ELEGANCE  
ARE ENHANCED BY SOFT  
LEATHER IN A DELICATE  
SHADE OF BEIGE.



ASSAL SOFA  
INANDA POUF  
TURKANA LOW TABLES  
MAUI LOW TABLE  
WALL SECTIONAL BOOKCASE  
WATAMU CONSOLE  
TRINIDAD MIRROR  
CORAL FLOOR LAMP





WILD ARMCHAIRS  
MERU LOW TABLE  
UNITED STATES OF CAVALLI PRINT  
FLAG RUG





SENSUAL COMFORT AND ELEGANT COZINESS. WITH ITS SINUOUS LINES AND SOFT SHAPES, KRUGER SOFA EXPRESSES A CONCEPT OF WELCOMING LUXURY. THE EXTREME CARE IN THE WORKMANSHIP IS VISIBLE IN THE SARTORIAL DETAILS, SUCH AS THE GOLDEN LINE THAT RUNS ALONG THE PERIMETER OF THE SOFA.





**KRUGER** SOFA  
**CURAÇAO** ARMCHAIR  
**DAVIS** ARMCHAIRS  
**LIMBO** POUF  
**SAHARA** LOW TABLES  
**PAJE** LOW TABLES  
**CORAL** FLOOR LAMP  
**MAYA** WALL LAMPS  
**UNITED STATES OF CAVALLI** PRINT  
**FLAG** RUG





**KRUGER SOFA**  
**PAJE LOW TABLES**  
**FLAG RUG**

**KRUGER** SOFA  
**DAVIS** ARMCHAIRS  
**PAJE** LOW TABLES  
**MAYA** WALL LAMPS  
**FLAG** RUG





CURACAO ARMCHAIR  
LIMBO POUF  
SAHARA LOW TABLES  
FLAG RUG

CURAÇÃO ARMCHAIR  
PAJE LOW TABLE  
CORAL FLOOR LAMP  
FLAG RUG



CONTEMPORARY SHAPES  
AND VINTAGE TOUCHES  
FOR THE ARUBA SOFA,  
SUCH AS THE 70S' VIBE  
OF THE LIGHT LEGS IN  
TRANSPARENT PLEXIGLASS.  
A SARTORIAL ELEMENT IS  
GIVEN BY THE STITCHING  
ON THE ARMRESTS,  
RECALLING THE ICONIC  
ROBERTO CAVALLI  
LEATHER GOODS.



ARUBA SECTIONAL SOFA  
CAICOS SOFA  
CURAÇAO BERGERE  
RAGALI/RAGALI.2 LOW TABLES  
VANUATU LOW TABLE  
ACAPULCO BOOKCASE  
UMA SCREEN  
SIORAF CHANDELIER  
ANTIGUA TABLE LAMP  
CHARLIZE RUG



ARUBA SECTIONAL SOFA  
VANUATU LOW TABLE  
ACAPULCO BOOKCASE  
ANTIGUA TABLE LAMP  
CHARLIZE RUG





CAICOS SOFA  
CURAÇAO BERGERE  
RAGALI/RAGALI.2 LOW TABLES  
VANUATU LOW TABLE  
ACAPULCO BOOKCASE  
UMA SCREEN  
ANTIGUA TABLE LAMP  
CHARLIZE RUG



CAICOS SOFA  
RAGALI/RAGALI.2 LOW TABLES  
CHARLIZE RUG



CAICOS SOFA  
CURAÇÃO BERGERE  
RAGALI.2 LOW TABLE  
ANTIGUA TABLE LAMP  
UMA SCREEN





THE TEMPTING SNAKE,  
AN ALLUSION TO  
THE ORIGINAL SIN,  
HAS ALWAYS BEEN A  
POWERFUL SYMBOL OF  
THE MAISON.  
IN THE VIKTORIA SOFA, THE  
SNAKE ALSO BECOMES  
A SCENOGRAPHIC  
METALLIC ELEMENT  
ADDING A DECORATIVE  
NOTE TO THE PIECE OF  
FURNITURE.



VICTORIA SECTIONAL SOFA  
INANDA ARMCHAIRS  
TURKANA LOW TABLES  
COOPER LOW TABLE  
LOGIPI FLOOR LAMP  
CHARLIZE RUG





VIKTORIA SECTIONAL SOFA  
INANDA ARMCHAIRS  
TURKANA LOW TABLE  
COOPER LOW TABLES  
CHARLIZE RUG

VIKTORIA SECTIONAL SOFA  
TURKANA LOW TABLES  
CHARLIZE RUG





INANDA ARMCHAIR  
COOPER LOW TABLE  
LOGIPI FLOOR LAMP  
CHARLIZE RUG





SNAKE ARMCHAIR  
LOGIPI FLOOR LAMP  
CHARLIZE RUG



LUXURY AND  
GLAMOUR.  
A SETTING INFUSING  
A FEELING OF  
SOPHISTICATION,  
ENHANCED BY THE  
MANIACAL ATTENTION  
TO DETAILS.  
LIKE IN CLIFTON SOFA,  
A STUNNING PIECE  
OF FURNITURE WITH A  
TEXTURAL UPHOLSTERY  
AND BRIGHT FEET.



CLIFTON SOFA  
CURAÇAO BERGERE  
LIMBO POUF  
SIORAF LOW TABLE  
VANUATU LOW TABLE  
VAAL SIDEBOARD  
BRICK TABLE LAMP  
UMA RUG



CLIFTON SOFA  
VANUATU LOW TABLE  
SIORAF LOW TABLE  
BRICK TABLE LAMP  
UMA RUG



A WIDE AND COMFORTABLE SEAT FOR KINGSTON MODULAR SOFA. THE PECULIAR MANUFACTURING OF THE SEATBACK IS THE MAIN FEATURE, WHILE THE PLEATED ELEMENTS CREATE A PERFECT COMBINATION BETWEEN EXPERIMENTAL DESIGN AND TAILORED DECORATION.



KINGSTON SOFA / SECTIONAL SOFA  
KEY WEST ARMCHAIR  
LIMBO POUF  
COOPER LOW TABLE  
INAGUA LOW TABLES  
VANUATU LOW TABLE  
SIORAF CONSOLE  
TRINIDAD MIRROR  
ANTIGUA CHANDELIER  
BRICK FLOOR LAMP  
UMA RUG







**KINGSTON** SOFA / SECTIONAL SOFA  
**KEY WEST** ARMCHAIR  
**LIMBO** POUF  
**COOPER** LOW TABLE  
**INAGUA** LOW TABLES  
**VANUATU** LOW TABLE  
**BRICK** FLOOR LAMP  
**UMA** RUG



KINGSTON SOFA  
INAGUA LOW TABLES  
VANUATU LOW TABLE  
ANTIGUA CHANDELIER  
UMA RUG



KINGSTON SOFA  
LIMBO POUF  
INAGUA LOW TABLE  
VANUATU LOW TABLE  
UMA RUG



KEY WEST ARMCHAIR  
SIORAF CONSOLE  
TRINIDAD MIRROR  
BRICK FLOOR LAMP



ELEGANCE AND COMFORT.  
MANHATTAN IS A DESIGN  
PIECE RAISED OFF THE  
FLOOR ON THIN GOLD  
FINISHED LEGS, FOR A  
SCULPTURAL EFFECT.  
ITS SHAPE GIVES A COZY  
SENSATION OF INVITING  
WARMTH AND SOFTNESS,  
PERFECTLY MIXING RELAX  
AND SOPHISTICATION.



MANHATTAN SOFA  
MANHATTAN ARMCHAIRS  
KEY WEST ARMCHAIRS  
LIMBO POUF  
RAGALI LOW TABLE  
TURKANA LOW TABLES  
YOA LOW TABLE  
SIORAF CONSOLE  
SIORAF 3 FLOOR LAMP  
SILK DECORATIVE ITEM  
UMA RUG





MANHATTAN SOFA  
YOA LOW TABLE



MANHATTAN ARMCHAIRS  
RAGALI LOW TABLE  
SIORAF.3 FLOOR LAMP  
UMA RUG





SENSUALITY AND  
REFINEMENT MEET IN  
THE SMOKING.2 SOFA.  
THE PERFECTION OF  
THE PROPORTIONS  
ACCOMPANIES THE  
SPECIAL DECORATIVE  
FOLD ON THE ARMREST,  
HANDCRAFTED BY  
SKILLFUL ARTISANS.  
A PIECE OF FURNITURE  
DESIGNED TO CREATE A  
COZY RELAXING CORNER  
IN ANY LIVING AREA.



SMOKING.2 SOFA  
LIMBO POUF  
COOPER LOW TABLE  
RAGALI.2 LOW TABLE  
LOGIPI FLOOR LAMP  
ARTWORKS DECORATIVE ITEMS  
AUDREY RUG



SMOKING.2 SOFA  
COOPER LOW TABLE  
RAGALI.2 LOW TABLE  
LOGIPI FLOOR LAMP  
ARTWORKS DECORATIVE ITEMS  
AUDREY RUG



SMOKING.2 SOFA  
COOPER LOW TABLE  
RAGALI.2 LOW TABLE  
AUDREY RUG



A ONE-OF-A-KIND,  
BOLD SOFA: THE  
FLAWLESS EXPRESSION  
OF THE TRUE ESSENCE  
OF THE BRAND.  
UPHOLSTERED IN  
TEXTURAL AND  
LUXURIOUS COCCO  
LEATHER, CLIFTON SOFA  
COMBINES COMFORT  
AND UNEXPECTED  
TOUCHES, ALL IN ONE.





CLIFTON SOFA  
CLIFTON ARMCHAIRS  
TIFNIT ARMCHAIR  
WATAMU LOW TABLES  
SIORAF.3 FLOOR LAMP  
TIGER RUG



CLIFTON SOFA  
WATAMU LOW TABLES  
SIORAF.3 FLOOR LAMP  
TIGER RUG



CLIFTON ARMCHAIR  
WATAMU LOW TABLES  
SIORAF.3 FLOOR LAMP





TIFNIT ARMCHAIR  
WATAMU LOW TABLES  
TIGER RUG

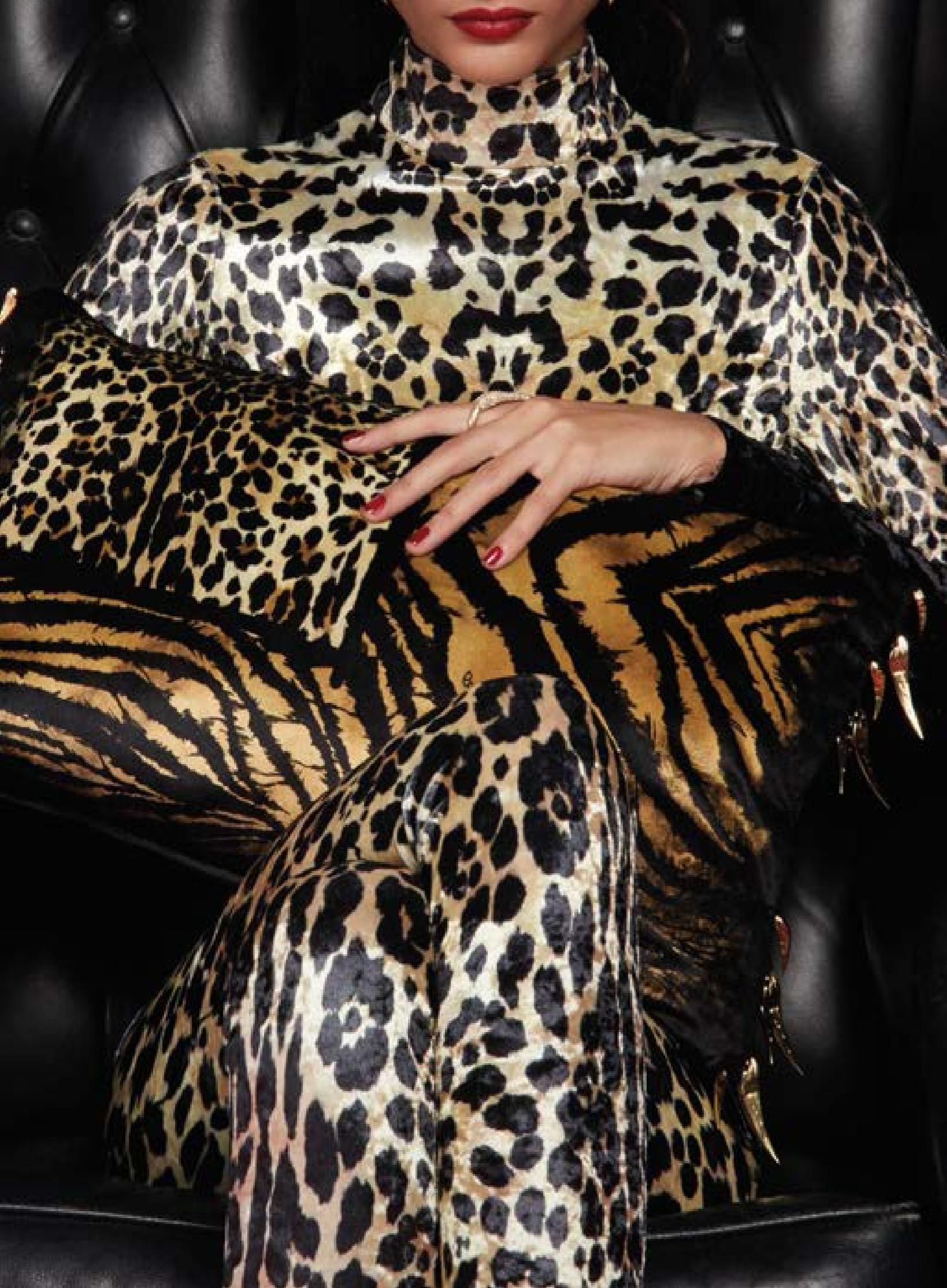


DARLINGTON.2 SOFA  
SHOWCASES SARTORIAL  
DETAILS SUCH AS THE  
CAPITONNÉ FINISHING  
AND POWERFUL  
SYMBOLIC ELEMENTS, LIKE  
THE ANIMAL PATTERNS IN  
THEIR NATURAL TONES.  
FOR A LIVING ROOM WITH  
AN UNPRECEDENTED  
REBELLIOUS SPIRIT.



DARLINGTON. 2 SECTIONAL SOFA  
DARLINGTON SOFA  
WINGS ARMCHAIR  
JIFE LOW TABLES  
MAUI LOW TABLE  
ACAPULCO BOOKCASE  
KELBIA STAND MIRROR  
ANTIGUA TABLE LAMP  
FLAG RUG





DARLINGTON.2 SECTIONAL SOFA  
JIPE LOW TABLES  
KELBIA STAND MIRROR  
ANTIGUA TABLE LAMP  
FLAG RUG



**DARLINGTON.2** SECTIONAL SOFA  
**WINGS** ARMCHAIR  
**JIPE** LOW TABLES  
**KELBIA** STAND MIRROR  
**FLAG** RUG



DARLINGTON SOFA  
JIPE LOW TABLES  
MAUI LOW TABLE  
ACAPULCO BOOKCASE  
ANTIGUA TABLE LAMP  
FLAG RUG



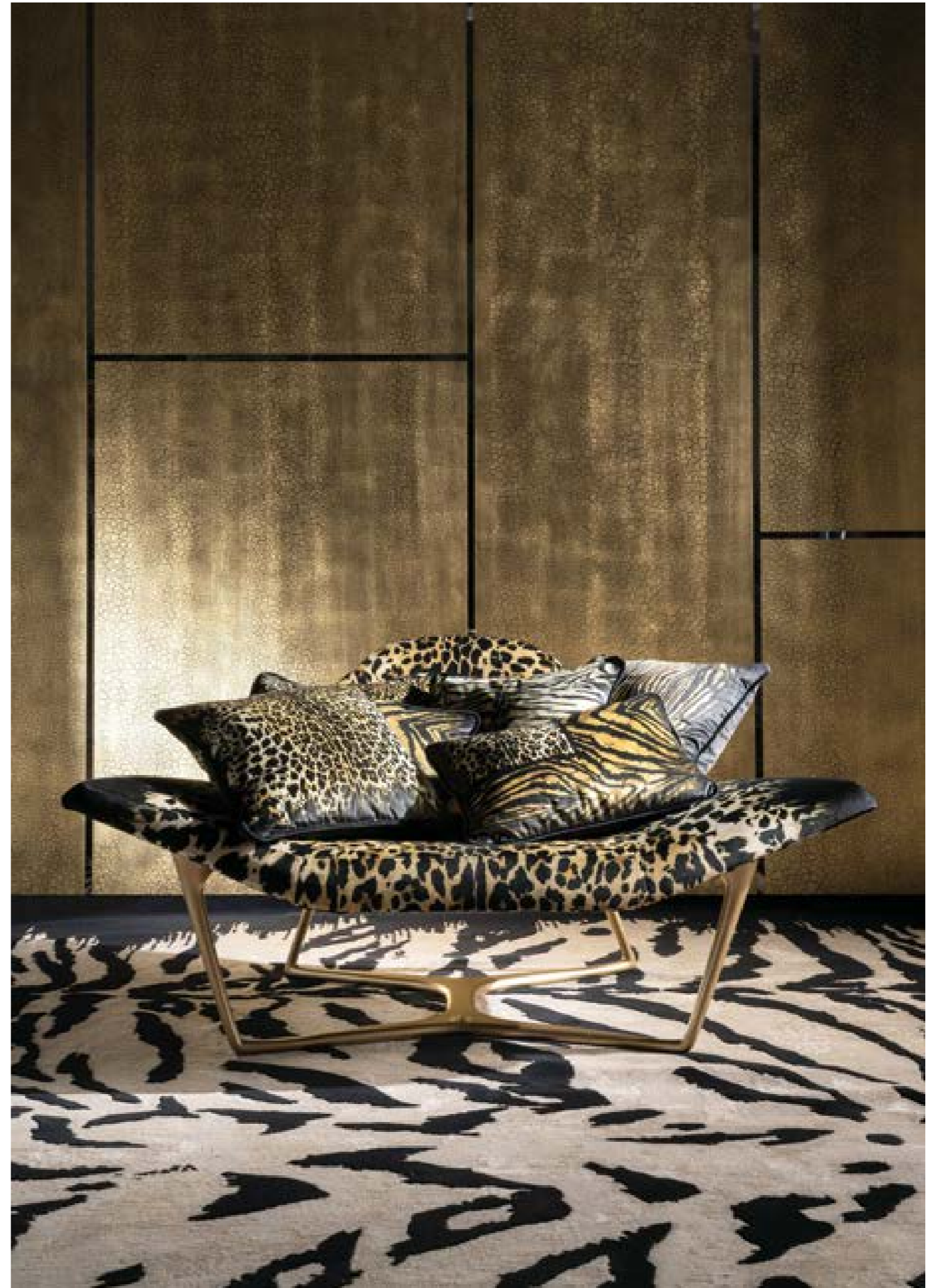
DARLINGTON SOFA  
MAUI LOW TABLE  
FLAG RUG



WINGS ARMCHAIR  
JIPE LOW TABLE  
FLAG RUG









WITH ITS APPEALING  
DESIGN, INANDA SOFA  
MIXES SILKS WITH  
ANIMAL PATTERNS AND  
LEATHER FEATURING  
A SPECIAL PLEATING  
WITH METALLIC  
PIERCINGS. A PIECE  
OF FURNITURE WITH  
AN INCOMPARABLE  
AESTHETIC TO ENLIVEN  
A SOPHISTICATED  
LIVING ROOM.



INANDA SOFA  
CURAÇAO BERGERES  
FIJI ARMCHAIR  
INANDA POUF  
COOPER LOW TABLE  
MAUI LOW TABLE  
SIORAF LOW TABLES  
KIOGA CHANDELIER  
TIGER RUG



INANDA SOFA  
INANDA POUF  
COOPER LOW TABLE  
SIORAF LOW TABLE  
TIGER RUG





CURAÇAO BERGERES  
COOPER LOW TABLE  
SIORAF LOW TABLE  
KIOGA CHANDELIER  
TIGER RUG

A SOFA THAT EMBODIES THE  
AESTHETIC OF ROBERTO  
CAVALLI HOME INTERIORS.  
MALAWI IS A PIECE OF  
FURNITURE WITH A FEMININE  
AND ULTRA-CHIC STYLE,  
EXPRESSED IN THE  
SEDUCTIVE LINES AND IN  
THE SENSUALITY OF THE  
LEATHER UPHOLSTERY AND  
DECORATIVE FRINGES.



MALAWI SOFA  
INANDA POUF  
RAGALI LOW TABLES  
SIORAF CHANDELIER  
FLAG RUG





MALAWI SOFA  
MACLAINE ARMCHAIRS  
INANDA POUF  
RAGALI LOW TABLES  
KELBIA STAND MIRROR  
SIORAF CHANDELIER  
FLAG RUG



MACLAINE ARMCHAIR  
SOHO CONSOLE  
SILK DECORATIVE ITEM





AN EMOTIONAL TRIP TO  
THE HEART OF THE  
AFRICAN SAVANNAH.  
BAOBAB IS SCULPTURAL  
TABLE FEATURING A  
TOP MADE UP OF FIVE  
IRREGULARLY SHAPED  
MARBLE ELEMENTS THAT  
RECALL THE FOLIAGE OF  
THE BAOBAB AND A BASE  
OF CYLINDRICAL TUBES  
REMINING THE TRUNK  
OF THE TREE.



SHIRA CHAIRS  
BAOBAB DINING TABLE  
KASAI SHOWCASE







A SCENOGRAPHIC AND CAPTIVATING DINING ROOM FURNISHED WITH COMORE TABLE AND LIPARI CHANDELIER. THE SCULPTURAL TOP OF THE TABLE IS CREATED THROUGH A COMPLEX PROCESS OF CRAFTSMANSHIP OF THE PORCELAIN STONEWARE, WITH INSERTS IN GOLD METAL THAT PRODUCE A GEOMETRIC DECORATIVE DESIGN.





**INANDA** CHAIRS  
**COMORE** DINING TABLE  
**TONGA** SIDEBOARD  
**TONGA** BAR CABINET  
**BATTEN** CHANDELIER  
**ARTWORK** DECORATIVE ITEM  
**UMA** RUG



INANDA CHAIRS  
COMORE DINING TABLE  
TONGA SIDEBOARD  
BATTEN CHANDELIER  
ARTWORK DECORATIVE ITEM  
UMA RUG



**INANDA** CHAIRS  
**COMORE** DINING TABLE  
**TONGA** BAR CABINET  
**UMA** RUG





IN AN UNEXPECTED PLAY OF DIFFERENT ELEMENTS, THE EXTRAORDINARY GLOSSY GOLD SCULPTURE AT THE BASE OF THE ANTIGUA TABLE LAYS ON THE GREY CARBALHO TOP A SCENIC AND IMPACTFUL ELEMENT FOR A CONTEMPORARY DINING ROOM.



KIVU CHAIRS  
ANTIGUA DINING TABLE  
VAAL SIDEBOARD  
ANTIGUA CHANDELIERS  
SIORAF.3 TABLE LAMP  
SILK DECORATIVE ITEM  
UMA RUG



KIVU CHAIRS  
ANTIGUA DINING TABLE  
ANTIGUA CHANDELIERS  
SIORAF.3 TABLE LAMP  
UMA RUG





VAAL SIDEBOARD  
SIORAF.3 TABLE LAMP  
SILK DECORATIVE ITEM



A SPECTACULAR  
DINING ROOM WITH  
SIORAF TABLE AS MAIN  
PROTAGONIST.  
A PIECE OF FURNITURE  
WITH HIGH ARTISTIC  
VALUE AND A STRONG  
ARTISANAL COMPONENT,  
CHARACTERIZED BY  
THE PRESENCE OF AN  
ELEGANT BASE MADE  
OF CAST BRASS HAND  
CHISELLED AND GOLD-  
PLATED, WHOSE DESIGN  
REMINDS OF THE TYPICAL  
GIRAFFE PATTERN OF  
THE BRAND.



KEY WEST CHAIRS  
SIORAF DINING TABLE  
AZINGO CABINET  
LIPARI CHANDELIER  
SILK DECORATIVE ITEM







TEIDE CHAIRS  
SIORAF DINING TABLE  
VAAL SIDEBOARD  
SAHARA MIRROR  
MAUI WALL LAMPS  
FLAG RUG



TEIDE CHAIRS  
SIORAF DINING TABLE  
VAAL SIDEBOARD  
SAHARA MIRROR  
FLAG RUG



TEIDE CHAIRS  
SIORAF DINING TABLE  
VAAL SIDEBOARD  
SAHARA MIRROR  
MAUI WALL LAMPS  
FLAG RUG



A SETTING WITH A GREAT PERSONALITY, BLURRING THE LINE BETWEEN ART AND DESIGN. KIBO IS A TABLE OF SCENIC IMPACT, FEATURING A SPECIAL COMBINATION OF FINE MATERIALS AND EVOCATIVE SHADES THAT GIVES LIFE TO SOPHISTICATED PLAYS OF LIGHT AND REFLECTIONS.





SHIRA CHAIRS  
KIBO DINING TABLE  
SOIRA SIDEBOARD  
WITCH MIRROR  
KIOGA CHANDELIER



SHIRA CHAIRS  
KIBO DINING TABLE  
KIOGA CHANDELIER





WITH ITS INTERESTING  
FIGURE, NYOS IS A TABLE  
CHARACTERIZED BY  
A PRECIOUS MARBLE  
TOP WITH AN IRREGULAR  
SHAPE AND A METAL BASE  
MADE UP OF AN ORIGINAL  
GAME OF CURVED LINES.



MACLAINE CHAIRS  
NYOS DINING TABLE  
KASAI SHOWCASE  
LIPARI CHANDELIER





DEDICATED TO THE MOST RELAXING & FUN MOMENTS – ALWAYS WITH A SASSY ATTITUDE – KARIBA BAR AREA BOASTS A LEATHER UPHOLSTERY WITH QUILTING RECALLING THE GIRAFFE PATTERN. THE MARBLE TOP COMPLETES THE GLAM-CHIC CHARM OF THE SETTING.



KARIBA BAR COUNTER  
KEY WEST STOOLS  
SIORAF CHANDELIERS  
AUDREY RUG





KARIBA BAR COUNTER  
KEY WEST STOOLS  
SIORAF CHANDELIERS  
AUDREY RUG



KINTSUGI IS THE ANCIENT JAPANESE ART OF GIVING NEW LIFE TO FRAGMENTS OF BROKEN OBJECTS, ENHANCING THE NEW RIBS CREATED. THIS IS THE INSPIRATION BEHIND THE HEADBOARD OF THE ELGON BED, WHERE THE REFINED DECORATIONS ALSO BRING TO MIND THE TYPICAL ANIMALIER PATTERNS OF THE CAVALLI WORLD.



ELGON BED  
LIMBO POUF

TRINIDAD NIGHT TABLE  
SAHARA LOW TABLE  
MORNE CONSOLE  
KEY WEST CHAIR

WITCH MIRROR  
SIORAF CHANDELIER  
UMA RUG



ELGON BED  
TRINIDAD NIGHT TABLE  
SIORAF CHANDELIER  
UMA RUG



**ELGON** BED  
**LIMBO** POUF  
**TRINIDAD** NIGHT TABLE  
**MORNE** CONSOLE  
**WITCH** MIRROR



HAMPTONS BED PERFECTLY  
EXPRESSES THE DNA OF  
THE FASHION MAISON, A  
TRIUMPH OF SOPHISTICATED,  
CHARACTER AND SENSUALITY.  
REFINED MANUFACTURING,  
ELEGANT SHAPES AND  
UNMISTAKABLE DECORATIVE  
NOTES BECOME INSTRUMENTS  
OF EVERYDAY SEDUCTION.



**SMOKING BED**  
**DAVIS ARMCHAIR**  
**HERA.2 POUF**  
**WADDI POUF**  
**MARTINICA NIGHT TABLES**  
**SAHARA STAND MIRROR**  
**ANTIGUA TABLE LAMP**  
**LIPARI CHANDELIER**



**SMOKING BED**  
**MARTINICA NIGHT TABLE**  
**ANTIGUA TABLE LAMP**





**SMOKING BED**  
**DAVIS ARMCHAIR**  
**MARTINICA NIGHT TABLE**  
**SAHARA STAND MIRROR**



POWERFUL SYMBOLS  
AND ELOQUENT DETAILS.  
IN THE NILO BED, THE  
SNAKE LENDS ITS SHAPE  
TO THE DECORATIVE METAL  
CHAIN THAT ENRICHES THE  
HEADBOARD. A SENSUAL  
AND MEANINGFUL ELEMENT  
WHICH HAS ALWAYS BEEN  
PART OF THE ROBERTO  
CAVALLI UNIVERSE.



NILO BED  
SIORAF ARMCHAIR  
MALAWI POUF  
TRINIDAD NIGHT TABLES  
SAHARA.6 DRAWER UNIT  
LOGIPI TABLE LAMPS  
LOGIPI FLOOR LAMP  
ARTWORKS DECORATIVE ITEMS  
CHARLIZE RUG





NILO BED  
TRINIDAD NIGHT TABLES  
LOGIPI TABLE LAMPS



TRINIDAD NIGHT TABLES  
SAHARA.6 DRAWER UNIT  
LOGIPI FLOOR LAMP



THE TIMELESS  
COMBINATION OF BLACK  
LEATHER AND GOLD.  
IN THE MALAWI BED, THIS  
POWERFUL BLEND DEFINES  
THE SARTORIAL SKILLS OF  
THE BRAND, TO BE FOUND  
ALSO IN THE DECORATIVE  
LEATHER FRINGES  
ENRICHING THE BASE.



MALAWI BED  
WILD POUF  
GUAM BERGERE/FOOT REST  
DORIAN.2 NIGHT TABLES  
COOPER LOW TABLE  
LOGIPI TABLE LAMP  
WILD NARROW TABLE LAMP  
TIGER RUG

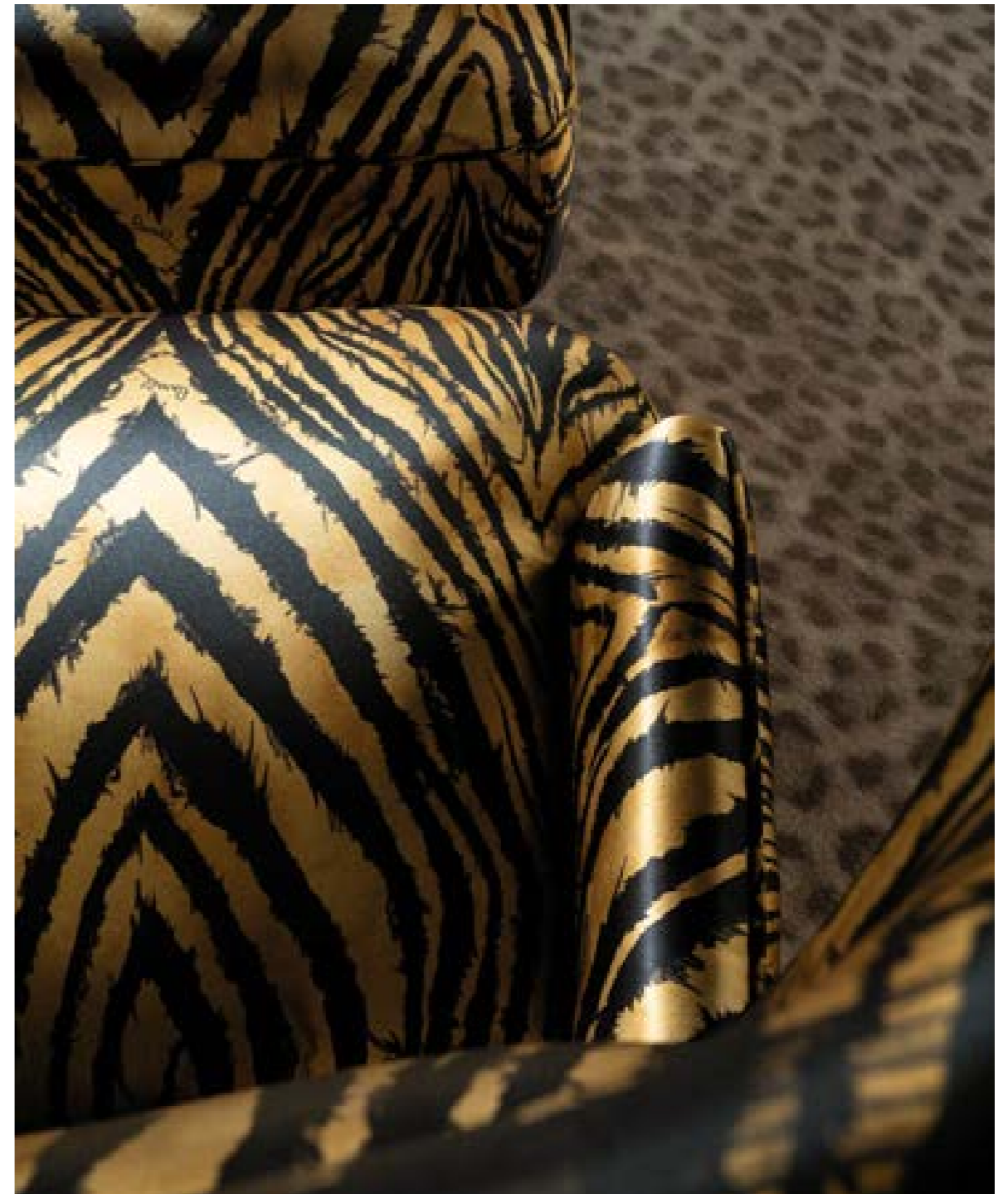


MALAWI BED  
WILD POUF  
DORIAN.2 NIGHT TABLE  
LOGIPI TABLE LAMP  
WILD NARROW TABLE LAMP  
TIGER RUG





GUAM BERGERE/FOOT REST  
COOPER LOW TABLE  
WILD NARROW TABLE LAMP





BOLD STYLE AND ROCK SPIRIT FOR MORNE BED, THE UNDISPUTED STAR OF THE NIGHT AREA. SYMBOLIC ELEMENTS LIKE ROBERTO CAVALLI LOGO EMBROIDERED IN CENTRAL POSITION, TOGETHER WITH THE ARTISANAL LEATHER MANUFACTURING AND THE ANIMAL PATTERNS ENHANCE ITS DARING CHARACTER.



MORNE BED  
WADDI POUF  
MORNE NIGHT TABLES  
KELBIA STAND MIRROR  
ANTIGUA TABLE LAMP  
KIOGA CHANDELIER  
TIGER RUG



MORNE BED  
MORNE NIGHT TABLE



WADDI POUFS  
MORNE DRAWER UNIT  
MORNE NIGHT TABLE



**WILD** POUF  
**MORNE** DRAWER UNIT  
**LOGIPI** TABLE LAMP  
**ARTWORK** DECORATIVE ITEM  
**TIGER** RUG



VANITY, CULT OF BEAUTY  
AND PASSION FOR FASHION  
FIND THEIR PERFECT  
BALANCE IN NAKURU.  
A WALK-IN CLOSET MADE UP  
OF PANELS UPHOLSTERED  
WITH PRECIOUS SILKS  
OF THE COLLECTION,  
CHESTS OF DRAWERS AND  
COMFORTABLE SHELVING.  
A CELEBRATION OF THE  
SOPHISTICATED SPIRIT  
OF THE BRAND.











ANTIGUA DESK, WITH ITS SCULPTURAL DESIGN, IS THE PERFECT CENTERPIECE FOR PRESTIGIOUS WORKING SPACES. THE TOP AND CHEST OF DRAWERS FEATURE A GLOSSY GREY CARBALHO FINISHING. THE SNAKE HANDLES ARE A SIGNATURE ELEMENT OF THE LINE.



ANTIGUA DESK  
KEY WEST CHAIR  
WALL.2 MODULAR BOOKCASE  
WATAMU CONSOLE  
TRINIDAD MIRROR  
ASSAL SOFA  
INANDA POUF  
LOGIPI TABLE LAMP







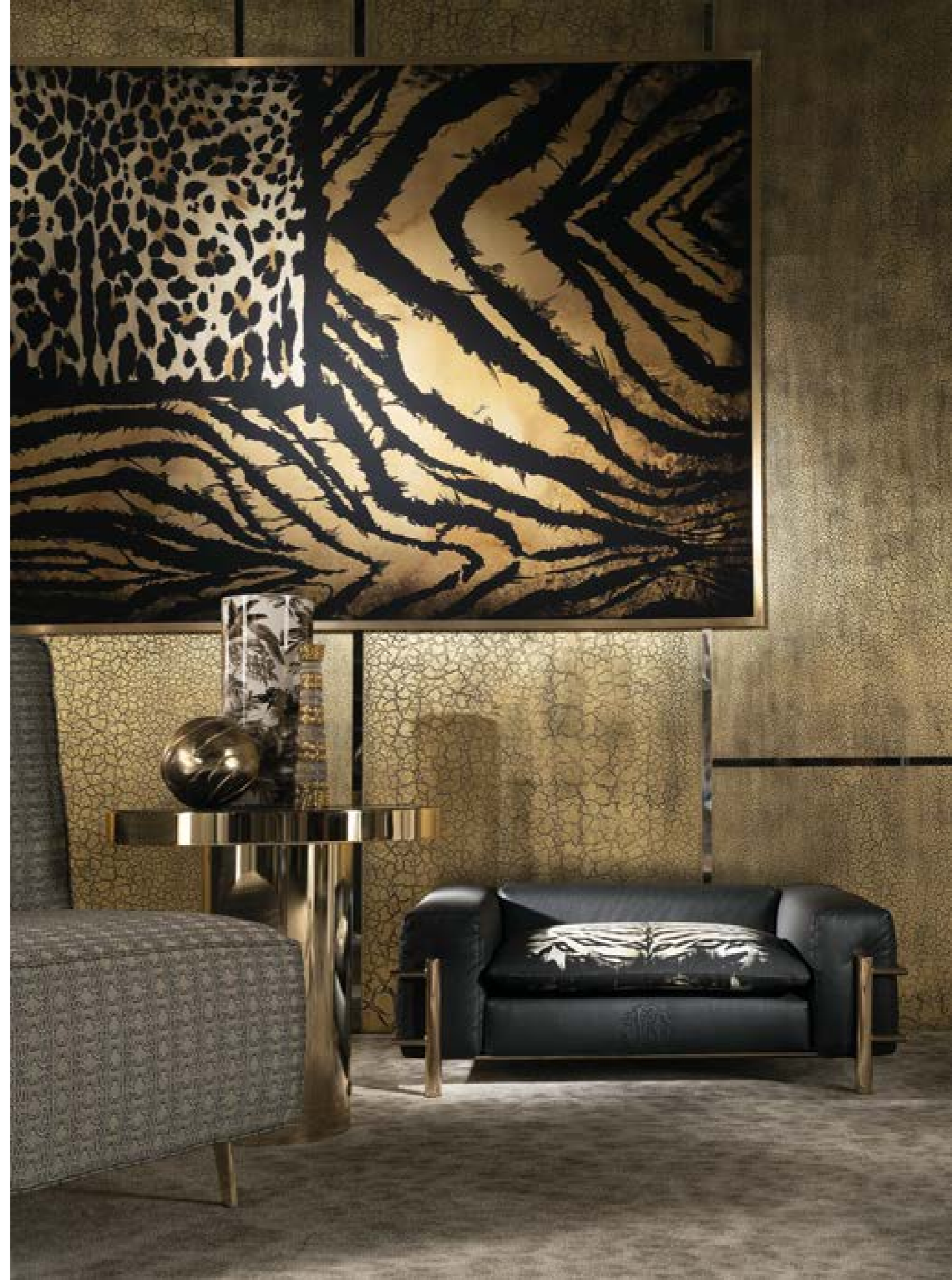
ACCESSORIES MAKE  
THE DIFFERENCE.  
ROBERTO CAVALLI HOME  
INTERIORS SELECTION OF  
COMPLEMENTS ALLOWS  
YOU TO ADD THE PERFECT  
TOUCH TO YOUR HOME  
DÉCOR, CREATING AN  
ENVIRONMENT WITH  
A BOLD, OPULENT  
AND GLAMOUROUS  
ATMOSPHERE







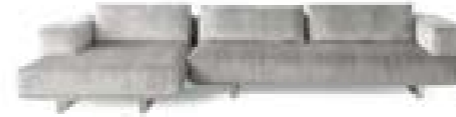
WILD DOG BED - SQUARE DOG BED  
SAHARA LOW TABLE  
UNITED STATES OF CAVALLI PRINT





SOFAS / ARMCHAIRS

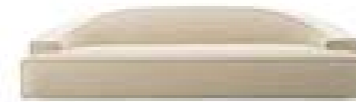
**ARUBA** (page 27, 29-31)



Sectional sofa with structure in poplar wood and expansive polyurethane foam. Upholstery in fabric cat. B Velvet Paul Jaguar Printed col. 010 Silver. Optional stripes on the seat. Legs in transparent plexiglass.

**C.ARU.213.AHX + C.ARU.213.DHX**  
 L 380 D 170 H 85 cm  
 L 149 3/4 D 66 3/4 H 33 1/2 in

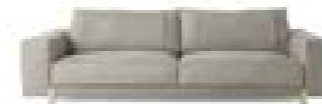
**ASSAL** (page 5-9, 248)



3-seater sofa with structure in solid poplar wood, multilayer pine wood and expansive polyurethane foam. Upholstery in leather cat. A Sauvage col. Avorio with decorative stitching along the perimeter. Optional RC Snake embroidery on the backrest.

**C.ASL.211.AAX**  
 L 295 D 122 H 71 cm  
 L 116 D 47 3/4 H 28 in

**CAICOS** (page 28, 32-33, 35, 37-39)



3-seater sofa with structure in poplar wood and expansive polyurethane foam. Upholstery in leather cat. A Hippo col. 6503. Engraved RC logo on metal feet with gold finishing.

**C.CAI.211.ABX**  
 L 270 D 110 H 78 cm  
 L 106 19/64 D 43 5/16 H 30 45/64 in

**CLIFTON** (page 55-59)



3-seater sofa with structure in solid poplar wood, solid fir wood with Masonite and expansive polyurethane foam. Structure and seat upholstery in fabric cat. A Silvana Scattered Sand. Back cushions in fabric cat. A Jacquard Deni col. B1. Feet in laser-cut iron with Gold finishing.

**C.CLI.211.AAX**  
 L 280 D 100 H 80 cm  
 L 110 1/4 D 39 1/2 H 31 1/2 in

**CLIFTON** (page 89-93)



3-seater sofa with structure in solid poplar wood and solid fir wood. Seat in expansive polyurethane foam and back cushions in goose down. Upholstery in leather cat. B Cocco Vintage col. 28. Feet in laser-cut iron with Gold finishing.

**C.CLI.211.ABX + C.COM.962.CMX**  
 L 280 D 100 H 80 cm  
 L 110 1/4 D 39 1/2 H 31 1/2 in

**CLIFTON** (page 90, 95)



Armchair with structure in solid poplar wood and solid fir wood. Upholstery in leather cat. A Vintage col. 3005, with "Spiga" quilting on the internal and external structure. Seat in expansive polyurethane foam with upholstery in leather cat. B Cocco Vintage col. 28. Back cushion in goose down with upholstery in leather cat. B Cocco Vintage col. 28. Feet in laser-cut iron with Gold finishing.

**C.CLI.221.ABX + C.COM.962.DMX**  
 L 89 D 96 H 80 cm  
 L 35 D 37 3/4 H 31 1/2 in

**DARLINGTON** (page 101, 106-107, 109)



2-seater sofa with structure in solid poplar wood and multilayer pine wood. Seat in expansive polyurethane foam with upholstery in leather cat. B Touch col. Black with capitonné. Roll cushions and armrests in expansive polyurethane foam with upholstery in leather cat. B Touch col. Black. Piping and decorative belts in leather cat. B Nabuk col. Cream. Back cushions in goose down with upholstery in fabric cat. B Silk Satin RC Wild Jaguar col. Natural. Piping in leather cat. B Nabuk col. Cream. Feet in laser-cut metal with Brushed Bronze finishing.

**C.DRL.211.BBX**  
 L 240 D 120 H 80 cm  
 L 94 1/2 D 47 1/4 H 31 1/2 in

## DARLINGTON.2 (page 99-105)



**C.DR2.213.AAX + C.DR2.213.FAX + C.COM.964.CMX**

L 456 D 240 H 83 cm  
L 179 1/2 D 94 1/2 H 32 3/4 in

## INANDA (page 117-121)



**C.IND.211.ABX**

L 260 D 100 H 85 cm  
L 102 1/3 D 39 1/2 H 33 1/2 in

## INANDA (page 42, 44, 48-51)



**C.IND.221.ABX**

L 77 D 76 H 80 cm  
L 30 1/3 D 29 3/4 H 31 1/2 in

## KINGSTON (page 61, 63b, 66-67, 69)



**C.KIN.211.BBX**

L 236 D 124 H 62 cm  
L 92 3/4 D 48 3/4 H 24 1/2 in

## KINGSTON (page 62, 64-65)



**C.KIN.213.KBX + C.KIN.213.HHX + C.KIN.213.FHX + C.KIN.213.RBX (2x) + C.KIN.213.EHX + C.KIN.213.GHX + C.KIN.213.TBX**

L 406 D 214 H 62 cm  
L 159 3/4 D 84 1/4 H 24 1/2 in

## KRUGER (page 15-21)



**C.KRU.211.ABX**

L 290 D 107 H 74 cm  
L 114 1/4 D 42 H 29 1/4 in

## MALAWI (page 125-128)



**C.MAW.213.ABX + C.MAW.213.BBX**

L 260 D 103 H 67 cm  
L 102 1/3 D 40 1/2 H 26 1/2 in

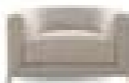
## MANHATTAN (page 73-77)



**C.MAN.211.CGX**

L 263 D 113 H 78 cm  
L 103 3/4 D 44 1/2 H 30 3/4 in

## MANHATTAN (page 75b, 78-79)



**C.MAN.221.AGX**

L 108 D 95 H 65 cm  
L 42 1/2 D 37 1/2 H 25 3/4 in

## SMOKING.2 (page 81-85, 87)



**C.SM2.211.AGX**

L 260 D 113 H 60 cm  
L 102 1/2 D 44 1/2 H 23 1/2 in

## VIKTORIA (page 41-45, 47)



**C.VIK.213.ABX + C.VIK.213.EBX + C.VIK.213.FBX**

L 500 D 410 H 70 cm  
L 196 3/4 D 161 1/2 H 27 1/2 in

## ARMCHAIRS

### CURAÇÃO (page 16, 22, 25)



**C.CUR.221.AGX**

L 100 D 91 H 72 cm  
L 39 1/4 D 35 3/4 H 28 1/3 in

### CURAÇÃO (page 29, 33, 36, 57)



**C.CUR.223.AGX**

L 81 D 95 H 100 cm  
L 31 1/4 D 37 1/3 H 39 1/2 in

3-seater sofa with structure in solid poplar wood and expansive polyurethane foam. Upholstery in fabric cat. A Anna col. Sophisticated Neutral. Feet in laser-cut metal with Brushed Gold finishing.

Armchair with structure in solid poplar wood and expansive polyurethane foam. Upholstery in fabric cat. A Anna col. Sophisticated Neutral. Feet in laser-cut metal with Brushed Gold finishing.

3-seater sofa with structure in solid poplar wood and expansive polyurethane foam. Upholstery in fabric cat. A Anna col. Sophisticated Neutral. Back cushions exterior upholstery in jacquard fabric cat. A Deni col. A1. Base in MDF with matt Black Lacquered finishing.

Sectional sofa with structure in metal and poplar wood. Seat upholstery in fabric cat. A Jacquard Deni col. B1. Backrest cushions upholstery in leather cat. B Nabuk col. Ash Grey. Feet with Gold finishing and metal shelves with Brushed Bronze finishing.

Armchair with structure in poplar wood and expansive polyurethane foam. Upholstery in fabric cat. A Velvet RC Zebrina col. Natural. Feet in metal with Gold finishing.

Bergere with structure in poplar wood and expansive polyurethane foam. Upholstery in fabric cat. A Jacquard Meg col. B2. Feet in metal with Gold finishing.

## CURAÇAO

 (page 118, 122-123)

**C.CUR.223.AGX**  
L 81 D 95 H 100 cm  
L 31 1/4 D 37 1/3 H 39 1/2 in

Bergere with structure in poplar wood and expansive polyurethane foam. Internal upholstery in fabric cat. B velvet Paul Jaguar Printed col. 406 Black. External upholstery in fabric cat. B velvet Paul col. 406 Black. Feet in metal with Gold finishing.

## DAVIS

 (page 204, 208)

**C.DAV.211.AHX**  
L 68 D 90 H 82 cm  
L 26 3/4 D 35 1/2 H 32 1/3 in

Armchair with structure in metal with Brushed Dark Bronze finishing. Seat and backrest in multilayer poplar wood and expansive polyurethane foam. Upholstery in fabric cat. B Silk Satin RC Karen col. 2.

## DAVIS

 (page 17, 21)

**C.DAV.211.AGX**  
L 68 D 90 H 82 cm  
L 26 3/4 D 35 1/2 H 32 1/3 in

Armchair with structure in metal with Gold finishing. Seat and backrest in multilayer poplar wood and expansive polyurethane foam. Upholstery in fabric cat. A Jacquard Monogram col. Champagne.

## FIJI

 (page 119)

**C.FIJ.221.AHX**  
L 75 D 90 H 82 cm  
L 29 1/2 D 35 1/2 H 32 1/3 in

Armchair with structure in poplar wood and expansive polyurethane foam. Upholstery in fabric cat. B Silk Satin RC Wild Zebra col. Natural. Base in laser-cut metal with Brushed Bronze finishing.

## GUAM

 (page 220, 224-225)

**C.GUA.223.AHX**  
L 68 D 80 H 104 cm  
L 26 3/4 D 31 1/2 H 41 in



**C.GUA.222.AHX**  
L 45 D 60 H 39 cm  
L 26 3/4 D 31 1/2 H 41 in

Bergere and foot rest with structure in multilayer poplar wood and expansive polyurethane foam. Upholstery in fabric cat. B Silk Satin RC Wild Zebra col. Natural. Feet in laser-cut metal with Gold finishing.

## KEY WEST

 (page 63-64, 71, 74)

**C.KEY.221.AGX**  
L 76 D 89 H 83 cm  
L 29 3/4 D 35 H 32 3/4 in

Armchair with structure in curved multilayer wood and expansive polyurethane foam. Upholstery in fabric cat. A Velvet RC Zebrina col. Natural. Back with steel slab in Gold finishing. Legs in solid beech wood with Embossed Black Lacquered finishing. Swivel mechanism.

## MACLAINE

 (page 129-131)

**C.MAC.221.AHX**  
L 100 D 87 H 90 cm  
L 39 1/2 D 34 1/4 H 35 1/2 in

Armchair with structure in poplar wood and expansive polyurethane foam. Upholstery in fabric cat. B Silk Satin RC Wild Zebra col. Natural with piping in leather cat. B Touch col. Black. Base in laser-cut metal with Gold finishing.

## PAPEETE

 (page 114-115)

**C.PAP.224.AGX**  
L 176 D 63 H 84 cm  
L 69 1/3 D 24 3/4 H 33 in

Chaise longue with structure in calendered iron tubing with Glossy Gold finishing. Seat in curved wood Esaflex® and variable thickness high density expansive polyurethane foam. Upholstery in fabric cat. A Velvet Wild Jaguar col. Natural. Headrest cushion in high density expansive polyurethane upholstered in leather cat. B Touch col. Black with RC Snake embroidery. Counterbalance in brass with Gold finishing and leather col. Black.

## SIORAF

 (page 212)

**C.SIO.221.ABX**  
L 97 D 96 H 86 cm  
L 38 D 37 3/4 H 34 in

Armchair with structure in cast brass with Gold finishing. Seat in multilayer poplar wood and expansive polyurethane foam. Upholstery in leather cat. B Touch col. Sand.

## SNAKE

 (page 52-53)

**C.SNA.221.ABX**  
L 80 D 105 H 80 cm  
L 31 1/2 D 41 1/3 H 31 1/2 in

Structure in poplar wood and foam. Upholstery in leather cat. B Tuscanly col. Ivory with internal back in capitonné with metal plates in gold finishing. One central RC metal plate with Swarovski crystals in gold finishing. Snake arms and feet in cast brass in gold finishing.

## TIFNIT

 (page 91b, 96-97)

**C.TIF.221.ABI + C.COM.841.CMX**  
L 78 D 96 H 86 cm  
L 30 3/4 D 37 3/4 H 34 in

Armchair with structure in poplar wood and expansive polyurethane foam. External upholstery in leather cat. B Touch col. Sand. Internal upholstery in fabric cat. A Velvet RC Tiger col. Beige. Structural lower-back cushion upholstered in leather cat. B Touch col. Black with RC Snake embroidery. Feet in tapered iron with Gold finishing.

## WILD

 (page 10-11)

**C.WIL.221.AB1**  
L 64 D 66 H 79 cm  
L 25 D 26 H 31 in

Armchair with structure in Polimex. Seat in variable thickness high density expansive polyurethane foam. Upholstery in leather cat. B Touch col. Sand with metallic element in zama alloy with polished galvanic Gold finishing. Inner part of seat base upholstered in fabric cat. B Silk Satin RC Wild Jaguar col. Beige.

## WILD

 (page 226-227)

**C.WIL.221.AB1**  
L 64 D 66 H 79 cm  
L 25 D 26 H 31 in

Armchair with structure in Polimex. Seat in variable thickness high density expansive polyurethane foam. Upholstery in leather cat. B Touch col. Black with metallic element in zama alloy with polished galvanic Gold finishing. Inner part of seat base upholstered in fabric cat. B Silk Satin RC Wild Jaguar col. Natural.

## WINGS

 (page 101, 105, 110-111)

**C.WIN.221.ABX**  
L 145 D 105 H 75 cm  
L 57 D 41 1/3 H 29 1/2 in

Armchair in multilayer poplar wood and expansive polyurethane foam. Upholstery in leather cat. B Cocco col. 5. Base in cast metal with Brushed Bronze finishing.

## WINGS (page 112-113)



**C.WIN.221.AHX**  
L 145 D 105 H 75 cm  
L 57 D 41 1/3 H 29 1/2 in

Armchair in multilayer poplar wood and expansive polyurethane foam. Upholstery in fabric cat. A Velvet RC Wild Jaguar col. Natural. Base in cast metal with Brushed Gold finishing.

## POUFS

### HERA.2 (page 205)



**C.HE2.222.AHX**  
L 50 D 50 H 47 cm  
L 19 2/3 D 19 2/3 H 18 1/2 in

Pouf with structure in poplar wood and foam. Upholstery in fabric cat. B Silk Satin RC Karen col. 2. Base in MDF with matt Black Laquered finishing.

### INANDA (page 6, 118, 121, 127, 129, 248, 252-253)



**C.IND.222.ABX**  
Ø 40 H 47 cm  
Ø 15 3/4 H 18 1/2 in

Pouf with structure in solid poplar wood and expansive polyurethane foam. Seat upholstery in fabric cat. A Velvet RC Wild Jaguar col. Natural. Side upholstery in leather cat. B Touch col. Black. Metal elements and base with Gold finishing.

### INANDA (page 127)



**C.IND.222.ABX**  
Ø 40 H 47 cm  
Ø 15 3/4 H 18 1/2 in

Pouf with structure in solid poplar wood and expansive polyurethane foam. Upholstery in leather cat. B Touch col. Black. Metal elements with Gold finishing. Wooden base lacquered in gold finishing.

### LIMBO (page 16-17, 22-23)



**C.LIM.222.HNX**  
Ø 82 H 40 cm  
Ø 32 1/4 H 15 3/4 in

Pouf with structure in multilayer poplar wood, multilayer pine wood and expansive polyurethane foam. Upholstery with capitonné in fabric cat. B Jacquard Cheetah col. Black, fabric cat. A Paul col. 406 Black, leather cat. B Touch col. Sand and leather cat. B Tuscany col. Ivory. Base in MDF with matt Black Lacquered finishing.

### LIMBO (page 63-64, 68, 83, 197, 201)



**C.LIM.222.HNX**  
Ø 82 H 40 cm  
Ø 32 1/4 H 15 3/4 in

Pouf with structure in multilayer poplar wood, multilayer pine wood and expansive polyurethane foam. Upholstery with capitonné in fabric cat. A Jacquard Deni col. AI, fabric cat. B Jacquard Audrey col. Natural, leather cat. B Touch col. Sand and leather cat. B Tuscany col. Ivory. Base in MDF with matt Black Lacquered finishing.

### LIMBO (page 56, 75)



**C.LIM.222.GBX**  
Ø 50 H 40 cm  
Ø 19 2/3 H 15 3/4 in

Pouf with structure in multilayer poplar wood, multilayer pine wood and expansive polyurethane foam. Upholstery with capitonné in leather cat. B Tuscany col. Ivory. Base in MDF with matt Black Lacquered finishing.

## MALAWI (page 212-213)



**C.MAW.222.ABX**  
L 134 D 48 H 40 cm  
L 52 3/4 D 19 H 15 3/4 in

Pouf with structure in solid poplar wood and expansive polyurethane foam. Upholstery in leather cat. B Touch col. Sand. Metal decorative elements with Gold finishing.

## SHARPEI (page 240-241)



**C.SHA.222.ABX**  
ø 142 H 35 cm  
Ø 56 H 13 2/3 in

Structure in poplar wood and foam. Upholstery in leather cat. B Touch col. Black. Central metal sphere in Gold finishings.

## SIORAF (page 166)



**C.SIO.222.ABX**  
Ø 40 H 49 cm  
Ø 15 3/4 H 19 1/3 in

Pouf with structure in cast brass with Gold finishing. Seat in multilayer poplar wood and expansive polyurethane foam. Upholstery in leather cat. B Nabuk col. Anthracite and fur.

## WADDI (page 205, 231, 234)



**C.WAD.222.ABX**  
L 50 D 50 H 47 cm  
L 19 2/3 D 19 2/3 H 18 1/2 in

Pouf with structure in multilayer fir wood and expansive polyurethane foam. Upholstery in leather cat. B Touch col. Black with "Spiga" quilting. Base in MDF with matt Black Lacquered finishing.

## WILD (page 221-223, 237)



**C.WIL.222.AA1**  
Ø 80 H 42 cm  
Ø 31 1/2 H 16 1/2 in

Pouf with structure in solid poplar wood, multilayer pine wood and expansive polyurethane foam. Side upholstery in leather cat. A Sauvage col. Tenebra, with capitonné and metallic element in zama alloy with polished galvanic gold finishing. Seat upholstery in fabric cat. A Velvet RC Wild Jaguar col. Natural. Base in MDF with matt Black Lacquered finishing.

## LOW TABLES

### COOPER (page 42, 44, 48-49, 62, 64-65)



**C.COO.232.A1X**  
Ø 75 H 50 cm  
Ø 29 1/2 H 19 2/3 in

Side table with structure in metal with Brushed Dark Bronze finishing. Top in Grey Agate.

### COOPER (page 83, 85, 87, 119-120, 122, 220, 224)



**C.COO.232.AE1**  
Ø 75 H 50 cm  
Ø 29 1/2 H 19 2/3 in

Side table with structure in metal with Gold finishing. Top in multilayer wood veneered in glossy Grey Carbalho.

## INAGUA (page 63, 63b, 64, 66-68)



**C.INA.231.A6X**  
L 130 D 113 H 35 cm  
L 51 1/4 D 44 1/2 H 13 2/3 in

**C.INA.232.A6X**  
L 80 D 70 H 50 cm  
L 31 1/2 D 27 1/2 H 19 2/3 in

Low tables with structure in MDF with matt Ivory Lacquered finishing, covered in Grey Porcelain Gres. Metal feet with Gold finishing.

## JIPE (page 101, 105-106, 111)



**C.JIP.231.ATX**  
Ø 140 H 35 cm  
Ø 55 H 13 2/3 in

Central table with structure in epoxy resin with Antique Bronze finishing. Top in marble cat. A Travertino Navona.

## JIPE (page 101-106)



**C.JIP.232.ATX**  
L 84 D 79 H 51 cm  
L 33 D 31 H 20 in

**C.JIP.232.BTX**  
L 68 D 68 H 51 cm  
L 26 3/4 D 26 3/4 H 20 in

Side tables with structure in epoxy resin with Antique Bronze finishing. Top in marble cat. A Black & Gold.

## MAUI (page 7, 9, 101b, 107-109, 118)



**C.MAU.232.ALX**  
Ø 84 H 50 cm  
Ø 33 H 19 2/3 in

Side table with structure in hammered brass tubing with Gold finishing. Decorative brass leaves with Gold finishing. Top in bronzed glass.

## MERU (page 11-13)



**C.MER.231.A9X**  
L 128 D 76 H 31 cm  
L 50 1/3 D 30 H 12 1/4 in

Central table with structure in polyurethane resin with Antique Bronze finishing. Top in extra clear glass with back-printed design on ivory background.

## PAJE (page 17-21, 25)



**C.PAJ.232.A6X**  
L 82 D 72 H 36 cm  
L 32 1/4 D 28 1/3 H 14 1/4 in

**C.PAJ.232.B6X**  
L 67 D 58 H 46 cm  
L 26 1/2 D 22 3/4 H 18 1/8 in

Side tables with structure in cylindrical section iron rod and sheet iron in Gold finishing. Top in Ivory Porcelain Gres on the upper part and Ivory matt lacquered finishing on lower part. Brass plate with RC monogram on the top.

## RAGALI (page 29, 32-34)



**C.RAG.231.ATX**  
L 160 D 113 H 15 cm  
L 63 D 44 1/2 H 5 3/4 in

Central table with structure and lower part of the top in MDF with Antique Bronze finishing. Top in marble cat. A Bianco Carrara.

## RAGALI (page 75, 126, 128-129, 132-133)



**C.RAG.231.ATX**  
L 160 D 113 H 15 cm  
L 63 D 44 1/2 H 5 3/4 in

Central table with structure and lower part of the top in MDF with Antique Bronze finishing. Top in marble cat. A Black & Gold.

## RAGALI (page 29, 32, 36)



**C.RAG.232.ATX**  
Ø 57 H 50 cm  
Ø 22 1/2 H 19 2/3 in

Side table with structure in iron rods with Gold finishing. Top in marble cat. A Bianco Carrara.

## RAGALI (page 78, 126-127, 129)



**C.RAG.232.ATX**  
Ø 57 H 50 cm  
Ø 22 1/2 H 19 2/3 in

Side table with structure in iron rods with Gold finishing. Top in marble cat. A Black & Gold.

## RAGALI.2 (page 29, 32-34, 82, 84, 86)



**C.RA2.231.BTX**  
L 158 D 89 H 22 cm  
L 63 D 44 1/2 H 5 3/4 in

Central table with structure and lower part of the top in MDF with Antique Bronze finishing. Top in marble cat. A Bianco Carrara with "scagliola" pattern.

## RAGALI.2 (page 28, 35, 3,7)



**C.RA2.232.ATX**  
Ø 57 H 50 cm  
Ø 22 1/2 H 19 2/3 in

Side table with structure in iron rods with Gold finishing. Top in marble cat. A Bianco Carrara with "scagliola" pattern.

## SAHARA (page 197, 259)



**C.SAH.232.CMX**  
Ø 55 H 53 cm  
Ø 21 2/3 H 20 3/4 in

Side table with structure in laser-cut and calendered sheet iron with Gold finishing. Lower part of the top in MDF with matt Black Lacquered finishing and upper part of the top made of hand bevelled bronzed mirrors.

## SAHARA (page 16-17, 23)



**C.SAH.232.CO1**  
Ø 55 H 53 cm  
Ø 21 2/3 H 20 3/4 in

**C.SAH.232.BO1**  
Ø 100 H 40 cm  
Ø 39 1/3 H 15 3/4 in

Side tables with structure in laser-cut and calendered sheet iron with Gold finishing. Lower part of the top in MDF with matt Black Lacquered finishing. Top in Sahara Noir polished marble with partial engraved RC monogram.



## SIORAF (page 56-58, 118-119, 121-122)



**C.SIO.232.ASX**  
Ø 50 H 60 cm  
Ø 19 2/3 H 23 1/2 in



**C.SIO.231.ASX**  
Ø 105 H 35 cm  
Ø 41 1/3 H 13 2/3 in

Low tables in cast brass with Gold finishing. Top in MDF veneered in Wengé Dyed Oak.

## TURKANA (page 43-44, 46)



**C.TUK.232.A2X**  
L 87 D 93 H 25 cm  
L 34 1/4 D 36 3/4 H 9 3/4 in

Central table with structure and lower part of the top in MDF with Antique Bronze finishing. Top in Emerald Onyx.

## TURKANA (page 6, 43-44, 46)



**C.TUK.231.B2X**  
L 130 D 88 H 19 cm  
L 51 1/4 D 34 2/3 H 7 1/2 in

Central table with structure and lower part of the top in MDF with Antique Bronze finishing. Top in White Onyx.

## TURKANA (page 43-46)



**C.TUK.231.AOX**  
L 139 D 81 H 13 cm  
L 54 2/3 D 31 3/4 H 5 1/4 in

Central table with structure and lower part of the top in MDF with Antique Bronze finishing. Top in marble cat. B Silk Georgette Blue.

## TURKANA (page 6, 43-44, 46, 75)



**C.TUK.231.C2X**  
L 158 D 103 H 7 cm  
L 62 1/4 D 40 2/3 H 2 3/4 in

Central table with structure and lower part of the top in MDF with Antique Bronze finishing. Top in Grey Onyx.

## VANUATU (page 28, 31, 33, 57, 59, 63b, 67, 69)



**C.VAN.232.AMX**  
L 54 D 54 H 50 cm  
L 21 1/2 D 21 1/4 H 19 3/4 in

Side table with structure in hammered brass tubing with Gold finishing. Top in cast brass with crocodile pattern.

## WATAMU (page 91-93, 97)



**C.WAT.231.A8X**  
L 140 D 74 H 25 cm  
L 55 1/4 D 29 1/4 H 9 2/3 in  
**C.WAT.231.BQA**  
L 80 D 80 H 36 cm  
L 31 1/2 D 31 1/2 H 14 1/4 in

Set of two central tables.  
Higher element with structure in calendered iron with laser-cut animal design, with Brushed Dark Bronze finishing.  
Lower element in curved multilayer wood veneered in glossy Grey Carbalho.

## WATAMU (page 90, 91b, 92, 94-95)



**C.WAT.232.A8X**  
L 60 D 52 H 48 cm  
L 23 1/2 D 20 1/2 H 19 in  
**C.WAT.232.BQA**  
L 66 D 36 H 58 cm  
L 26 D 14 1/4 H 22 1/4 in

Set of two side tables.  
Higher element with structure in calendered iron with laser-cut animal design, with Brushed Dark Bronze finishing.  
Lower element in curved multilayer wood veneered in glossy Grey Carbalho.

## YOA (page 75-77)



**C.YOA.232.ALX**  
Ø 65 H 52 cm  
Ø 25 2/3 H 20 1/2 in

Side table with structure in patinated cast brass. Top in bronzed glass with silkscreened RC monogram.

## CONSOLES

### MORNE (page 196, 201)



**C.MOE.522.A82**  
L 170 D 48 H 85 cm  
L 67 D 19 H 33 1/2 in

Console with structure in MDF veneered in glossy Grey Carbalho externally and with matt Black Lacquered finishing internally. Drawers with inner cover in anthracite microfibre. Drawers front in MDF with Antique Bronze finishing.

### SIORAF (page 62, 70-71, 74)



**C.SIO.521.AOX**  
L 170 D 44 H 85 cm  
L 67 D 17 1/3 H 33 1/2 in

Console with structure in cast brass with Gold finishing. Top in marble cat. B Bamboo with undertop in MDF with matt Black lacquered finishing.

### SOHO (page 131)



**C.SOH.521.AMX**  
L 170 D 44 H 85 cm  
L 67 D 17 1/3 H 33 1/2 in

Console with structure in metal with Black Chrome finishing. Top in smoked glass.

### TRINIDAD (page 38-39)



**C.TRI.521.C2X**  
L 180 D 45 H 60 cm  
L 71 D 17 2/3 H 23 1/2 in

Console with structure in metal with Gold finishing. Top in White Onyx.

## WATAMU (page 6, 248, 252-253)



### C.WAT.521.A8X

L 133 D 45 H 73 cm  
L 52 1/3 D 17 2/3 H 28 2/3 in

### C.WAT.521.BQA

L 139 D 36 H 85 cm  
L 54 2/3 D 14 H 33 1/2 in

Set of two consoles. Higher element in calendered iron with laser-cut animal design, with Brushed Dark Bronze finishing. Lower element in curved multilayer wood veneered in glossy Grey Carbalho.

## DINING TABLES

## ANTIGUA (page 153-155, 157)



### C.ANT.122.C8A

L 300 D 110 H 77 cm  
L 118 D 43 1/3 H 30 1/3 in

Dining table with structure in iron rods with Gold finishing. Lower part of the top in MDF with matt lacquered finishing. Top in MDF veneered in glossy Grey Carbalho.

## BAOBAB (page 135-139)



### C.BAO.123.AOB

Ø 180 H 75 cm  
Ø 71 H 29 1/2 in

Dining table with structure in cylindrical section calendered iron rod with Gold finishing. Top consisting of five irregularly shaped elements in marble cat. B Versylis with undertop in MDF with matt Ivory lacquered finishing.

## COMORE (page 143-148)



### C.CMR.122.C6X

L 240 D 110 H 75 cm  
L 94 1/2 D 43 1/3 H 29 1/2 in

Dining table with bases and top in multi-layer wood. Finishing in Ivory Porcelain Gres undertop in MDF with matt Ivory lacquered finishing. Gold metal details.

## KIBO (page 175, 177-179)



### C.KIB.123.A8X

Ø 180 H 76 cm  
Ø 71 H 30 in

Dining table with structure in laser-cut calendered sheet iron with Brushed Bronze finishing. Top in MDF veneered in glossy Grey Carbalho, with inserts in folded laser-cut sheet iron with Brushed Bronze finishing. Lazy Susan in Grey Porcelain Gres, framed by a circular structure in sheet iron with Brushed Bronze finishing.

## NYOS (page 183-185)



### C.NYO.123.ATX

Ø 180 H 75 cm  
Ø 71 H 29 1/2 in

Dining table with base in curved calendered iron rods with Brushed Bronze finishing. Top in marble cat. A Black & Gold with lazy susan in Brushed Dark Bronze finishing. Lower part of the top in MDF with matt Black Lacquered finishing.

## SIORAF (page 161, 163, 165)



### C.SIO.123.AMX

Ø 180 H 77 cm  
Ø 71 H 30 2/3 in

Dining table with central base in cast brass with Gold finishing. Bronzed glass top.

## SIORAF (page 168-169, 171-172)



### C.SIO.122.B8X

L 250 D 110 H 75 cm  
L 98 1/2 D 43 1/3 H 29 1/2 in

Metal bases in cast brass with Gold finishing. Frame in calendered sheet iron with Gold finishing. Top in honeycomb (solid fir wood, honeycomb, MDF, iron reinforcements) in Eucalyptus Frisé veneered. Lower part of the top covered in microfibre.

## CHAIRS

## INANDA (page 144-149, 151)



### C.IND.132.AGX

L 60 D 62 H 80 cm  
L 23 1/2 D 24 1/3 H 31 1/2 in

Chair with structure in multilayer poplar wood. External upholstery in leather cat. B Touch col. Ivory. Internal upholstery in fabric cat. A Jacquard Deni col. D1. Seat band and cone-shaped legs in solid beech wood and solid oak wood with Ivory Embossed Ivory Lacquered finishing. Tips and piercing with Gold finishing.

## KEY WEST (page 161-165)



### C.KEY.132.AGX

L 59 D 61 H 78 cm  
L 23 1/4 D 24 H 30 3/4 in

Chair with structure in curved multilayer wood and expansive polyurethane foam. Upholstery in fabric cat. B Silk Satin RC Halle col. Beige. Back with steel slab in Gold finishing. Legs in solid beech wood with Embossed Black Lacquered finishing.

## KEY WEST (page 196, 249-251)



### C.KEY.132.AGX

L 59 D 61 H 78 cm  
L 23 1/4 D 24 H 30 3/4 in

Chair with structure in curved multilayer wood and expansive polyurethane foam. Upholstery in fabric cat. B Silk Satin RC Wild Jaguar col. Natural. Back with steel slab in Gold finishing. Legs in solid beech wood with Embossed Black Lacquered finishing.

## KEY WEST (page 163-165)



**C.KEY.132.AAX**  
L 59 D 61 H 78 cm  
L 23 1/4 D 24 H 30 3/4 in

Chair with structure in curved multilayer wood and expansive polyurethane foam. Upholstery in leather cat. A Vintage col. 1. Back with steel slab in Gold finishing. Legs in solid beech wood with Embossed Black Lacquered finishing.

## KEY WEST (page 189-193)



**C.KEY.132.AAX**  
L 60 D 54 H 100 cm  
L 23 1/2 D 21 1/4 H 39 1/2 in

Bar stool in curved multilayer wood and expansive polyurethane foam. Upholstery in fabric cat. A Velvet RC Zebrina col. Natural. Back with steel slab in Gold finishing. Legs in solid beech wood with Embossed Black Lacquered finishing. Swivel mechanism.

## KIVU (page 153, 155, 157)



**C.KIV.132.AAX**  
L 60 D 58 H 88 cm  
L 23 1/2 D 23 H 34 2/3 in

Chair in multilayer beech wood and expansive polyurethane foam. Upholstery in leather cat. A Glitter col. Pomice. Armrests in hammered brass with Gold finishing. Metal tips with Gold finishing.

## KIVU (page 153-157)



**C.KIV.132.AGX**  
L 60 D 58 H 88 cm  
L 23 1/2 D 23 H 34 2/3 in

Chair in multilayer beech wood and expansive polyurethane foam. Upholstery in fabric cat. A Jacquard Deni col. C1. Armrests in hammered brass with Gold finishing. Metal tips with Gold finishing.

## MACLAINE (page 184-185, 187)



**C.MAC.132.ABX**  
L 58 D 63 H 82 cm  
L 23 D 24 3/4 H 32 1/3 in

Chair with armrests with structure in curved multilayer poplar wood and expansive polyurethane foam. Upholstery in leather cat. B Touch col. Black. Legs in laser-cut metal with Brushed Bronze finishing.

## MACLAINE (page 183-185, 187)



**C.MAC.132.ABX**  
L 58 D 63 H 82 cm  
L 23 D 24 3/4 H 32 1/3 in

Chair with armrests with structure in curved multilayer poplar wood and expansive polyurethane foam. Upholstery in fabric cat. B Silk Satin RC Wild Jaguar col. Natural, with piping in leather cat. B Touch col. Black. Legs in laser-cut metal with Brushed Bronze finishing.

## SHIRA (page 136-138, 141)



**C.SHR.132.ABB**  
L 55 D 61 H 83 cm  
L 21 2/3 D 24 H 32 2/3 in

Chair with structure and tapered legs in calendered iron rods with Gold finishing. Seat in multilayer poplar wood and expansive polyurethane foam with upholstery in leather cat. B Touch col. Sand. Backrest in multilayer poplar wood and expansive polyurethane foam with internal upholstery in leather cat. B Touch col. Sand and external upholstery in fabric cat. A Jacquard Monogram col. Champagne.

## SHIRA (page 176-179)



**C.SHR.132.ABB**  
L 55 D 61 H 83 cm  
L 21 2/3 D 24 H 32 2/3 in

Chair with structure and tapered legs in calendered iron rods with Gold finishing. Seat in multilayer poplar wood and expansive polyurethane foam with upholstery in leather cat. B Touch col. Black. Backrest in multilayer poplar wood and expansive polyurethane foam with internal upholstery in leather cat. B Touch col. Black and external upholstery in fabric cat. B Silk Satin RC Wild Jaguar col. Natural.

## TEIDE (page 168-172)



**C.TEI.131.AGX**  
L 53 D 58 H 84 cm  
L 20 3/4 D 23 H 33 in

Chair with structure in iron rod with Gold finishing. Seat and backrest in multilayer poplar wood and expansive polyurethane foam. Seat and backrest upholstery in fabric cat. A Velvet RC Wild Zebra col. Beige. Back upholstery in leather cat. B Touch col. Sand.

## DAY STORAGE UNITS

### AZINGO (page 162, 166-167)



**C.AZI.116.AKX**  
L 119 D 50 H 150 cm  
L 46 3/4 D 19 2/3 H 59 in

Cabinet with structure in MDF with glossy Black Lacquered finishing. Monstera leaves handles in cast brass with Gold finishing. Interior covered in mirror and microfibre with shelves in smoked glass.

### KARIBA (page 189-193)



**C.KAB.241.ABX + C.COM.925.XMX**  
L 220 D 98 H 110 cm  
L 86 1/4 D 37 H 43 1/3 in

Bar counter in multilayer wood covered in leather cat. B Touch col. Sand with "Uma" quilting. Top in marble. Base, doors, and interior in sheet iron with Brushed Bronze finishing. Internal structure with Embossed Desert lacquered finishing.

## KASAI (page 136, 140)



**C.KAS.141.AGX**  
L 140 D 55 H 210 cm  
L 55 D 21 2/3 H 82 3/4 in

Showcase with structure in multilayer poplar wood covered in jacquard fabric cat. A Deni col. B1. Interior in microfibre with backrest in smoked mirror. Strip LED interior lighting. Doors and shelves in glass. JC1 handles with polished gold finishing.

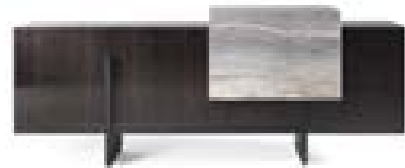
## KASAI (page 184)



**C.KAS.141.A8X**  
L 140 D 55 H 210 cm  
L 55 D 21 2/3 H 82 3/4 in

Showcase with structure in multilayer poplar wood veneered in glossy Grey Carbalho. Interior in microfibre with backrest covered in fabric cat. B Silk Satin RC Wild Jaguar col. Natural. Strip LED interior lighting. Doors and shelves in glass. JC1 handles with polished gold finishing.

## SOIRA (page 176, 180-181)



**C.SOI.113.A8X**  
L 240 D 56 H 97 cm  
L 94 1/2 D 22 H 38 1/4 in

Sideboard with structure in MDF veneered in glossy Grey Carbalho. Cube element covered in Porcelain Gres col. Grey. Interior covered in microfibre with shelves in bronzed glass. Base in MDF with Embossed Black Lacquered finishing. Lower base in iron with Brushed Bronze finishing.

## TONGA (page 145, 149)



**C.TON.115.A6X**  
L 120 D 50 H 150 cm  
L 47 1/4 D 19 2/3 H 59 in

Bar cabinet with structure in MDF covered in Porcelain Gres col. Ivory and in sheet steel with Gold finishing. Interior covered in microfibre and natural mirror with glass shelves.

## TONGA (page 144, 146, 150-151)



**C.TON.113.A6X**  
L 240 D 50 H 85 cm  
L 94 1/2 D 19 2/3 H 33 1/2 in

Sideboard with structure in MDF covered in Porcelain Gres col. Ivory and in sheet steel with Gold finishing. Interior covered in microfibre with glass shelves.

## VAAL (page 56, 154, 156, 158-159)



**C.VAA.113.A8X**  
L 250 D 53 H 83 cm  
L 94 1/2 D 19 2/3 H 33 1/2 in

Sideboard with structure in MDF in glossy Grey Carbalho veneered. Inserts in sheet iron with Gold finishing. Interior covered in anthracite microfibre with shelves in bronzed glass. Base in metal with Gold finishing.

## VAAL (page 169-171, 173)



**C.VAA.113.A8X**  
L 250 D 53 H 83 cm  
L 94 1/2 D 19 2/3 H 33 1/2 in

Sideboard with structure in MDF in glossy Eucalyptus Frisé veneered. Inserts in sheet iron with Gold finishing. Interior covered in microfibre with shelves in bronzed glass. Base in metal with Gold finishing.

## BOOKCASES

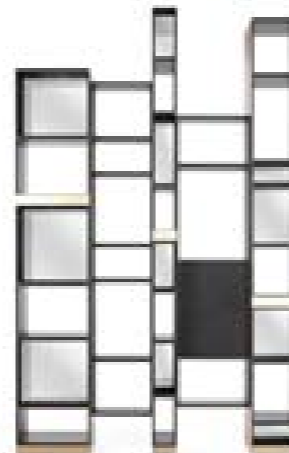
### ACAPULCO (page 29b, 30-31)



Modular bookcase with TV holder. Structure in MDF with Embossed Desert Lacquered finishing on the inside and covered in laminated metal with Brushed Gold finishing on the outside. Doors with front in MDF, covered in leather cat. B Touch col. Sand with "Stella" quilting. JC1 handles with polished Gold finishing. Back panels covered in fabric cat. B Silk Satin RC Zhanj col. 3.

**SPECIAL COMPOSITION**  
L 530 D 55 H 344 cm  
L 208 2/3 D 21 2/3 H 135 1/2 in

### ACAPULCO (page 101b, 107)



Modular bookcase with structure in MDF with Embossed Black Lacquered finishing on the inside and covered in laminated metal with Brushed Gold finishing on the outside. Doors with front in MDF, covered in leather cat. B Touch col. Black with "Stella" quilting. JC29 handle with polished Gold finishing. Back panels covered in natural mirror.

**C.AKA.542.AKX**  
L 230 D 55 H 344 cm  
L 90 3/4 D 21 2/3 H 135 1/2 in

## WALL.2 (page 6-7, 249)



Modular bookcase with structure in MDF. Horizontal modules veneered in glossy Grey Carbalho. Vertical supports covered in leather cat. B Cocco Vintage col. 28.

**C.WA2.542.A8X (2x) + C.WA2.542.B8X (6x)**  
**C.WA2.542.C8X (4x) + C.WA2.542.D8X (4x)**  
L 300 D 35 H 309 cm  
L 118 D 13 2/3 H 121 2/3 in

## BEDS

### ELGON (page 194-200)



Bed with headboard and bed frame in multilayer poplar wood, solid polar wood and solid fir wood. Padding in expansive polyurethane foam. Upholstery in leather cat. A Vintage col. 1, with inserts in the special finishing gold laminated leather.

**C.ELG.312.AAX**  
L 262 D 239 H 124 cm  
L 103 D 94 H 48 3/4 in

### MALAWI (page 219-223)



Bed with structure in solid poplar wood and expansive polyurethane foam. Upholstery in leather cat. B Touch col. Black. Metal decorative elements with Gold finishing.

**C.MAW.312.ABX**  
L 236 D 249 H 111 cm  
L 93 D 98 H 43 3/4 in

### MORNE (page 229-231, 233)



Bed with headboard in honeycomb veneered in glossy Grey Carbalho. Headboard cushions with core in aluminium and high density expansive polyurethane foam. Upholstery in fabric cat. B Silk Satin RC Wild Tiger col. Natural. Bed frame in multilayer fir wood and Masonite, with padding in foam rubber. Upholstery in leather cat. B Touch col. Black. RC Snake embroidery on the front part of the bed frame.

**C.MOE.312.AH8 + C.MOE.81A.AHX**  
L 263 D 229 H 110 cm  
L 103 3/4 D 90 H 43 1/3 in

## NILO (page 211-215)



**C.NIL.312.ABX**  
L 286 D 249 H 128 cm  
L 112 1/2 D 98 H 50 1/3 in

### SMOKING (page 203-207, 209)



**C.SMO.312.AGX**  
L 200 D 240 H 100 cm  
L 78 1/4 D 94 1/2 H 39 1/2 in

## NIGHT STORAGE UNITS

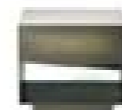
### DORIAN.2 (page 220-223)



**C.DO2.321.ABX**  
L 52 D 48 H 52 cm  
L 20 1/2 D 19 H 20 1/2 in

Night table with structure in MDF with glossy Black Lacquered finishing. Top in marble cat. A Black & Gold. JC1 handle with polished gold finishing.

### MARTINICA (page 204-206, 208)



**C.MAT.321.AKX**  
L 60 D 50 H 53 cm  
L 23 1/2 D 19 2/3 H 21 in



**C.MAT.321.BKX**  
L 60 D 50 H 53 cm  
L 23 1/2 D 19 2/3 H 21 in

Night table with structure in iron with Brushed Dark Bronze finishing. Storage element in MDF with glossy Ivory Lacquered finishing. One or two drawers with front covered in metal with Brushed Dark Bronze finishing.

### MORNE (page 230-231, 233, 235)



**C.MOE.321.A82**  
L 78 D 48 H 48 cm  
L 30 3/4 D 19 H 19 in



**C.MOE.321.A81**  
L 78 D 48 H 48 cm  
L 30 3/4 D 19 H 19 in

Night table with structure in MDF veneered in glossy Grey Carbalho externally and with matt Black Lacquered finishing internally. Drawer with inner cover in anthracite microfibre. Drawer front in MDF with Antique Bronze finishing or Patinated Bronze Python 3D Printed finishing. Shelf in bronzed glass.

## MORNE (page 234)

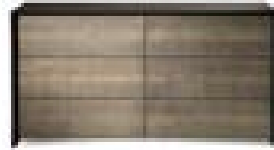


### C.MOE.331.B81

L 100 D 50 H 150 cm  
L 39 1/2 D 19 2/3 H 59 in

Drawer unit with structure in MDF veneered in glossy Grey Carbalho externally and with matt Black Lacquered finishing internally. Drawers with inner cover in anthracite microfibre. Drawers front in MDF with Patinated Bronze Python 3D Printed finishing.

## MORNE (page 236-237)



### C.MOE.331.A81

L 160 D 50 H 85 cm  
L 63 D 19 2/3 H 33 1/2 in

Drawer unit with structure in MDF veneered in glossy Grey Carbalho externally and with matt Black Lacquered finishing internally. Drawers with inner cover in anthracite microfibre. Drawers front in MDF with Patinated Bronze Python 3D Printed finishing.

## NAKURU (page 239-245)



Custom made modular walk-in closet with structure in multilayer wood. Back panel covered in fabric cat. B Velvet Paul col. Sand, Zebra printed. Shelves and drawer units in black lacquered finishing. Drawers front covered in fabric cat. B Silk Satin RC Karen col. 2. Jewel handles in lost-wax cast brass with polished champagne finishing. Hanging bars in metal. LED lighting system.

### WALK-IN CLOSET

L 340 D 300 H 300 cm  
L 134 D 118 H 118 in

## SAHARA.6 (page 213b, 217)

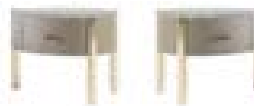


### C.SA6.331.ABX + C.COM.968.A2X

L 146 D 50 H 84 cm  
L 57 1/2 D 19 2/3 H 32 3/4 in

Drawer unit with structure and base in MDF covered in leather cat. B Touch col. Ash Grey. Drawers front in MDF with glossy Desert Lacquered finishing. Top in Grey Onyx. Feet in MDF with iron carter in Gold finishing.

## TRINIDAD (page 196, 198, 200, 212-215)



### C.TRI.321.CBX + C.COM.963.C2X

### C.TRI.321.DBX + C.COM.963.D2X

L 64 D 44 H 52 cm  
L 25 1/4 D 17 1/3 H 20 1/2 in

Night table with structure in curved multilayer poplar wood covered in leather cat. B Touch col. Ash Grey. Drawer with JC424 handle in polished gold finishing. Top in Grey Onyx. Feet in iron rod with Gold finishing.

## BEAUTY

## UMA (page 28, 32, 36)



### C.UMA.551.AMX

L 78 D 3 H 260 cm  
L 30 3/4 D 1 1/4 H 102 1/3 in

### C.UMA.551.BMX

L 88 D 3 H 225 cm  
L 34 2/3 D 1 1/4 H 88 1/2 in

Screen in laser-cut iron with Brushed Dark Bronze finishing.

## HOME OFFICE

## ANTIGUA (page 247-251)



### C.ANT.411.F8B

L 200 D 89 H 77 cm  
L 78 3/4 D 35 H 30 1/3 in

Desk with structure composed of top and two bases. One base made of iron rods of different sizes in round and square sections, with Gold finishing. One base with three drawers in curved multilayer wood, veneered in glossy Grey Carbalho. Drawers with inner cover in anthracite microfibre. JC424 jewel handles in lost-wax cast brass with polished Gold finishing. Top in multilayer wood veneered in glossy Grey Carbalho. Lower part of the top covered in leather cat. A Sauvage col. Tenebra.

## LIGHTS

## ANTIGUA (page 63b, 66, 154-155, 157)



### C.ANT.611.AMX

Ø 26 H 125 cm  
Ø 10 1/4 H 49 1/4 in

Chandelier with metal elements in Gold and Black Chrome finishing.

## ANTIGUA (page 28, 31, 33, 37, 103, 106, 205-206, 230)



### C.ANT.631.AMX

Ø 36 H 55 cm  
Ø 10 1/4 H 49 1/4 in

Table lamp with metal elements in Gold and Black Chrome finishing.

**BATTEN** (page 144-147)



**C.BAT.611.AMX**  
Ø 80 H 120 cm  
Ø 31 1/2 H 47 1/4 in

Chandelier with structure and chains in metal with Gold finishing. Decorative elements in brass with Gold finishing and in blown glass with animal design.

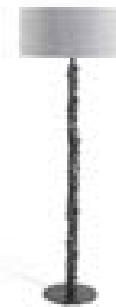
**BRICK** (page 57, 59)



**C.BRI.631.AMX**  
Ø 50 H 78 cm  
Ø 19 2/3 H 30 1/4 in

Table lamp with structure in iron and brass with Brushed Dark Bronze finishing. Shade in shantung silk col. Silver.

**BRICK** (page 6)



**C.BRI.621.AMX**  
Ø 55 H 156 cm  
Ø 21 1/3 H 61 1/2 in

Floor lamp with structure in iron and brass with Brushed Dark Bronze finishing. Shade in shantung silk col. Silver.

**CORAL** (page 16, 25, 63, 71, 252, 260)



**C.CRL.621.AMX**  
Ø 55 H 156 cm  
Ø 21 1/3 H 61 1/2 in

Floor lamp with structure in iron and brass with Brushed Dark Bronze or Gold finishing. Shade in shantung silk col. Silver or Ivory.

**KIOGA** (page 118, 122, 177-179, 231)



**C.KIO.611.AMX**  
Ø 7 H 60 cm  
Ø 2 3/4 H 23 1/2 in

**C.KIO.611.BMX**  
Ø 7 H 40 cm  
Ø 2 3/4 H 15 3/4 in

Chandelier made with a laser-cut brass pole. Illumination with E14 LED bulb.

**LIPARI** (page 163, 167, 185)



**C.LIP.611.AMX**  
Ø 55 H 160 cm  
Ø 21 2/3 H 63 in

Chandelier with structure in metal with Gold finishing. Decorative elements in printed Murano glass.

**LOGIPI** (page 212, 214, 221-223, 237, 248)



**C.LGI.631.AMX**  
Ø 25 H 60 cm  
Ø 10 H 23 1/2 in

Table lamp with structure in laser-cut brass. Opaline plexiglass and 24 W LED strip.

**LOGIPI** (page 42, 48, 53, 82, 84, 213b)



**C.LGI.621.AMX**  
Ø 50 H 200 cm  
Ø 19 2/3 H 78 1/4 in

Floor lamp with structure in aluminum with Gold finishing. Shade in silk col. Ivory. Interior with opaline plexiglass and 24 W strip LED.

**MAUI** (page 168, 172)



**C.MAU.641.AMX**  
L 50 H 50 cm  
L 19 2/3 H 19 2/3 in

Wall lamp with structure in hammered brass tubing with Gold finishing. Decorative brass leaves with Gold finishing.

**MAYA** (page 17, 21)



**C.MAY.641.AMX**  
L 58 H 36 cm  
L 22 1/4 H 14 in

Wall lamp with structure in hammered brass rod with Gold finishing. Decorative brass leaves with Gold finishing.

## SIORAF (page 29)



**C.SIO.611.AMX**  
Ø 100 H 100 cm  
Ø 39 1/2 H 39 1/2 in

Chandelier with structure in cast brass with Dark Bronze finishing. Steel suspension cable and metal chain with Dark Bronze finishing. Internal lampshade col. Ivory.

## SIORAF (page 127-128, 190-191, 193, 196, 198)



**C.SIO.611.BMX**  
Ø 20 H 47 cm  
Ø 8 H 18 1/2 in

Chandelier with structure in cast brass with Gold finishing. Steel suspension cable and metal chain with Gold finishing. Internal lampshade col. Ivory.

## SIORAF.3 (page 154, 156, 159)



**C.SI3.631.AMX**  
Ø 50 H 85 cm  
Ø 19 2/3 H 33 1/2 in

Table lamp with structure in cast brass with Brushed Dark Bronze finishing. Shade in fabric col. Ivory.

## SIORAF.3 (page 74, 78, 90, 92, 95)



**C.SI3.621.AMX**  
Ø 70 H 220 cm  
Ø 27 1/3 H 86 2/3 in

Floor lamp with structure in cast brass with Brushed Dark Bronze finishing. Shade in fabric col. Ivory.

## WILD (page 220, 222, 224)



**C.WIL.631.BM1**  
Ø 37 H 73 cm  
Ø 14 1/2 H 28 3/4 in

Table lamp with cone-shaped lampshade in fabric cat. A Velvet RC Wild Jaguar col. Natural. Structure in polyurethane resin with Antique Bronze finishing, attached to a base in metal with Gold finishing.

## MIRRORS

### KELBIA (page 100, 102, 104-105, 129, 230)



**C.KEL.512.ANX**  
L 120 D 5 H 240 cm  
L 47 1/4 D 2 H 94 1/2 in

Standing mirror with structure in MDF, covered on the front with a metal sheet with Brushed Dark Bronze finishing and with decorative elements in leather cat. A Sauvage col. Tenebra with "Waddi" quilting, leather cat. B Cocco col. 5 and fabric cat. A Velvet RC Wild Jaguar col. Natural. Natural mirror.

### SAHARA (page 204, 208-209)



**C.SAH.512.AMX**  
L 160 D 8 H 240 cm  
L 63 D 3 H 94 1/2 in

Standing mirror with structure in MDF. Metal frame with Brushed Dark Bronze finishing. Bevelled bronzed mirror.

### SAHARA (page 169-170, 173)



**C.SAH.511.EMX**  
Ø 100 D 6 cm  
Ø 39 1/2 D 2 1/3 in

Mirror with structure in MDF. Metal frame with Gold finishing. Bevelled bronzed mirror.

### TRINIDAD (page 6, 62, 71, 248, 252)



**C.TRI.511.BMX**  
L 120 D 5 H 90 cm  
L 47 1/4 D 2 H 35 1/2 in

Mirror with structure in MDF with matt Ivory Lacquered finishing. Iron wall supports with Brushed Dark Bronze finishing. Natural mirror.



## WITCH (page 176, 180-181, 196, 201)



**C.WIT.511.AMX**  
Ø 120 H 12 cm  
Ø 47 1/4 H 4 2/3 in

Convex mirror with frame in metal sheet with Antique Bronze finishing.

## COMPLEMENTS

### WILD (page 255-257)



**C.WIL.251.AG1**  
Ø 115 H 195 cm  
Ø 45 1/4 H 76 3/4 in

Suspended seat in fabric cat. A Canvas RC Flag col. Natural and seat padded in high density expansive polyurethane foam, upholstered in fabric cat. A Canvas RC Wild Tiger col. Natural. Cords in polyamide fibres. Reinforcement band connecting the ropes to the body of the chair in leather col. Black with contrasting stitching in col. Beige. Metallic support element in iron covered in leather col. Black and decorative tip elements in zama alloy with polished galvanic gold finishing. Available also with supporting base in iron with Brushed Bronze finishing, for self-standing use.

### WILD DOG BED - SQUARE (page 258-259)



**C.WIL.371.AG1**  
L 95 D 65 H 31 cm  
L 37 1/3 D 25 2/3 H 12 1/4 in

Dog bed with structure in multilayer poplar wood and polyurethane foam. Frame in iron rod with Gold finishing. External upholstery in ecoleather colour Black. Internal cushion with removable cover in fabric Canvas RC Wild Tiger col. Natural.

### WILD DOG BED - OVAL (page 260-261)



**C.WIL.371.AG2**  
L 94 D 63 H 25 cm  
L 37 D 24 1/4 H 10 in

Dog bed with structure in multilayer poplar wood and polyurethane foam. Upholstery in ecoleather colour Black. Internal cushion with removable cover in fabric Canvas RC Wild Tiger col. Natural. Metal details in Gold finishing.

## CARPETS / RUGS

### AUDREY (page 82-87)



**C.AUD.571.AMX**  
Ø 420 cm  
Ø 265 1/3 in

Jaguar printed carpet with nylon edging.

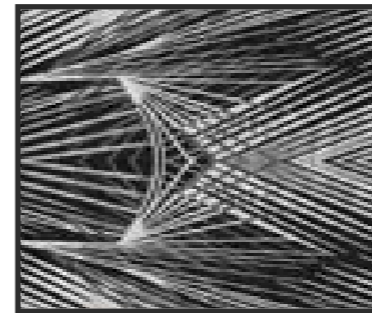
### AUDREY (page 190-193)



**C.AUD.571.AMX**  
L 300 D 300 cm  
L 197 D 197 in

Jaguar printed carpet with nylon edging.

### CHARLIZE (page 28-35, 42-53, 212-213)



**C.CHA.571.BMX**  
L 600 D 500 cm  
L 236 1/4 D 197 in

Hand-tufted rug in wool and bamboo silk relief.

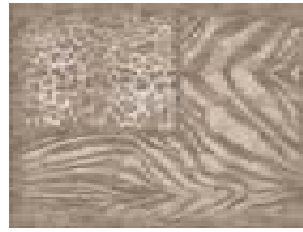
### FLAG RUG (page 100-111, 126-129, 132-133)



**C.FLA.571.BAD-D4X3**  
L 400 D 300 cm  
L 236 1/4 D 197 in

Hand-tufted rug in wool and silk. Natural-Black colour.

**FLAG RUG** (page 10-13, 16-25, 168-172)



Hand-tufted rug in wool and silk. Sand-Beige colour.

**C.FLA.571.BDD-D4X3**  
L 400 D 300 cm  
L 236 1/4 D 197 in

**TIGER RUG** (page 90-93, 96-97, 112-115, 118-119, 121-123, 220-221, 223, 230-231, 233-234, 237)



Hand-tufted rug in wool and silk. Natural-Black colour.

**C.TIR.571.BAD-D4X3**  
L 400 D 300 cm  
L 236 1/4 D 197 in

**UMA** (page 136-138, 141)



Hand-tufted rug in wool and bamboo silk relief. White-Beige colour.

**C.UMA.571.BMX**  
Ø 420 cm  
Ø 265 1/3 in

**UMA** (page 38-39, 56-59, 62-69, 74-79, 144-149, 153-157, 196-199)



Hand-tufted rug in wool and bamboo silk relief. White-Beige colour.

**C.UMA.571.BMX**  
L 600 D 500 cm  
L 236 1/4 D 197 in

DECORATIVE ITEMS

**UNITED STATES OF CAVALLI** (page 11)



Decorative artwork in printed silk with "United States of Cavalli" design col. Beige. Frame in brass with Gold finishing.

**C.USC.592.BMX**  
L 199 D 2 H 129 cm  
L 78 1/3 D 2/3 H 50 3/4 in

**UNITED STATES OF CAVALLI** (page 16, 90-91, 95, 259)



Decorative artwork in printed silk with "United States of Cavalli" design col. Natural. Frame in brass with Gold finishing.

**C.USC.592.AMX**  
L 199 D 2 H 129 cm  
L 78 1/3 D 2/3 H 50 3/4 in

**ARTWORKS** (page 82, 84, 144, 146, 212, 214-215, 237)



**C.ART.592.D**  
L 100 H 100 cm  
L 39 1/2 H 39 1/2 in



**C.ART.592.F**  
L 100 H 100 cm  
L 39 1/2 H 39 1/2 in



**C.ART.592.G**  
L 100 H 100 cm  
L 39 1/2 H 39 1/2 in

Decorative artwork in printed fabric. Frame with Black Lacquered and Antique Bronze finishing.

**ARTWORKS** (page 74, 131, 154, 158, 162)



**C.SIL.592.A**  
L 163 H 200 cm  
L 39 1/2 H 78 2/3 in



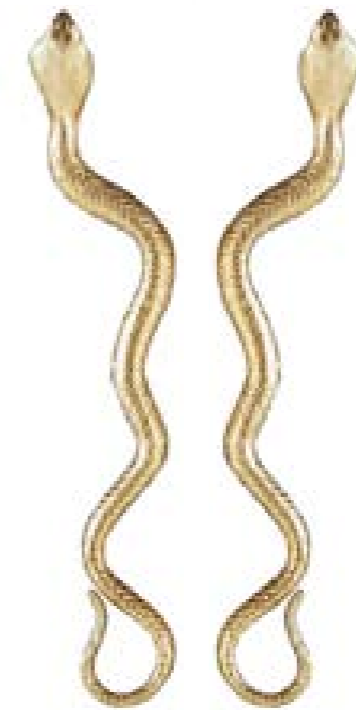
**C.SIL.592.B**  
L 163 H 163 cm  
L 39 1/2 H 39 1/2 in

Oil painting, decoration in golden leaf. Black wooden frame.

JEWEL  
HANDLES



"JEWEL HANDLES" IN MELTED BRASS AVAILABLE IN POLISHED GOLD OR POLISHED PLATINUM AND WITH SWAROVSKI CRYSTALS.





Stylist **Maria Trezzi, Alberto Stecca**  
Photographs **Azimak Photo**

Pre-press **Monogramma, Cantù**  
Printed in Italy by **Grafica Gioia, Cantù**  
09.2022 © Copyright by **ONIRO Group s.r.l.**

This catalogue is property of ONIRO Group and cannot be sold. You may not reproduce any part of this catalogue without written authorization of the publisher. There are no licenses, either implied or expressed, to reproduce any part of this catalogue unless the license is in writing and signed by ONIRO Group. Copyright Laws protect the content of this catalogue, including the photographs and furniture design.

Pictures have an indicative value. The dimensions are approximate (with a tolerance of +/- 2%) and subject to change. The company preserves the right to change the technical features of the products shown in this catalogue without notice as a result of technical updates.

# roberto cavalli

HOME

INTERIORS

[robertocavallihomeinteriors.onirogroup.it](http://robertocavallihomeinteriors.onirogroup.it)

ONIRO GROUP

Via Montesolaro 14/B | 22063 Cantù (Co) Italy  
T. +39 031 70757 | F. +39 031 711540  
[info@onirogroup.it](mailto:info@onirogroup.it) | [www.onirogroup.it](http://www.onirogroup.it)